



REPORT ON THE *TSODILIO RESOURCES LIMITED / BOSOTO (PTY) LTD - LDD SAMPLES*

**THIS REPORT INCLUDES VALUATIONS, BREAKAGE RESULTS AND
DIAMOND CHARACTERISTICS OF THE 2018 LDD SAMPLES**

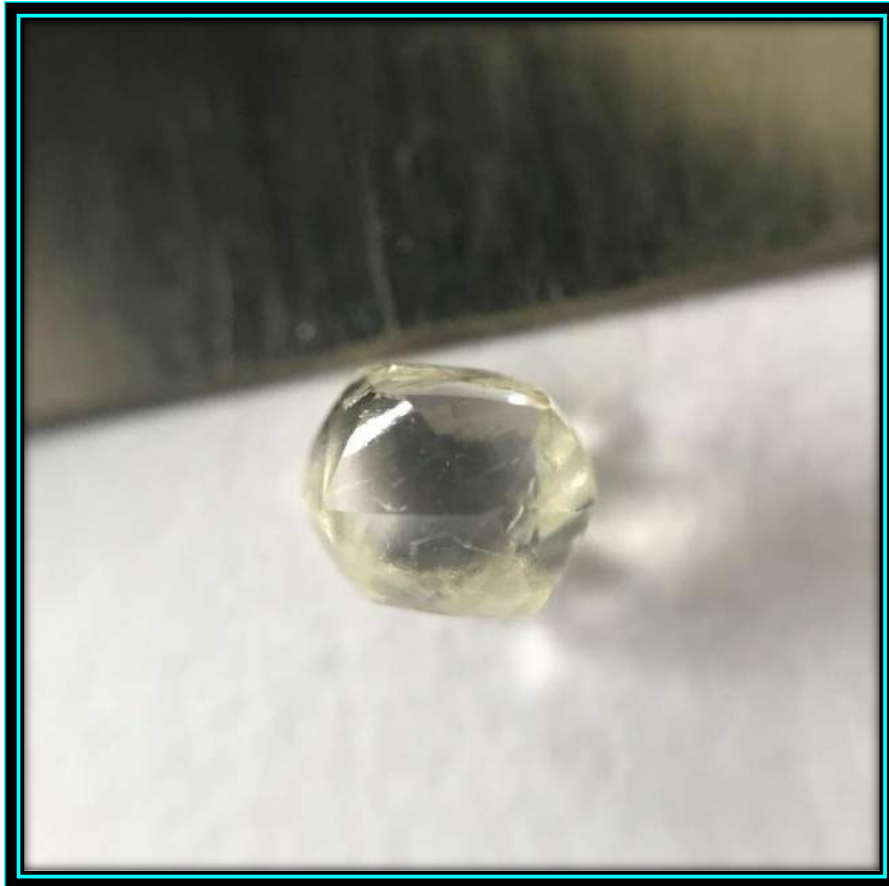


IMAGE 1: 1.41 CARAT ROUNDED J COLOUR DODECAHEDRON - S101

RD FERRARIS – 20 DECEMBER 2018

This Document is confidential and legally privileged. It is intended for the Directors and senior Managers of *Tsodilo Resources*. If you are not an intended recipient and/or have received this Document in error, please notify the sender immediately and permanently delete the original and any copies thereof. Any disclosure, distribution, copying or other use of this Document is strictly prohibited and may be illegal.

CONTENTS

- 1 INTRODUCTION**
- 2 SAMPLE DETAIL**
- 3 VALUATION PER SAMPLE**
- 4 DIAMOND BREAKAGE AND IMPACT**
- 5 DIAMOND CHARACTERISTICS AND TYPE IIa**
- 6 TAILINGS SAMPLE**
- 7 HISTORICAL SAMPLE**
- 8 SUMMARY**

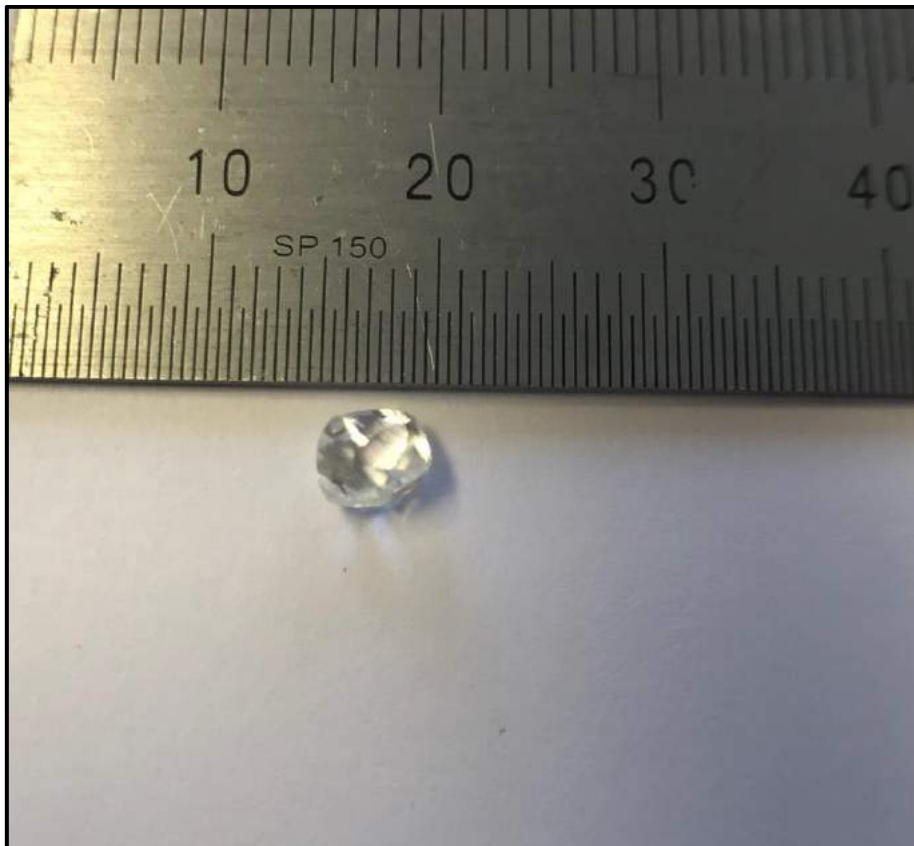


IMAGE 2: A 0.70 CT WHITE DODEC FROM LDD033V (S21) SAMPLE

1 INTRODUCTION

Two visits were made to Gaborone to conduct Breakage, Valuation and Diamond Characteristic studies on the Tsodilo LDD Programme. The author and Dr Mike De Wit visited the *Hennig* offices on the 18th and 19th June 2018 to for first the 9 LDD samples (84 packets).

During the second visit; the author and Dr P Lawless visited the *Hennig* offices with Dr Alistair Jeffcoate to complete the second batch of LDD samples. As per the first visit; all the diamonds had been deep-boiled, weighed individually and measured on the *Yehuda* Colour Machine.

During the second visit on the 21st and 22nd October 2018; Dr Lawless evaluated the first batch of LDD samples to confirm the original findings of the author.

Each LDD sample was evaluated separately, packet by packet in the following sequence:

- ❖ Sub-sample packet opened to confirm count and weight
- ❖ The stone/s were then sieved
- ❖ The individual weights were then recorded per sieve class
- ❖ Each stone was then valued separately
- ❖ Then assessed for Breakage and Impact damage with microscopes
- ❖ All the detail per LDD number and sub-sample number was recorded
- ❖ All interesting stones and levels of Breakage/damage were discussed with Drs De Wit, Lawless and Jeffcoate
- ❖ All LDD sample stones were studied for breakage by the author and Dr Lawless

Special note of thanks to Dr Jeffcoate for his invaluable help with the development of the Tsodilo template used to create the majority of the tables in this report.

2 SAMPLE DETAIL

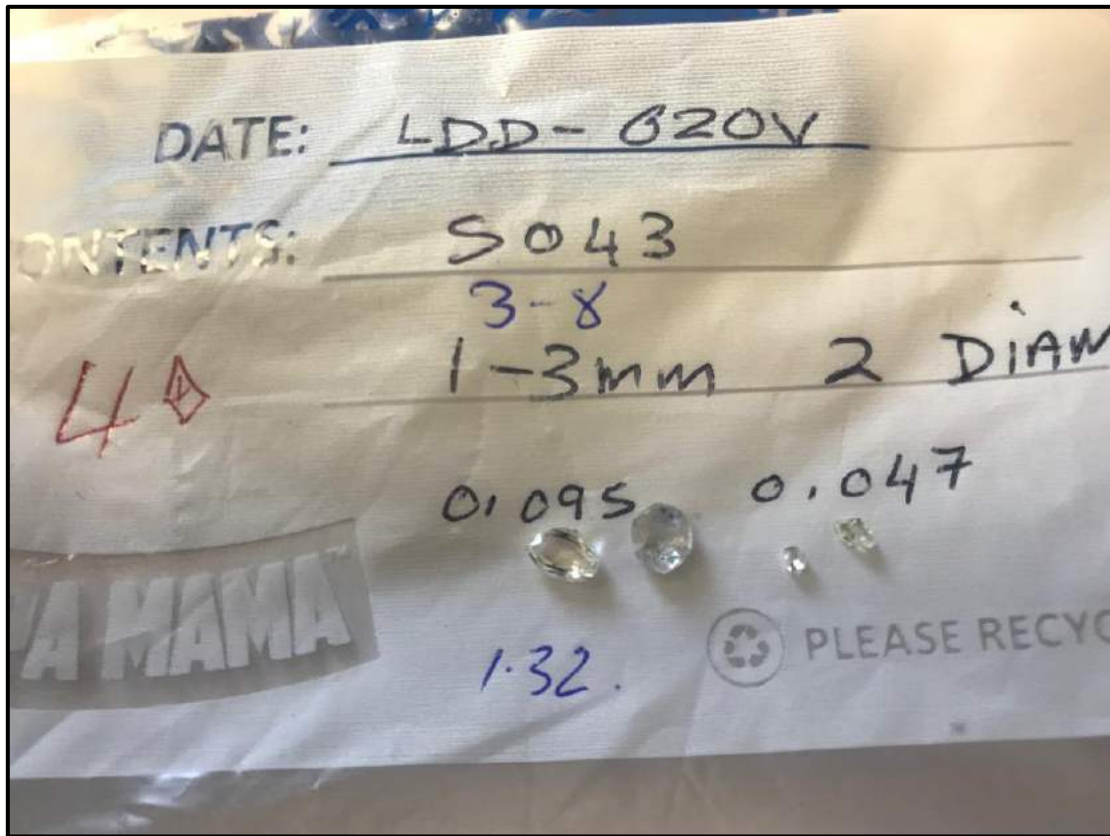


IMAGE 3: THE LDD 020V SAMPLE – S043 SAMPLE



IMAGE 4: A 1.38 CT WHITE DODEC FROM LDD033V – S024 SAMPLE

TSODILO RESOURCES LDD SAMPLES REPORT – DECEMBER 2018

2.1 SAMPLE DETAIL – LDD 018V

Dispatch	Hole ID	Sample	Material Type	Size	Stones	Carats	Sieve Size	Sale Size	Price Point	\$ Per Carat	Total \$	RDF Breakage Category	PJL Breakage Category	Comments	Colour	Blue UV
1	LDD_018V	S080	VK2	1-3mm	1	0,060	+5	+5	Dark	\$ 10,00	\$ 0,60	Unbroken	CH	Brown	Brown	
2	LDD_018V	S074	VK2	1-3mm	1	0,025	+3	+3	Light	\$ 15,00	\$ 0,38	Unbroken	CH	Light Brown	F+	Faint 002
2	LDD_018V	S074	VK2	1-3mm	1	0,015	+3	+3	Light	\$ 15,00	\$ 0,23	Lightly Broken	1	Stays +3	White	
2	LDD_018V	S076	VK2	1-3mm	1	0,030	+3	+3	Light	\$ 15,00	\$ 0,45	Unbroken	0		White	
2	LDD_018V	S076	VK2	1-3mm	1	0,030	+1	+1	Light	\$ 10,00	\$ 0,30	Unbroken	0		White	
2	LDD_018V	S077	VK2	1-3mm	1	0,135	+9	+9	Mb Gem High	\$ 160,00	\$ 21,60	Lightly Broken	2	G+ Colour - stays +9	H	Faint 001
2	LDD_018V	S077	VK2	1-3mm	1	0,025	+3	+3	Light	\$ 15,00	\$ 0,38	Unbroken	0		White	
2	LDD_018V	S079	VK2	1-3mm	1	0,220	+9	+9	Brown Clivage	\$ 20,00	\$ 4,40	Chipped	1	Light Brown	DE	Faint 001
2	LDD_018V	S081	VK2	1-3mm	1	0,115	+7	+7	Clivage	\$ 40,00	\$ 4,60	Unbroken	CH		H-	Light 002
2	LDD_018V	S081	VK2	1-3mm	1	0,070	+5	+5	Light	\$ 15,00	\$ 1,05	Lightly Broken	2	Could have been +7	H+	Light 003
2	LDD_018V	S082	VK2	3-8mm	1	1,580	+15	6 Grainer	Clivage Low	\$ 175,00	\$ 276,50	Unbroken	0	Weakest of the Large	D	Light 002
2	LDD_018V	S084	VK2	1-3mm	1	0,070	+5	+5	Light	\$ 15,00	\$ 1,05	Heavily Broken	0	Could have been +7	White	
2	LDD_018V	S084	VK2	1-3mm	1	0,040	+5	+5	Light	\$ 15,00	\$ 0,60	Unbroken	2		ww	
2	LDD_018V	S084	VK2	1-3mm	1	0,030	+3	+3	Light	\$ 10,00	\$ 0,30	Unbroken	CH		w	
2	LDD_018V	S085	VK2	3-8mm	1	0,720	+11	3 Grainer	Clivage White	\$ 130,00	\$ 93,60	Unbroken	0		E	Light 002
2	LDD_018V	S086	VK2	1-3mm	1	0,020	+3	+3	Light	\$ 15,00	\$ 0,30	Heavily Broken	0	Could have been +5	w	
2	LDD_018V	S087+S088	VK2	1-3mm	1	0,180	+9	+9	Rejection	\$ 10,00	\$ 1,80	Unbroken	1		H-	Light 002
2	LDD_018V	S087+S088	VK2	1-3mm	1	0,105	+7	+7	Clivage	\$ 40,00	\$ 4,20	Unbroken	0	mantle inclusion	DE	None 000
2	LDD_018V	S087+S088	VK2	1-3mm	1	0,075	+5	+5	Light	\$ 15,00	\$ 1,13	Unbroken	0		F	Faint 001
2	LDD_018V	S090	VK2	1-3mm	1	0,215	+9	+9	Black Z	\$ 115,00	\$ 24,73	Unbroken	0		E	Faint 001
2	LDD_018V	S090	VK2	1-3mm	1	0,120	+7	+7	Clivage	\$ 40,00	\$ 4,80	Unbroken	0		F+	None 000
2	LDD_018V	S090	VK2	1-3mm	1	0,030	+3	+3	Light	\$ 10,00	\$ 0,30	Unbroken	0		H-	Light 002
3	LDD_018V	S087+S088_R	VK2	1-3mm	1	0,060	+5	+5	Dark	\$ 12,00	\$ 0,72	Chipped	1		Grey	
3	LDD_018V	S093+S094	VK2	1-3mm	1	0,025	+3	+3	Light	\$ 55,00	\$ 1,38	Light Break	1		w	
3	LDD_018V	S093+S094	VK2	1-3mm	1	0,020	+5	+5	Light	\$ 65,00	\$ 1,30	Light break	2		w	
3	LDD_018V	S095+S096	VK2	1-3mm	1	0,115	+7	+7	Clivage	\$ 40,00	\$ 4,60	Chipped	1		H-	Light 003
3	LDD_018V	S095+S096	VK2	1-3mm	1	0,095	+5	+5	Light	\$ 65,00	\$ 6,18	Chipped Impact	1		H-	Light 002
					Stones	Carats				\$ per carat	Total \$					
					27	4,225				\$ 108,27	\$ 457,45					

TABLE 1: SAMPLE DETAIL FOR LDD_018V

TSODILO RESOURCES LDD SAMPLES REPORT – DECEMBER 2018

2.2A SAMPLE DETAIL – LDD 019V

Dispatch	Hole ID	Sample	Material Type	Size	Stones	Carats	Sieve Size	Sale Size	Price Point	\$ Per Carat	Total \$	RDF Breakage Category	PJL Breakage Category	Comments	Colour	Blue UV
2	LDD_019V	S136	VK3	1-3mm	1	0,080	+7	+7	Clivage	\$ 40,00	\$ 3,20	Chipped	CH		I-	Light 003
2	LDD_019V	S136	VK3	1-3mm	1	0,035	+5	+5	Light	\$ 20,00	\$ 0,70	Chipped	CH	Top Light Brown	D	Medium 010
3	LDD_019V	S121	VK3	1-3mm	1	0,075	+5	+5	Light	\$ 65,00	\$ 4,88	Chipped	CH		White	
3	LDD_019V	S121	VK3	1-3mm	1	0,030	+3	+3	Light	\$ 55,00	\$ 1,65	Chipped	CH		White	
3	LDD_019V	S122	VK3	3-8mm	1	0,680	+13	3 Grainer	Clivage High 2	\$ 108,00	\$ 73,44	Unbroken	CH	Twinned	H	Light 003
3	LDD_019V	S122	VK3	1-3mm	1	0,045	+5	+5	Light	\$ 65,00	\$ 2,93	Unbroken	CH	Has lost 2 fragments post boil, in bag	White	
3	LDD_019V	S122	VK3	1-3mm	1	0,040	+5	+5	Light	\$ 65,00	\$ 2,60	Lighly Broken	CH		White	
3	LDD_019V	S123	VK3	1-3mm	1	0,360	+11	+11	Mb Spot	\$ 95,00	\$ 34,20	Unbroken	0	Maccle	F+	Light 002
3	LDD_019V	S123	VK3	1-3mm	1	0,145	+7	+7	Gem Z High	\$ 160,00	\$ 23,20	Unbroken	0	Top Stone Dodec	H	Light 002
3	LDD_019V	S123	VK3	1-3mm	1	0,040	+5	+5	Light	\$ 65,00	\$ 2,60	Unbroken	0		White	
3	LDD_019V	S124	VK3	1-3mm	1	0,200	+9	+9	Mb Spot	\$ 70,00	\$ 14,00	Unbroken	0		I+	Light 003
3	LDD_019V	S124	VK3	1-3mm	1	0,180	+9	+9	Clivage Low	\$ 40,00	\$ 7,20	Unbroken	0		K+	Light 003
3	LDD_019V	S125	VK3	1-3mm	1	0,025	+5	+5	Light	\$ 65,00	\$ 1,63	Unbroken	0		White	
3	LDD_019V	S126	VK3	1-3mm	1	0,200	+9	+9	Clivage	\$ 60,00	\$ 12,00	Unbroken	0		DE	None 000
3	LDD_019V	S126	VK3	1-3mm	1	0,080	+5	+5	Light	\$ 65,00	\$ 5,20	Unbroken	0		White	
3	LDD_019V	S127	VK3	3-8mm	1	0,455	+12	+11	Mb Gem 2	\$ 180,00	\$ 81,90	Unbroken	0	Beautiful Flat Maccle	H-	Light 003
3	LDD_019V	S127	VK3	1-3mm	1	0,055	+5	+5	Light	\$ 65,00	\$ 3,58	Unbroken	0		White	
3	LDD_019V	S128	VK3	1-3mm	1	0,175	+9	+9	Mb Gem 2	\$ 128,00	\$ 22,40	Unbroken	0	Maccle	G-	Faint 001
3	LDD_019V	S130	VK3	3-8mm	1	0,400	+11	+11	Mb Spot	\$ 160,00	\$ 64,00	Unbroken	CH		G	Light 002
3	LDD_019V	S130	VK3	1-3mm	1	0,235	+9	+9	Clivage	\$ 60,00	\$ 14,10	Unbroken	0		White	
3	LDD_019V	S130	VK3	1-3mm	1	0,115	+9	+9	Clivage Flats	\$ 45,00	\$ 5,18	Chipped	CH		White	
3	LDD_019V	S130	VK3	1-3mm	1	0,105	+7	+7	Clivage	\$ 40,00	\$ 4,20	Unbroken	0		H	Faint 001
3	LDD_019V	S131	VK3	1-3mm	1	0,145	+9	+9	Clivage	\$ 60,00	\$ 8,70	Unbroken	0		H	Faint 001
3	LDD_019V	S133	VK3	1-3mm	1	0,275	+9	+9	Clivage	\$ 60,00	\$ 16,50	Unbroken	0		H	Light 002
3	LDD_019V	S133	VK3	1-3mm	1	0,155	+9	+9	Mb Gem High	\$ 160,00	\$ 24,80	Unbroken	0		DE	Faint 001

TABLE 2: SAMPLE DETAIL FOR LDD_019V (PART A)

TSODILO RESOURCES LDD SAMPLES REPORT – DECEMBER 2018

2.2B SAMPLE DETAIL – LDD 019V

Dispatch	Hole ID	Sample	Material Type	Size	Stones	Carats	Sieve Size	Sale Size	Price Point	\$ Per Carat	Total \$	RDF Breakage Category	PJL Breakage Category	Comments	Colour	Blue UV
3	LDD_019V	S134	VK3	1-3mm	1	0,105	+9	+9	Mb Gem	\$ 160,00	\$ 16,80	Unbroken	0	The other stone in this sample at 0.06 carats is not a diamond and was removed	D	None 000
3	LDD_019V	S135	VK3	3-8mm	1	1,360	+15	5 Grainer	Clivage High	\$ 255,00	\$ 346,80	Unroken	CH	White dodec resorbed ruts	H	Light 002
3	LDD_019V	S135	VK3	1-3mm	1	0,050	+5	+5	Mb Gem High Light	\$ 65,00	\$ 3,25	Unbroken	0	Octahedral thick macle	White	
3	LDD_019V	S137	VK3	1-3mm	1	0,085	+5	+5	Light (MB)	\$ 65,00	\$ 5,53	Unbroken	0	Type IIa	D	None 000
3	LDD_019V	S138	VK3	3-8mm	1	0,345	+11	+11	Rejection	\$ 12,00	\$ 4,14	Chipped	1	White Shattered Rej	F	Light 005
3	LDD_019V	S141	VK3	1-3mm	1	0,330	+11	+11	Spotted Clivage	\$ 55,00	\$ 18,15	Unbroken	0	Grey Spotted	D	Faint 001
3	LDD_019V	S141	VK3	1-3mm	1	0,180	+9	+9	Gem Mb High	\$ 160,00	\$ 28,80	Unbroken	0	Macle	H	Light 003
3	LDD_019V	S141	VK3	1-3mm	1	0,035	+3	+3	Light	\$ 55,00	\$ 1,93	Unbroken	CH		G	Light 004
3	LDD_019V	S142-S143	VK3	3-8mm	1	0,920	+13	4 Grainer	Coloured Gem 2 Spot	\$ 245,00	\$ 225,40	Unbroken	0	Yellow dodec	K	Light 002
3	LDD_019V	S142-S143	VK3	1-3mm	1	0,125	+9	+9	Clivage	\$ 60,00	\$ 7,50	Chipped	2		H-	Light 002
3	LDD_019V	S142-S143	VK3	1-3mm	1	0,065	+5	+5	Light	\$ 65,00	\$ 4,23	Chipped Imp.	CH		White	
3	LDD_019V	S142-S143	VK3	1-3mm	1	0,065	+5	+5	Light	\$ 65,00	\$ 4,23	Chipped Imp.	CH		White	
3	LDD_019V	S144	VK3	3-8mm	1	0,755	+13	3 Grainer	MB White 2	\$ 308,00	\$ 232,54	Unbroken	0	H+ Colour, dodec macle,	H	Light 002
3	LDD_019V	S144	VK3	1-3mm	1	0,040	+5	+5	Light (MB)	\$ 65,00	\$ 2,60	Chippedped	CH	Type IIa	D	None 000
3	LDD_019V	S149	VK3	1-3mm	1	0,185	+9	+9	Mb Gem High	\$ 160,00	\$ 29,60	Unbroken	0		DE	Faint 001
3	LDD_019V	S149	VK3	1-3mm	1	0,175	+9	+9	Coloured Mb High	\$ 80,00	\$ 14,00	Unbroken	0		K	Faint 001
					Stones	Carats					\$ per carat	Total \$				
					41	9,150					\$ 150,85	\$ 1 380,25				

TABLE 3: SAMPLE DETAIL FOR LDD_019V (PART B)

TSODILO RESOURCES LDD SAMPLES REPORT – DECEMBER 2018

2.3A SAMPLE DETAIL – LDD 020V

Dispatch	Hole ID	Sample	Material Type	Size	Stones	Carats	Sieve Size	Sale Size	Price Point	\$ Per Carat	Total \$	RDF Breakage Category	PJL Breakage Category	Comments	Colour	Blue UV
1	LDD_020V	S037	VK3	1-3mm	1	0,125	+7	+7	Clivage White	\$ 40,00	\$ 5,00	Unbroken	0		H	Faint 001
1	LDD_020V	S037	VK3	3-8mm	1	0,035	+3	+3	Light	\$ 15,00	\$ 0,53	Unbroken	CH		White	
1	LDD_020V	S038	VK3	3-8mm	1	0,425	+11	+11	Clivage White	\$ 85,00	\$ 36,13	Lightly Broken	CH	Stays +11 after breaking	I+	Light 002
1	LDD_020V	S038	VK3	1-3mm	1	0,140	+7	+7	Z Spot	\$ 135,00	\$ 18,90	Unbroken	0		H+	None 000
1	LDD_020V	S038	VK3	1-3mm	1	0,015	+1	+1	Light	\$ 10,00	\$ 0,15	Unbroken	1		White	
1	LDD_020V	S039	VK3	1-3mm	1	0,050	+5	+5	Light	\$ 20,00	\$ 1,00	Unbroken	1		White	
1	LDD_020V	S040	VK3	3-8mm	1	0,200	+9	+9	Clivage	\$ 60,00	\$ 12,00	Unbroken	0		D	Faint 001
1	LDD_020V	S040	VK3	1-3mm	1	0,140	+9	+9	Gem Mb	\$ 160,00	\$ 22,40	Heavily Broken	1	Could have been +11	J	Light 003
1	LDD_020V	S040	VK3	1-3mm	1	0,080	+5	+5	Gem Mb	\$ 95,00	\$ 7,60	Unbroken	0		H-	Faint 001
1	LDD_020V	S040	VK3	1-3mm	1	0,045	+3	+3	Light	\$ 15,00	\$ 0,68	Unbroken	0		White	
1	LDD_020V	S040	VK3	1-3mm	1	0,015	+1	+1	Dark	\$ 5,00	\$ 0,08	Unbroken	2		Grey	
1	LDD_020V	S041	VK3	1-3mm	1	0,035	+3	+3	Light	\$ 15,00	\$ 0,53	Chipped	1		White	
1	LDD_020V	S041	VK3	1-3mm	1	0,015	+1	+1	Light	\$ 10,00	\$ 0,15	Unbroken	CH		White	
1	LDD_020V	S042	VK3	1-3mm	1	0,050	+5	+5	Gem Mb	\$ 95,00	\$ 4,75	Chipped	0		White	
1	LDD_020V	S043	VK3	3-8mm	1	0,685	+12	3 Grainer	Clivage High	\$ 130,00	\$ 89,05	Unbroken	0		E	Faint 001
1	LDD_020V	S043	VK3	3-8mm	1	0,510	+11	+11	Gem Mb	\$ 230,00	\$ 117,30	Unbroken	0		H-	Faint 001
1	LDD_020V	S043	VK3	1-3mm	1	0,095	+7	+7	Gem Mb	\$ 95,00	\$ 9,03	Unbroken	0		J	Light 002
1	LDD_020V	S043	VK3	1-3mm	1	0,050	+3	+3	Gem Mb	\$ 80,00	\$ 4,00	Unbroken	0		White	
1	LDD_020V	S044	VK3	3-8mm	1	0,955	+13	4 Grainer	Clivage High	\$ 220,00	\$ 210,10	Unbroken	0	Twinne Stone	DE	Faint 001
1	LDD_020V	S055	VK3	3-8mm	1	0,550	+12	+11	Rejection	\$ 12,00	\$ 6,60	Chipped	CH	Stays +11; Type IIa	D	Faint 001
1	LDD_020V	S055	VK3	3-8mm	1	0,410	+11	+11	Clivage White	\$ 85,00	\$ 34,85	Chipped	2	Stays +11; Type IIa	D	Faint 001
1	LDD_020V	S055	VK3	3-8mm	1	0,255	+11	+11	Clivage White	\$ 85,00	\$ 21,68	Chipped	CH	Stays +11	G+	Faint 001
2	LDD_020V	S044	VK3	1-3mm	1	0,245	+9	+9	Clivage	\$ 60,00	\$ 14,70	Unbroken	0		J+	Light 005
2	LDD_020V	S044	VK3	1-3mm	1	0,025	+3	+3	Light	\$ 15,00	\$ 0,38	Fragment	4	Off larger stone	White	
2	LDD_020V	S046	VK3	1-3mm	1	0,050	+5	+5	Light	\$ 20,00	\$ 1,00	Lightly Broken	0		White	
2	LDD_020V	S048	VK3	1-3mm	1	0,030	+3	+3	Light	\$ 15,00	\$ 0,45	Unbroken	0		White	
2	LDD_020V	S048	VK3	1-3mm	1	0,030	+3	+3	Light	\$ 15,00	\$ 0,45	Unbroken	0		White	

TABLE 4: SAMPLE DETAIL FOR LDD_020V (PART A)

TSODILO RESOURCES LDD SAMPLES REPORT – DECEMBER 2018

2.3B SAMPLE DETAIL – LDD 020V

Dispatch	Hole ID	Sample	Material Type	Size	Stones	Carats	Sieve Size	Sale Size	Price Point	\$ Per Carat	Total \$	RDF Breakage Category	PJL Breakage Category	Comments	Colour	Blue UV
2	LDD_020V	S048	VK3	1-3mm	1	0,020	+3	+3	Dark	\$ 8,00	\$ 0,16	Unbroken	0		Grey	
2	LDD_020V	S049	VK3	1-3mm	1	0,150	+9	+9	Gem Mb	\$ 160,00	\$ 24,00	Unbroken	0		H+	Light 002
2	LDD_020V	S049	VK3	1-3mm	1	0,010	+1	+1	Light	\$ 10,00	\$ 0,10	Chipped	0		White	
2	LDD_020V	S050	VK3	1-3mm	1	0,065	+7	+7	Gem Mb	\$ 115,00	\$ 7,48	Unbroken	0	Type Ila	D	None 000
2	LDD_020V	S050	VK3	1-3mm	1	0,055	+5	+5	Gem Mb	\$ 95,00	\$ 5,23	Unbroken	0		H-	Faint 001
2	LDD_020V	S051	VK3	1-3mm	1	0,170	+7	+7	Gem Z	\$ 160,00	\$ 27,20	Unbroken	0		H+	Faint 001
2	LDD_020V	S051	VK3	1-3mm	1	0,040	+5	+5	Light	\$ 20,00	\$ 0,80	Unbroken	1		White	
2	LDD_020V	S051	VK3	1-3mm	1	0,030	+3	+3	Dark		\$ -	Unbroken	1		Grey	
2	LDD_020V	S052	VK3	1-3mm	1	0,170	+7	+7	Mb	\$ 74,00	\$ 12,58	Chipped	0	Heavy Impact	J-	Light 002
2	LDD_020V	S052	VK3	1-3mm	1	0,150	+7	+7	Gem Mb	\$ 115,00	\$ 17,25	Unbroken	1		H-	Light 003
2	LDD_020V	S052	VK3	1-3mm	1	0,120	+7	+7	Clivage White	\$ 40,00	\$ 4,80	Lightly Broken	4	Stays +7 after breaking	DE	None 000
2	LDD_020V	S052	VK3	1-3mm	1	0,080	+5	+5	Light	\$ 20,00	\$ 1,60	Lightly Broken	2	Could have been +7	DE	None 000
2	LDD_020V	S052	VK3	1-3mm	1	0,050	+5	+5	Light	\$ 20,00	\$ 1,00	Unbroken	0		White	
2	LDD_020V	S052	VK3	1-3mm	1	0,025	+3	+3	Dark	\$ 8,00	\$ 0,20	Unbroken	CH		Grey	
2	LDD_020V	S053	VK3	3-8mm	1	1,535	+17	6 Grainer	Z Spot	\$ 755,00	\$ 1 158,93	Unbroken	0	Z11CRY	J-	Light 005
2	LDD_020V	S053	VK3	1-3mm	1	0,125	+9	+9	Rejection	\$ 78,00	\$ 9,75	Unbroken	0	Top Light Brown	DE	Strong 015
2	LDD_020V	S053	VK3	1-3mm	1	0,025	+3	+3	Light	\$ 10,00	\$ 0,25	Heavily Broken	CH	Could have been +5	White	
2	LDD_020V	S053	VK3	1-3mm	1	0,020	+3	+3	Light	\$ 15,00	\$ 0,30	Heavily Broken	4	Could have been +5	White	
2	LDD_020V	S053	VK3	1-3mm	1	0,020	+1	+1	Light	\$ 12,00	\$ 0,24	Heavily Broken	4	Could have been +3	White	
2	LDD_020V	S054	VK3	3-8mm	1	0,600	+11	+11	Mb Spot	\$ 185,00	\$ 111,00	Unbroken	0		G	Faint 001
2	LDD_020V	S054	VK3	1-3mm	1	0,025	+3	+3	Light	\$ 15,00	\$ 0,38	Lightly Broken	2	Could have been +5	White	
2	LDD_020V	S056	VK3	1-3mm	1	0,050	+3	+3	Gem Mb	\$ 78,00	\$ 3,90	Lightly Broken	2	Could have been +5	White	
2	LDD_020V	S056	VK3	1-3mm	1	0,025	+3	+3	Light	\$ 15,00	\$ 0,38	Lightly Broken	2	Could have been +5	White	
2	LDD_020V	S056	VK3	1-3mm	1	0,020	+1	+1	Light	\$ 10,00	\$ 0,20	Lightly Broken	2	Could have been +3	White	
2	LDD_020V	S057	VK3	3-8mm	1	0,255	+11	+11	Clivage Flats	\$ 80,00	\$ 20,40	Chipped	0	No value loss	H+	Light 002
2	LDD_020V	S057	VK3	1-3mm	1	0,035	+5	+5	Dark	\$ 12,00	\$ 0,42	Unbroken	1		Grey	
2	LDD_020V	S057	VK3	1-3mm	1	0,035	+5	+5	Dark	\$ 12,00	\$ 0,42	Unbroken	CH		Grey	
2	LDD_020V	S057	VK3	1-3mm	1	0,030	+5	+5	Light	\$ 20,00	\$ 0,60	Lightly Broken	1	Stays +5 after breakage	White	

TABLE 5: SAMPLE DETAIL FOR LDD_020V (PART B)

TSODILO RESOURCES LDD SAMPLES REPORT – DECEMBER 2018

2.3C SAMPLE DETAIL – LDD 020V

Dispatch	Hole ID	Sample	Material Type	Size	Stones	Carats	Sieve Size	Sale Size	Price Point	\$ Per Carat	Total \$	RDF Breakage Category	PJL Breakage Category	Comments	Colour	Blue UV
2	LDD_020V	S057	VK3	1-3mm	1	0,025	+3	+3	Dark	\$ 8,00	\$ 0,20	Chipped	CH	No value loss	Grey	
2	LDD_020V	S057	VK3	1-3mm	1	0,020	+3	+3	Gem Mb	\$ 78,00	\$ 1,56	Heavily Broken	2	Could have been +7	White	
2	LDD_020V	S057	VK3	1-3mm	1	0,010	+1	+1	Dark	\$ 5,00	\$ 0,05	Fragment	1	Could be off larger stone	Grey	
2	LDD_020V	S058	VK3	1-3mm	1	0,130	+5	+5	Gem Z	\$ 120,00	\$ 15,60	Unbroken	0		I+	Light 002
2	LDD_020V	S058	VK3	1-3mm	1	0,020	+1	+1	Gem	\$ 80,00	\$ 1,60	Unbroken	0		White	
2	LDD_020V	S059	VK3	1-3mm	1	0,055	+5	+5	Gem Mb	\$ 96,00	\$ 5,28	Heavily Broken	1	Could have been +9	White	
2	LDD_020V	S059	VK3	1-3mm	1	0,015	+1	+1	Light	\$ 10,00	\$ 0,15	Unbroken	CH		White	
2	LDD_020V	S060	VK3	3-8mm	1	0,805	+13	3 Grainer	Mb Gem High	\$ 348,00	\$ 280,14	Unbroken	0		J-	Light 002
2	LDD_020V	S060	VK3	3-8mm	1	0,350	+11	+11	Blk Z	\$ 125,00	\$ 43,75	Unbroken	0		K+	Light 002
2	LDD_020V	S060	VK3	1-3mm	1	0,115	+5	+5	Gem Mb	\$ 96,00	\$ 11,04	Unbroken	0		D	Faint 001
2	LDD_020V	S060	VK3	1-3mm	1	0,065	+5	+5	Dark	\$ 12,00	\$ 0,78	Lightly Broken	3	Could have been +9	D	Faint 001
2	LDD_020V	S061	VK3	1-3mm	1	0,100	+7	+7	Clivage White	\$ 40,00	\$ 4,00	Lightly Broken	1	Stays +7 after breaking	D	None 000
2	LDD_020V	S061	VK3	1-3mm	1	0,070	+5	+5	Gem Z	\$ 120,00	\$ 8,40	Unbroken	CH		White	
2	LDD_020V	S061	VK3	1-3mm	1	0,060	+3	+3	Light	\$ 15,00	\$ 0,90	Unbroken	0		White	
2	LDD_020V	S062	VK3	3-8mm	1	0,590	+17	+11	Clivage Flats	\$ 80,00	\$ 47,20	Chipped	CH	No value loss	F	Faint 001
2	LDD_020V	S063	VK3	1-3mm	1	0,175	+7	+7	Clivage White	\$ 40,00	\$ 7,00	Chipped	CH	No value loss	H	Light 002
2	LDD_020V	S063	VK3	1-3mm	1	0,070	+7	+7	Clivage White	\$ 40,00	\$ 2,80	Unbroken	4		H+	Faint 001
2	LDD_020V	S063	VK3	1-3mm	1	0,070	+5	+5	Light	\$ 20,00	\$ 1,40	Unbroken	1		H	Light 002
2	LDD_020V	S063	VK3	1-3mm	1	0,040	+3	+3	Dark	\$ 8,00	\$ 0,32	Unbroken	CH		Grey	
2	LDD_020V	S063	VK3	1-3mm	1	0,015	+1	+1	Light	\$ 10,00	\$ 0,15	Unbroken	CH		White	
2	LDD_020V	S064	VK3	1-3mm	1	0,050	+5	+5	Gam Mb	\$ 96,00	\$ 4,80	Unbroken	0		F	Light 002
3	LDD_020V	S042_R	VK3	1-3mm	1	0,010	+1	+1	Light	\$ 45,00	\$ 0,45	Unbroken	0		White	
3	LDD_020V	S050_R	VK3	3-8mm	1	0,310	+12	+11	Clivage Flats	\$ 80,00	\$ 24,80	Unbroken	0		H	Light 002
					Stones	Carats						\$ per carat	Total \$			
					78	12,365						\$ 201,49	\$ 2 491,37			

TABLE 6: SAMPLE DETAIL FOR LDD_020V (PART C)

TSODILO RESOURCES LDD SAMPLES REPORT – DECEMBER 2018

2.4A SAMPLE DETAIL – LDD 021V

Dispatch	Hole ID	Sample	Material Type	Size	Stones	Carats	Sieve Size	Sale Size	Price Point	\$ Per Carat	Total \$	RDF Breakage Category	PJL Breakage Category	Comments	Colour	Blue UV
2	LDD_021V	S065	VK3	3-8mm	1	0,670	+13	3 Grainer	Clivage White	\$130,00	\$ 87,10	Unbroken	2		H+	Light 002
2	LDD_021V	S065	VK3	1-3mm	1	0,200	+9	+9	Mb Gem High	\$165,00	\$ 33,00	Fragment	1	Same Stone Fragments, small sandstone	H-	Light 002
2	LDD_021V	S065	VK3	1-3mm	1	0,160	+9	+9	Mb Gem High	\$165,00	\$ 26,40	Fragment	2		I	Light 003
2	LDD_021V	S065	VK3	1-3mm	1	0,140	+7	+7	Clivage	\$ 40,00	\$ 5,60	Unbroken	3		H-	Light 002
2	LDD_021V	S065	VK3	1-3mm	1	0,120	+7	+7	Gem Mb	\$115,00	\$ 13,80	Fragment	2		DE	None 000
2	LDD_021V	S065	VK3	1-3mm	1	0,120	+7	+7	Gem Mb	\$115,00	\$ 13,80	Lightly Broken	2	Could have been +9	H-	Light 002
2	LDD_021V	S065	VK3	1-3mm	1	0,110	+7	+7	Gem Mb	\$115,00	\$ 12,65	Chipped	CH		DE	None 000
2	LDD_021V	S065	VK3	1-3mm	1	0,050	+5	+5	Gem Mb	\$ 95,00	\$ 4,75	Unbroken	0		White	
2	LDD_021V	S065	VK3	1-3mm	1	0,040	+5	+5	Gem Mb	\$ 95,00	\$ 3,80	Fragment	3		White	
2	LDD_021V	S065	VK3	1-3mm	1	0,015	+3	+3	Gem Mb	\$ 80,00	\$ 1,20	Unbroken	0		White	
2	LDD_021V	S066	VK3	3-8mm	1	0,965	+13	4 Gainer	Gem Z High	\$585,00	\$ 564,53	Unbroken	2	J Colour - Good Stone	H-	Light 002
2	LDD_021V	S067	VKxxx	1-3mm	1	0,060	+5	+5	Gem Mb	\$ 95,00	\$ 5,70	Unbroken	CH		White	
2	LDD_021V	S067	VKxxx	1-3mm	1	0,060	+5	+5	Light	\$ 20,00	\$ 1,20	Unbroken	CH		White	
2	LDD_021V	S067	VKxxx	1-3mm	1	0,040	+3	+3	Dark	\$ 8,00	\$ 0,32	Unbroken	0		Grey	
2	LDD_021V	S067	VKxxx	1-3mm	1	0,035	+5	+5	Light	\$ 20,00	\$ 0,70	Chipped	CH		White	
2	LDD_021V	S067	VKxxx	1-3mm	1	0,030	+3	+3	Dark	\$ 8,00	\$ 0,24	Unbroken	0		Grey	
2	LDD_021V	S067	VKxxx	1-3mm	1	0,015	+1	+1	Dark	\$ 5,00	\$ 0,08	Unbroken	0		Grey	
2	LDD_021V	S068	VKxxx	1-3mm	1	0,055	+5	+5	Light	\$ 20,00	\$ 1,10	Unbroken	1		White	

TABLE 7: SAMPLE DETAIL FOR LDD_021V (PART A)

TSODILO RESOURCES LDD SAMPLES REPORT – DECEMBER 2018

2.4B SAMPLE DETAIL – LDD 021V

Dispatch	Hole ID	Sample	Material Type	Size	Stones	Carats	Sieve Size	Sale Size	Price Point	\$ Per Carat	Total \$	RDF Breakage Category	PJL Breakage Category	Comments	Colour	Blue UV
2	LDD_021V	S068	VKxxx	1-3mm	1	0,050	+5	+5	Dark	\$ 12,00	\$ 0,60	Unbroken	CH		Grey	
2	LDD_021V	S069	VK3	3-8mm	1	0,670	+13	3 Grainer	Mb Spot	\$250,00	\$ 167,50	Chipped	1		I+	Light 003
2	LDD_021V	S069	VK3	1-3mm	1	0,135	+9	+9	Clivage White	\$ 60,00	\$ 8,10	Lightly Broken	2		H	Light 002
2	LDD_021V	S069	VK3	1-3mm	1	0,045	+3	+3	Light	\$ 15,00	\$ 0,68	Unbroken	0		White	
2	LDD_021V	S069	VK3	1-3mm	1	0,040	+3	+3	Light	\$ 15,00	\$ 0,60	Unbroken	CH		White	
2	LDD_021V	S069	VK3	1-3mm	1	0,030	+3	+3	Light	\$ 15,00	\$ 0,45	Unbroken	0		White	
2	LDD_021V	S070	VK3	1-3mm	1	0,115	+5	+5	Dark	\$ 12,00	\$ 1,38	Unbroken	0		F+	Light 003
2	LDD_021V	S071	VK3	1-3mm	1	0,340	+11	+11	Gem Mb High	\$235,00	\$ 79,90	Unbroken	0		H-	Faint 001
2	LDD_021V	S071	VK3	1-3mm	1	0,230	+9	+9	Clivage White	\$ 60,00	\$ 13,80	Unbroken	CH		J-	Light 003
2	LDD_021V	S071	VK3	1-3mm	1	0,120	+7	+7	Clivage	\$ 40,00	\$ 4,80	Unbroken	0		D	Faint 001
2	LDD_021V	S071	VK3	1-3mm	1	0,070	+5	+5	Light	\$ 20,00	\$ 1,40	Heavily Broken	CH	Could have been +7	I-	Light 002
2	LDD_021V	S071	VK3	1-3mm	1	0,055	+5	+5	Light	\$ 20,00	\$ 1,10	Unbroken	0		White	
2	LDD_021V	S071	VK3	1-3mm	1	0,040	+3	+3	Light	\$ 15,00	\$ 0,60	Unbroken	CH		White	
2	LDD_021V	S072	VK3	1-3mm	1	0,090	+7	+7	Gem Mb	\$115,00	\$ 10,35	Unbroken	2		D	Faint 001
2	LDD_021V	S072	VK3	1-3mm	1	0,090	+7	+7	Gem Mb	\$115,00	\$ 10,35	Unbroken	CH		J	Light 002
2	LDD_021V	S072	VK3	1-3mm	1	0,075	+7	+7	Clivage	\$ 40,00	\$ 3,00	Chipped	0	Light Brown	F+	Light 002
2	LDD_021V	S072	VK3	1-3mm	1	0,040	+5	+5	Dark	\$ 12,00	\$ 0,48	Unbroken	0		Grey	
2	LDD_021V	S072	VK3	1-3mm	1	0,040	+3	+3	Dark	\$ 10,00	\$ 0,40	Unbroken	CH	Brown	Grey	
2	LDD_021V	S073	VK3	1-3mm	1	0,100	+7	+7	Clivage	\$ 40,00	\$ 4,00	Unbroken	CH		H	Light 002
2	LDD_021V	S073	VK3	1-3mm	1	0,035	+5	+5	Light	\$ 20,00	\$ 0,70	Unbroken	CH		White	
2	LDD_021V	S073	VK3	1-3mm	1	0,020	+3	+3	Light	\$ 15,00	\$ 0,30	Chipped	4		White	
					Stones	Carats					\$ per carat	Total \$				
					39	5,315					\$ 204,41	\$ 1 086,45				

TABLE 8: SAMPLE DETAIL FOR LDD_021V (PART B)

TSODILO RESOURCES LDD SAMPLES REPORT – DECEMBER 2018

2.5 SAMPLE DETAIL – LDD 022V

Dispatch	Hole ID	Sample	Material Type	Size	Stones	Carats	Sieve Size	Sale Size	Price Point	\$ Per Carat	Total \$	RDF Breakage Category	PJL Breakage Category	Comments	Colour	Blue UV
1	LDD_022V	S113	VK3	1-3mm	1	0,055	+5	+5	Dark	\$ 12,00	\$ 0,66	Unbroken	0		Grey	
1	LDD_022V	S113	VK3	1-3mm	1	0,025	+3	+3	Gem Mb	\$ 80,00	\$ 2,00	Unbroken	0		White	
3	LDD_022V	S110	VK3	1-3mm	1	0,215	+9	+9	Clivage	\$ 60,00	\$ 12,90	Unbroken	0	partial green coating	D	None 000
3	LDD_022V	S110	VK3	1-3mm	1	0,025	+3	+3	Light	\$ 55,00	\$ 1,38	Unbroken	0	Light Brown	F+	Light 002
3	LDD_022V	S111	VK3	1-3mm	1	0,090	+5	+5	Light	\$ 65,00	\$ 5,85	Unbroken	0	slight green coating; TLB	F+	Faint 001
3	LDD_022V	S111	VK3	1-3mm	1	0,030	+3	+3	Light	\$ 55,00	\$ 1,65	Chipped	CH	slight green coating	G-	Light 002
3	LDD_022V	S111_R	VK3	1-3mm	1	0,250	+9	+9	Clivage Mb TLB	\$ 50,00	\$ 12,50	Unbroken	0	Faintest brown; Flat Type Ila	D	None 000
3	LDD_022V	S114	VK3	1-3mm	1	0,180	+7	+7	Gem Z High	\$ 160,00	\$ 28,80	Unbroken	0	Top stone	G-	None 000
3	LDD_022V	S114	VK3	1-3mm	1	0,070	+5	+5	Dark	\$ 10,00	\$ 0,70	Unbroken	0	Grey	Grey	
3	LDD_022V	S117	VK3	1-3mm	1	0,270	+9	+9	Z Spot 2	\$ 160,00	\$ 43,20	Unbroken	0		H	Light 003
3	LDD_022V	S117	VK3	1-3mm	1	0,150	+7	+7	Mb (2)	\$ 105,00	\$ 15,75	Unbroken	0		G+	Faint 001
3	LDD_022V	S117	VK3	1-3mm	1	0,035	+3	+3	Light	\$ 55,00	\$ 1,93	Light Break	2		White	
3	LDD_022V	S118	VK3	1-3mm	1	0,175	+9	+9	MB Spot	\$ 90,00	\$ 15,75	Unbroken	0	Macle	H-	Faint 001
3	LDD_022V	S118	VK3	1-3mm	1	0,025	+3	+3	Light	\$ 55,00	\$ 1,38	Unbroken	0		White	
3	LDD_022V	S119	VK3	1-3mm	1	0,330	+9	+9	Clivage Low	\$ 40,00	\$ 13,20	Unbroken	CH	Twinned	J+	Light 004
					Stones	Carats				\$ per carat	Total \$					
					15	1,925				\$ 81,89	\$ 157,64					

TABLE 9: SAMPLE DETAIL FOR LDD_022V

TSODILO RESOURCES LDD SAMPLES REPORT – DECEMBER 2018

2.6A SAMPLE DETAIL – LDD 023V

Dispatch	Hole ID	Sample	Material Type	Size	Stones	Carats	Sieve Size	Sale Size	Price Point	\$ Per Carat	Total \$	RDF Breakage Category	PJL Breakage Category	Comments	Colour	Blue UV
2	LDD_023V	S232	VK2	1-3mm	1	0,065	+5	+5	Light	\$ 20,00	\$ 1,30	Unbroken	0		G-	Light 002
2	LDD_023V	S232	VK2	1-3mm	1	0,060	+5	+5	Light	\$ 20,00	\$ 1,20	Unbroken	0	Light Brown	F+	Faint 001
2	LDD_023V	S240	VK3	3-8mm	1	0,325	+11	+11	Clivage White	\$ 85,00	\$ 27,63	Chipped	2	Light Brown	F	Faint 001
2	LDD_023V	S240	VK3	1-3mm	1	0,185	+7	+7	Rejection	\$ 8,00	\$ 1,48	Unbroken	0		F+	Light 002
2	LDD_023V	S240	VK3	1-3mm	1	0,160	+7	+7	Clivage	\$ 40,00	\$ 6,40	Unbroken	0		H-	None 000
2	LDD_023V	S240	VK3	1-3mm	1	0,065	+5	+5	Light	\$ 20,00	\$ 1,30	Unbroken	CH			
2	LDD_023V	S240	VK3	1-3mm	1	0,030	+3	+3	Dark	\$ 8,00	\$ 0,24	Lightly Broken	2			
3	LDD_023V	S226	VKxxx	1-3mm	1	0,265	+9	+9	Clivage Z	\$ 85,00	\$ 22,53	Unbroken	0	Dodec - Top stone	G+	Light 002
3	LDD_023V	S226	VKxxx	1-3mm	1	0,070	+5	+5	Light (Mb)	\$ 65,00	\$ 4,55	Unbroken	0	Octaheral		
3	LDD_023V	S227	VKxxx	1-3mm	1	0,025	+3	+3	Light	\$ 55,00	\$ 1,38	Unbroken	0			
3	LDD_023V	S228	VKxxx	3-8mm	1	0,420	+11	+11	Mb Gem High	\$ 220,00	\$ 92,40	Unbroken	0	E+ Colour Irregular dodec	E	Medium 007
3	LDD_023V	S228	VKxxx	1-3mm	1	0,230	+7	+7	Fancy Shape Mb	\$ 85,00	\$ 19,55	Unbroken	CH	Elongate and Irregular	D	Strong 034
3	LDD_023V	S228	VKxxx	1-3mm	1	0,210	+9	+9	Z Gem High	\$ 220,00	\$ 46,20	Unbroken	0	Dodec - Top stone	G	Faint 001
3	LDD_023V	S228	VKxxx	1-3mm	1	0,040	+5	+5	Light (Mb)	\$ 65,00	\$ 2,60	Unbroken	0			
3	LDD_023V	S228	VKxxx	1-3mm	1	0,030	+3	+3	Light (Mb)	\$ 55,00	\$ 1,65	Unbroken	0			
3	LDD_023V	S229	VKxxx	3-8mm	1	0,730	+13	3 Grainer	Mb Gem High	\$ 350,00	\$ 255,50	Unbroken	0	F+ colour irregular dodec	H-	Light 002
3	LDD_023V	S229	VKxxx	1-3mm	1	0,075	+5	+5	Light (Mb)	\$ 65,00	\$ 4,88	Unbroken	0			
3	LDD_023V	S229	VKxxx	1-3mm	1	0,075	+5	+5	Dark (Cliv)	\$ 12,00	\$ 0,90	Unbroken	0	Spot		
3	LDD_023V	S229	VKxxx	1-3mm	1	0,045	+3	+3	Light (Mb)	\$ 55,00	\$ 2,48	Unbroken	0			
3	LDD_023V	S229	VKxxx	1-3mm	1	0,020	+1	+1	Light (Mb)	\$ 45,00	\$ 0,90	Unbroken	CH			
3	LDD_023V	S230	VKxxx	1-3mm	1	0,205	+9	+9	Clivage	\$ 85,00	\$ 17,43	Unbroken	0		D	None 000
3	LDD_023V	S230	VKxxx	1-3mm	1	0,045	+3	+3	Light (Z)	\$ 55,00	\$ 2,48	Unbroken	0			
3	LDD_023V	S230	VKxxx	1-3mm	1	0,015	+1	+1	Dark (Clivage)	\$ 4,00	\$ 0,06	Unbroken	0	Grey		
3	LDD_023V	S231	VK2	1-3mm	1	0,305	+9	+9	Coloured Gem	\$ 85,00	\$ 25,93	Unbroken	0	Faint yellow, Elongated irregular Dodec	K	Faint 001
3	LDD_023V	S231	VK2	1-3mm	1	0,175	+7	+7	Z Gem High	\$ 155,00	\$ 27,13	Unbroken	0		G	Light 004
3	LDD_023V	S231	VK2	1-3mm	1	0,095	+5	+5	Light (Z)	\$ 65,00	\$ 6,18	Unbroken	0			
3	LDD_023V	S233	VK2	1-3mm	1	0,030	+3	+3	Light (Mb)	\$ 55,00	\$ 1,65	Unbroken	0			
3	LDD_023V	S234	VK2	1-3mm	1	0,030	+3	+3	Light	\$ 55,00	\$ 1,65	Unbroken	0	Flat		
3	LDD_023V	S235	VK2	1-3mm	1	0,145	+9	+9	Clivage	\$ 85,00	\$ 12,33	Unbroken	CH		H-	Light 002
3	LDD_023V	S235	VK2	1-3mm	1	0,055	+5	+5	Light (Mb)	\$ 65,00	\$ 3,58	Heavy	4	Heavy breakage		
3	LDD_023V	S235	VK2	1-3mm	1	0,050	+5	+5	Light (Mb)	\$ 65,00	\$ 3,25	Light Break	1	Heavy to Light breakage, possible all 3 were one stone - if so then HEAVY BREAKAGE		

TABLE 10: SAMPLE DETAIL FOR LDD_023V (PART A)

TSODILO RESOURCES LDD SAMPLES REPORT – DECEMBER 2018

2.6B SAMPLE DETAIL – LDD 023V

Dispatch	Hole ID	Sample	Material Type	Size	Stones	Carats	Sieve Size	Sale Size	Price Point	\$ Per Carat	Total \$	RDF Breakage Category	PJL Breakage Category	Comments	Colour	Blue UV
3	LDD_023V	S235	VK2	1-3mm	1	0,050	+5	+5	Light (Mb)	\$ 65,00	\$ 3,25	Light Break	1			
3	LDD_023V	S235	VK2	1-3mm	1	0,045	+5	+5	Light (Mb)	\$ 65,00	\$ 2,93	Light Break	2			
3	LDD_023V	S235	VK2	1-3mm	1	0,020	+3	+3	Light (Mb)	\$ 65,00	\$ 1,30	Chipped	CH			
3	LDD_023V	S236	VK2	1-3mm	1	0,220	+9	+9	Clivage	\$ 85,00	\$ 18,70	Light Break	0	(GB) Cracked stone	H-	Light 002
3	LDD_023V	S236	VK2	1-3mm	1	0,145	+7	+7	Z Spot	\$ 130,00	\$ 18,85	Unbroken	0	D colour	D	Light 002
3	LDD_023V	S236	VK2	1-3mm	1	0,135	+7	+7	Mb Gem High	\$ 120,00	\$ 16,20	Unbroken	0	G colour	H+	Medium 008
3	LDD_023V	S237	VK2	3-8mm	1	0,370	+11	+11	Z Spot Light	\$ 220,00	\$ 81,40	Unbroken	0	Dodec	I+	Light 002
3	LDD_023V	S237	VK2	1-3mm	1	0,055	+3	+3	Light (Cliv	\$ 30,00	\$ 1,65	Chipped	2			
3	LDD_023V	S237	VK2	1-3mm	1	0,030	+3	+3	Light (Mb)	\$ 55,00	\$ 1,65	Heavy Breakage	3			
3	LDD_023V	S238	VK2	3-8mm	1	0,165	+7	+7	Rejection	\$ 8,00	\$ 1,32	Unbroken	CH		J	Light 004
3	LDD_023V	S238	VK2	1-3mm	1	0,115	+7	+7	Mb Gem High	\$ 110,00	\$ 12,65	Unbroken	0	Blocky irregular	D	Faint 001
3	LDD_023V	S238	VK2	1-3mm	1	0,035	+5	+5	Light (Flat)	\$ 35,00	\$ 1,23	Unbroken	0		D	None 000
3	LDD_023V	S241	VK3	1-3mm	1	0,130	+7	+7	Clivage Low/ Rej	\$ 12,00	\$ 1,56	Light? Impact	Ch		H-	Light 004
3	LDD_023V	S241	VK3	1-3mm	1	0,025	+3	+3	Dark (Rej Spot)	\$ 4,00	\$ 0,10	Unbroken	0		D	Light 002
3	LDD_023V	S242	VK3	1-3mm	1	0,310	+11	+11	Mb Gem High	\$ 225,00	\$ 69,75	Unbroken	0	Macle Dodec	H-	Light 002
3	LDD_023V	S242	VK3	1-3mm	1	0,110	+7	+7	Clivage	\$ 60,00	\$ 6,60	Chip Impact	CH	Impact	G	Light 002
3	LDD_023V	S242	VK3	1-3mm	1	0,100	+5	+5	Light (Mb)	\$ 65,00	\$ 6,50	Unbroken	0		I+	Faint 001
3	LDD_023V	S242	VK3	1-3mm	1	0,070	+7	+7	Clivage	\$ 60,00	\$ 4,20	Heavy	3	Same stone Breakage	G	Light 002
3	LDD_023V	S242	VK3	1-3mm	1	0,050	+5	+5	Light (Clivage)	\$ 40,00	\$ 2,00	Heavy	2			
3	LDD_023V	S242	VK3	1-3mm	1	0,025	+3	+3	Light (Mb)	\$ 55,00	\$ 1,38	Unbroken	CH			
3	LDD_023V	S243	VK3	1-3mm	1	0,065	+5	+5	Light (Clivage)	\$ 35,00	\$ 2,28	Unbroken	0			
3	LDD_023V	S243	VK3	1-3mm	1	0,045	+3	+3	Light (Mb)	\$ 55,00	\$ 2,48	Unbroken	0	Flat		
3	LDD_023V	S243	VK3	1-3mm	1	0,025	+3	+3	Light (Mb)	\$ 55,00	\$ 1,38	Unbroken	CH	Flat		
3	LDD_023V	S243	VK3	1-3mm	1	0,020	+3	+3	Light (Mb)	\$ 55,00	\$ 1,10	Chipped	1			
					Stones	Carats					\$ per carat	Total \$				
					55	6,635					\$ 129,18	\$ 857,11				

TABLE 11: SAMPLE DETAIL FOR LDD_023V (PART B)

TSODILO RESOURCES LDD SAMPLES REPORT – DECEMBER 2018

2.7A SAMPLE DETAIL – LDD 024V

Dispatch	Hole ID	Sample	Material Type	Size	Stones	Carats	Sieve Size	Sale Size	Price Point	\$ Per Carat	Total \$	Ray Breakage Category	Paddy Breakage Category	Comments	Colour	Blue UV
3	LDD_024V	S204	VK3	1-3mm	1	0,225	+9	+9	Mb Flat	\$ 120,00	\$ 27,00	Unbroken	0	Inclusions. Flat stone	D	None 000
3	LDD_024V	S205	VK3	1-3mm	1	0,195	+9	+9	Clivage	\$ 60,00	\$ 11,70	Unbroken	1		White	
3	LDD_024V	S205	VK3	1-3mm	1	0,020	+3	+3	Light (Cliv)	\$ 40,00	\$ 0,80	Unbroken	0		White	
3	LDD_024V	S207	VK3	1-3mm	1	0,075	+5	+5	Light (Mb)	\$ 65,00	\$ 4,88	Unbroken	0		White	
3	LDD_024V	S207	VK3	1-3mm	1	0,065	+5	+5	Light (Z)	\$ 85,00	\$ 5,53	Unbroken	0		White	
3	LDD_024V	S207	VK3	1-3mm	1	0,060	+5	+5	Light (Cliv)	\$ 40,00	\$ 2,40	Unbroken	0		White	
3	LDD_024V	S207	VK3	1-3mm	1	0,050	+5	+5	Light (Cliv)	\$ 40,00	\$ 2,00	Chipped	1		Grey	
3	LDD_024V	S207	VK3	1-3mm	1	0,035	+5	+5	Light (Mb)	\$ 65,00	\$ 2,28	Unbroken	0	Irregular Octahedron	White	
3	LDD_024V	S207	VK3	1-3mm	1	0,035	+3	+3	Light (Mb)	\$ 55,00	\$ 1,93	Unbroken	0		White	
3	LDD_024V	S207	VK3	1-3mm	1	0,020	+3	+3	Light (Mb Flat)	\$ 35,00	\$ 0,70	Chipped	CH	Impact	White	
3	LDD_024V	S208	VK3	3-8mm	1	0,570	+11	+11	MB Spot	\$ 60,00	\$ 34,20	Unbroken	0	Dodec Maccle tetragonal pit,	D	None 000
3	LDD_024V	S208	VK3	1-3mm	1	0,110	+7	+7	Clivage	\$ 60,00	\$ 6,60	Chipped	1	Impact	F	Faint 001
3	LDD_024V	S209	VK3	1-3mm	1	0,260	+9	+9	Brown Gem 2	\$ 45,00	\$ 11,70	Unbroken	0	Light brown dodec	F+	Faint 001
3	LDD_024V	S209	VK3	1-3mm	1	0,045	+7	+7	Mb Flats	\$ 85,00	\$ 3,83	Unbroken	0		White	
3	LDD_024V	S209	VK3	1-3mm	1	0,025	+1	+1	Light (Z)	\$ 55,00	\$ 1,38	Unbroken	0		White	
3	LDD_024V	S209	VK3	1-3mm	1	0,025	+1	+1	Light Mb	\$ 40,00	\$ 1,00	Unbroken	0		White	
3	LDD_024V	S209	VK3	1-3mm	1	0,025	+1	+1	Light (Cliv)	\$ 30,00	\$ 0,75	Chipped	CH		White	
3	LDD_024V	S210	VK3	1-3mm	1	0,255	+9	+9	Mb Spot	\$ 85,00	\$ 21,68	Unbroken	0		G-	Light 002
3	LDD_024V	S210	VK3	1-3mm	1	0,160	+9	+9	Rejection	\$ 12,00	\$ 1,92	Chipped	1	Rejection	D	Light 002
3	LDD_024V	S210	VK3	1-3mm	1	0,045	+3	+3	Light (Z)	\$ 65,00	\$ 2,93	Unbroken	0		White	
3	LDD_024V	S210	VK3	1-3mm	1	0,020	+1	+1	Light (Z)	\$ 45,00	\$ 0,90	Unbroken	0		White	
3	LDD_024V	S211	VK3	3-8mm	1	0,350	+13	+11	Mb Flat	\$ 180,00	\$ 63,00	Unbroken	0	Triangular maccle Flat	H	Faint 001
3	LDD_024V	S211	VK3	1-3mm	1	0,145	+5	+5	Light (Clivage)	\$ 45,00	\$ 6,53	Unbroken	0	Long Dodec, Twinned Maccle	D	Faint 001
3	LDD_024V	S211	VK3	1-3mm	1	0,145	+7	+7	Brown Clivage	\$ 12,00	\$ 1,74	Chipped	1	Light Brown Stone	F+	Faint 001
3	LDD_024V	S211	VK3	1-3mm	1	0,100	+7	+7	Mb Gem	\$ 105,00	\$ 10,50	Unbroken	0		DE	Faint 001
3	LDD_024V	S211	VK3	1-3mm	1	0,060	+5	+5	Light (Mb)	\$ 65,00	\$ 3,90	Unbroken	0		H	Light 002
3	LDD_024V	S211	VK3	1-3mm	1	0,040	+5	+5	Light (Mb)	\$ 65,00	\$ 2,60	Light Break	2		D	Faint 001

TABLE 12: SAMPLE DETAIL FOR LDD_024V (PART A)

TSODILO RESOURCES LDD SAMPLES REPORT – DECEMBER 2018

2.7B SAMPLE DETAIL – LDD 024V

Dispatch	Hole ID	Sample	Material Type	Size	Stones	Carats	Sieve Size	Sale Size	Price Point	\$ Per Carat	Total \$	Ray Breakage Category	Paddy Breakage Category	Comments	Colour	Blue UV	
3	LDD_024V	S212	VK3	1-3mm	1	0,140	+7	+7	Clivage	\$ 60,00	\$ 8,40	Chipped	CH	GB - pre-existing crack	J	Light 002	
3	LDD_024V	S213	VK3	1-3mm	1	0,030	+1	+1	Light (Cliv)	\$ 30,00	\$ 0,90	Unbroken	0	Dodec	White		
3	LDD_024V	S215	VK3	3-8mm	1	1,935	+17	8 Grain	G Clivage High	\$ 350,00	\$ 677,25	Unbroken	CH	Irregular Dodec Spotted (if clean = \$1,200)	F+	Light 002	
3	LDD_024V	S215	VK3	1-3mm	1	0,050	+1	+1	Light (Mb)	\$ 35,00	\$ 1,75	Chipped	CH		White		
3	LDD_024V	S216	VK3	1-3mm	1	0,255	+9	+9	Clivage	\$ 85,00	\$ 21,68	Unbroken	0	Twinned Maccle	H+	Faint 001	
3	LDD_024V	S217	VK3	1-3mm	1	0,330	+9	+9	Z Spot	\$ 165,00	\$ 54,45	Unbroken	0	Dodec Elongated	I-	Light 003	
3	LDD_024V	S217	VK3	1-3mm	1	0,145	+7	+7	Mb Spot	\$ 65,00	\$ 9,43	Unbroken	0	Twinned Octahedron	D	Light 004	
3	LDD_024V	S217	VK3	1-3mm	1	0,055	+5	+5	Light	\$ 65,00	\$ 3,58	Unbroken	0	Dodec	White		
3	LDD_024V	S218	VK3	1-3mm	1	0,135	+5	+5	Light (Cliv)	\$ 40,00	\$ 5,40	Unbroken	0	Spotted	D	Fait 001	
3	LDD_024V	S219	VK3	3-8mm	1	0,270	+11	+11	Clivage Low	\$ 45,00	\$ 12,15	Unbroken	0		H-	Faint 001	
3	LDD_024V	S219	VK3	1-3mm	1	0,050	+3	+3	Light (Mb)	\$ 55,00	\$ 2,75	Unbroken	0		White		
3	LDD_024V	S219	VK3	1-3mm	1	0,045	+3	+3	Light (Mb)	\$ 55,00	\$ 2,48	Chipped	CH		White		
3	LDD_024V	S220	VK3	1-3mm	1	0,085	+5	+5	Light (Mb)	\$ 65,00	\$ 5,53	Unbroken	0		White		
3	LDD_024V	S220	VK3	1-3mm	1	0,075	+5	+5	Light (Mb)	\$ 65,00	\$ 4,88	Chipped	1		White		
3	LDD_024V	S220	VK3	1-3mm	1	0,045	+3	+3	Light (Z)	\$ 60,00	\$ 2,70	Unbroken	0		White		
3	LDD_024V	S220	VK3	1-3mm	1	0,040	+3	+3	Light (Cliv)	\$ 30,00	\$ 1,20	Unbroken	0		Grey		
3	LDD_024V	S223	VK2	1-3mm	1	0,135	+7	+7	Mb Gem High	\$ 110,00	\$ 14,85	Unbroken	0	TLB	E	None 000	
3	LDD_024V	S223	VK2	1-3mm	1	0,075	+5	+5	Light (Mb)	\$ 65,00	\$ 4,88	Unbroken	0		White		
3	LDD_024V	S223	VK2	1-3mm	1	0,050	+3	+3	Light (Z)	\$ 85,00	\$ 4,25	Unbroken	0		White		
3	LDD_024V	S223	VK2	1-3mm	1	0,050	+5	+5	Light (Z)	\$ 85,00	\$ 4,25	Unbroken	0		White		
3	LDD_024V	S223	VK2	1-3mm	1	0,035	+3	+3	Light (Mb)	\$ 85,00	\$ 2,98	Unbroken	0	Flat	White		
					Stones	Carats						\$ per carat	Total \$				
					48	7,190						\$ 150,21	\$ 1 080,04				

TABLE 13: SAMPLE DETAIL FOR LDD_024V (PART B)

TSODILO RESOURCES LDD SAMPLES REPORT – DECEMBER 2018

2.8A SAMPLE DETAIL – LDD 025V

Dispatch	Hole ID	Sample	Material Type	Size	Stones	Carats	Sieve Size	Sale Size	Price Point	\$ Per Carat	Total \$	RDF Breakage Category	PJL Breakage Category	Comments	Colour	Blue UV
3	LDD_025V	S150	VK3	1-3mm	1	0,040	+5	+5	Light	\$ 65,00	\$ 2,60	Unbroken	0		White	
3	LDD_025V	S150	VK3	1-3mm	1	0,015	+1	+1	Light	\$ 45,00	\$ 0,68	Unbroken	0		White	
3	LDD_025V	S151	VK3	3-8mm	1	0,510	+12	+11	Fancy Shape Mb	\$ 180,00	\$ 91,80	Unbroken	0	Nice oval stone. Flat Dodec Green stain. G col	H	Faint 001
3	LDD_025V	S151	VK3	1-3mm	1	0,170	+7	+7	Clivage High	\$ 40,00	\$ 6,80	Unbroken	0	Tiny chipped edge	E	Faint 001
3	LDD_025V	S151	VK3	1-3mm	1	0,075	+5	+5	Light (Mb)	\$ 65,00	\$ 4,88	Unbroken	0	Macle	White	
3	LDD_025V	S152	VK3	1-3mm	1	0,200	+7	+7	Mb Gem High	\$ 115,00	\$ 23,00	Unbroken	0	Dodec (inclusion)	H	Light 002
3	LDD_025V	S154	VK3	3-8mm	1	1,065	+13	4 Grainer	MB Spotted 1	\$ 288,00	\$ 306,72	Unbroken	0	Rounded dodec maccle	H+	Faint 001
3	LDD_025V	S156	VK3	3-8mm	1	0,545	+12	+11	Mb Spotted	\$ 160,00	\$ 87,20	Unbroken	0	Rounded dodec maccle	H+	Light 002
3	LDD_025V	S156	VK3	1-3mm	1	0,250	+11	+11	Mb Gem High	\$ 215,00	\$ 53,75	Unbroken	0	Macle	H	Medium 010
3	LDD_025V	S156	VK3	1-3mm	1	0,060	+3	+3	Light (Mb)	\$ 55,00	\$ 3,30	Unbroken	0		White	
3	LDD_025V	S157	VK3	1-3mm	1	0,200	+9	+9	Mb Gem High	\$ 160,00	\$ 32,00	Unbroken	0	Nice flat dodec	D	None 000
3	LDD_025V	S157	VK3	1-3mm	1	0,055	+5	+5	Light	\$ 65,00	\$ 3,58	Unbroken	0		White	
3	LDD_025V	S157	VK3	1-3mm	1	0,045	+5	+5	Light	\$ 65,00	\$ 2,93	Unbroken	0		White	
3	LDD_025V	S158	VK3	1-3mm	1	0,200	+9	+9	Z Gem High	\$ 210,00	\$ 42,00	Unbroken	0		G	Light 003
3	LDD_025V	S158	VK3	1-3mm	1	0,080	+5	+5	Light (Cliv)	\$ 50,00	\$ 4,00	Unbroken	0		White	
3	LDD_025V	S158	VK3	1-3mm	1	0,065	+5	+5	Z Light	\$ 80,00	\$ 5,20	Unbroken	0		White	
3	LDD_025V	S158	VK3	1-3mm	1	0,065	+5	+5	Light	\$ 65,00	\$ 4,23	Unbroken	0		White	
3	LDD_025V	S158	VK3	1-3mm	1	0,030	+3	+3	Light	\$ 55,00	\$ 1,65	Unbroken	0		White	
3	LDD_025V	S161	VK3	3-8mm	1	0,645	+13	+11	MB Gem 2	\$ 188,00	\$ 121,26	Unbroken	0	Nice rounded Maccle; Clean centre	H+	Faint 001
3	LDD_025V	S161	VK3	1-3mm	1	0,105	+5	+5	Dark (Grey)	\$ 12,00	\$ 1,26	Unbroken	0	Yehuda TLB, grey	TLB	Faint 001
3	LDD_025V	S162	VK3	1-3mm	1	0,045	+5	+5	Light (Cliv)	\$ 50,00	\$ 2,25	Unbroken	0		White	
3	LDD_025V	S163	VK3	1-3mm	1	0,140	+7	+7	Mb Flat	\$ 85,00	\$ 11,90	Unbroken	0	Sharks tooth maccle	H+	Faint 001
3	LDD_025V	S163	VK3	1-3mm	1	0,055	+5	+5	Light (Mb)	\$ 65,00	\$ 3,58	Chipped	1		White	
3	LDD_025V	S163	VK3	1-3mm	1	0,015	+3	+3	Light (Mb)	\$ 55,00	\$ 0,83	Unbroken	0		White	
3	LDD_025V	S164	VK3	3-8mm	1	0,745	+12	3 Grainer	Gem Z High	\$ 405,00	\$ 301,73	Unbroken	0	J colour dodec	I+	Faint 001
3	LDD_025V	S164	VK3	3-8mm	1	0,455	+11	+11	White Clivage High	\$ 80,00	\$ 36,40	Unbroken	0		I	Light 003
3	LDD_025V	S164	VK3	1-3mm	1	0,190	+9	+9	Z Spot Light	\$ 188,00	\$ 35,72	Unbroken	0	Nice dodec; TLB	F+	Light 002
3	LDD_025V	S164	VK3	1-3mm	1	0,140	+9	+9	Rej	\$ 8,00	\$ 1,12	Chipped	CH	Rej High - Light Brown	DE	Faint 001

TABLE 14: SAMPLE DETAIL FOR LDD_025V (PART A)

TSODILO RESOURCES LDD SAMPLES REPORT – DECEMBER 2018

2.8B SAMPLE DETAIL – LDD 025V

Dispatch	Hole ID	Sample	Material Type	Size	Stones	Carats	Sieve Size	Sale Size	Price Point	\$ Per Carat	Total \$	RDF Breakage Category	PJL Breakage Category	Comments	Colour	Blue UV
3	LDD_025V	S164	VK3	1-3mm	1	0,075	+5	+5	Light (Cliv)	\$ 50,00	\$ 3,75	Unbroken	0	Olivine/Enstatite inclusions	TLB	Faint 001
3	LDD_025V	S164	VK3	1-3mm	1	0,040	+3	+3	Light (Cliv)	\$ 40,00	\$ 1,60	Unbroken	0		White	
3	LDD_025V	S164	VK3	1-3mm	1	0,020	+1	+1	Light (Cliv)	\$ 30,00	\$ 0,60	Unbroken	0	Olivine/Enstatite inclusions	White	
3	LDD_025V	S165	VK3	1-3mm	1	0,170	+9	+9	Mb Gem High	\$ 160,00	\$ 27,20	Unbroken	0	Macle	H-	Faint 001
3	LDD_025V	S165	VK3	1-3mm	1	0,080	+5	+5	Dark (Grey)	\$ 12,00	\$ 0,96	Unbroken	0		Grey	
3	LDD_025V	S165	VK3	1-3mm	1	0,045	+5	+5	Light (Mb Flat)	\$ 50,00	\$ 2,25	Unbroken	0	Flat Maccle	White	
3	LDD_025V	S166	VK3	1-3mm	1	0,110	+7	+7	Mb Gem High	\$ 105,00	\$ 11,55	Unbroken	0	Flat dodec	DE	Faint 001
3	LDD_025V	S166	VK3	1-3mm	1	0,035	+5	+5	Light (Clivage)	\$ 50,00	\$ 1,75	Chipped	1	Impact to edge	D	Faint 001
3	LDD_025V	S167	VK3	1-3mm	1	0,050	+5	+5	Light (Clivage)	\$ 50,00	\$ 2,50	Unbroken	0	Blocky irregular	Grey	
3	LDD_025V	S168	VK3	1-3mm	1	0,035	+3	+3	Light (Mb)	\$ 45,00	\$ 1,58	Unbroken	0		White	
3	LDD_025V	S169	VK3	1-3mm	1	0,230	+9	+9	Mb Gem High	\$ 160,00	\$ 36,80	Unbroken	0	Flattened dodec clean	H+	Light 002
3	LDD_025V	S169	VK3	1-3mm	1	0,120	+7	+7	Clivage	\$ 40,00	\$ 4,80	Unbroken	0	Spotted	D	None 000
3	LDD_025V	S170	VK3	1-3mm	1	0,135	+7	+7	Mb Gem High	\$ 105,00	\$ 14,18	Unbroken	0	Long Dodec	H	Faint 001
3	LDD_025V	S171	VK3	1-3mm	1	0,060	+3	+3	Light	\$ 45,00	\$ 2,70	Unbroken	0		White	
3	LDD_025V	S172	VK3	1-3mm	1	0,035	+9	+9	Clivage	\$ 60,00	\$ 2,10	Unbroken	0	Long maccle dodec	White	
3	LDD_025V	S173	VK3	1-3mm	1	0,275	+7	+7	Clivage	\$ 40,00	\$ 11,00	Chipped	0	Impact	D	None 000
3	LDD_025V	S174	VK3	1-3mm	1	0,065	+7	+7	Clivage	\$ 40,00	\$ 2,60	Chipped	1	Flat - TLB	DE	None 000
3	LDD_025V	S175	VK3	1-3mm	1	0,090	+5	+5	Light Z	\$ 80,00	\$ 7,20	Unbroken	0	Dodec	White	
3	LDD_025V	S175	VK3	1-3mm	1	0,060	+3	+3	Dark (Rej)	\$ 10,00	\$ 0,60	Chipped	1	Grey	Grey	
3	LDD_025V	S175	VK3	1-3mm	1	0,045	+3	+3	Light (Clivage)	\$ 45,00	\$ 2,03	Unbroken	CH		White	
3	LDD_025V	S175	VK3	1-3mm	1	0,040	+3	+3	Light Mb	\$ 55,00	\$ 2,20	Unbroken	CH		White	
3	LDD_025V	S175	VK3	1-3mm	1	0,015	+1	+3	Dark	\$ 10,00	\$ 0,15	Chipped	CH		Grey	
3	LDD_025V	S176	VK3	1-3mm	1	0,080	+7	+7	Clivage	\$ 40,00	\$ 3,20	Chipped	CH		White	
3	LDD_025V	S176	VK3	1-3mm	1	0,020	+5	+5	Light (Flat)	\$ 45,00	\$ 0,90	Chipped	CH	Flat	White	
3	LDD_025V	S176	VK3	1-3mm	1	0,015	+3	+3	Light	\$ 55,00	\$ 0,83	Heavy	4		White	
3	LDD_025V	S176	VK3	1-3mm	1	0,015	+3	+3	Dark (Grey)	\$ 5,00	\$ 0,08	Chipped	CH		Grey	
3	LDD_025V	S176	VK3	1-3mm	1	0,015	+1	+1	Dark (Grey)	\$ 4,00	\$ 0,06	Chipped	1		Grey	
3	LDD_025V	S176	VK3	1-3mm	1	0,005	-1	NA	"Dust"	\$ -	\$ -	NA	0	Minus 1 diamond too small to value (Dust or Micro)		
					Stones	Carats					\$ per carat	Total \$				
					56	8,185					\$ 163,41	\$ 1 337,48				

TABLE 15: SAMPLE DETAIL FOR LDD_025V (PART B)

TSODILO RESOURCES LDD SAMPLES REPORT – DECEMBER 2018

2.9 SAMPLE DETAIL – LDD 026V

Dispatch	Hole ID	Sample	Material Type	Size	Stones	Carats	Sieve Size	Sale Size	Price Point	\$ Per Carat	Total \$	RDF Breakage Category	PJL Breakage Category	Comments	Colour	Blue UV
1	LDD_026V	S001+S002	VK3	1-3mm	1	0,030	+3	+3	Gem Z	\$ 105,00	\$ 3,15	Unbroken	0		White	
1	LDD_026V	S005	VK3	1-3mm	1	0,320	+11	+11	Clivage White	\$ 85,00	\$ 27,20	Unbroken	0		I	Light 002
1	LDD_026V	S006	VK3	1-3mm	1	0,065	+5	+5	Dark	\$ 12,00	\$ 0,78	Unbroken	CH		DE	Faint 001
1	LDD_026V	S007	VK3	1-3mm	1	0,045	+5	+5	Dark	\$ 12,00	\$ 0,54	Unbroken	0		F-	Faint 001
1	LDD_026V	S008	VK3	3-8mm	1	0,815	+13	3 Grainer	Mb Spot	\$ 375,00	\$ 305,63	Unbroken	0	G+ Colour	G	Light 002
1	LDD_026V	S008	VK3	1-3mm	1	0,115	+5	+5	Gem Mb	\$ 95,00	\$ 10,93	Unbroken	0		H	Light 002
1	LDD_026V	S008	VK3	1-3mm	1	0,065	+3	+3	Gem Z	\$ 105,00	\$ 6,83	Chipped	0		G	None 000
1	LDD_026V	S009	VK3	1-3mm	1	0,090	+7	+7	Clivage White	\$ 12,00	\$ 1,08	Unbroken	0	Type IIa	D	Faint 001
1	LDD_026V	S011	VK3	1-3mm	1	0,060	+5	+5	Light	\$ 20,00	\$ 1,20	Unbroken	0		J+	Light 002
1	LDD_026V	S012	VK3	1-3mm	1	0,115	+7	+7	Gem Mb	\$ 115,00	\$ 13,23	Unbroken	0		D	None 000
1	LDD_026V	S012	VK3	1-3mm	1	0,045	+5	+5	Light	\$ 20,00	\$ 0,90	Unbroken	0		White	
1	LDD_026V	S013	VK3	3-8mm	1	0,390	+12	+11	Rejection	\$ 12,00	\$ 4,68	Chipped	2		I+	Light 002
1	LDD_026V	S013	VK3	1-3mm	1	0,045	+3	+3	Light	\$ 15,00	\$ 0,68	Unbroken	CH		White	
1	LDD_026V	S013	VK3	1-3mm	1	0,035	+5	+5	Light	\$ 20,00	\$ 0,70	Fragment	CH	Part of larger stone	White	
1	LDD_026V	S013	VK3	1-3mm	1	0,025	+3	+3	Light	\$ 15,00	\$ 0,38	Unbroken	CH	Suplhide Inclusion	White	
2	LDD_026V	S001-S013	VK3	1-3mm	1	0,030	+3	+3	Dark	\$ 8,00	\$ 0,24	Chipped	0	Retreat Retreat	Grey	
2	LDD_026V	S001-S013	VK3	1-3mm	1	0,025	+5	+5	Dark	\$ 12,00	\$ 0,30	Chipped	CH	Retreat Retreat	Grey	
2	LDD_026V	S001-S013	VK3	1-3mm	1	0,010	+1	+1	Dark	\$ 5,00	\$ 0,05	Fragment	CH	Part of larger stone; Retreat Retreat	Grey	
					Stones	Carats						\$ per carat	Total \$			
					18	2,325						\$ 162,78	\$ 378,47			

TABLE 16: SAMPLE DETAIL FOR LDD_026V

TSODILO RESOURCES LDD SAMPLES REPORT – DECEMBER 2018

2.10 SAMPLE DETAIL – LDD 027V

Dispatch	Hole ID	Sample	Material Type	Size	Stones	Carats	Sieve Size	Sale Size	Price Point	\$ Per Carat	Total \$	RDF Breakage Category	PJL Breakage Category	Comments	Colour	Blue UV
3	LDD_027V	S106	VK2	1-3mm	1	0,070	+5	+5	Light	\$ 65,00	\$ 4,55	Chipped	1		H+	Light 004
3	LDD_027V	S106	VK2	1-3mm	1	0,045	+5	+5	Light	\$ 65,00	\$ 2,93	Unbroken	0	Thin green coating	G-	Faint 001
					Stones	Carats				\$ per carat	Total \$					
					2	0,115				\$ 65,00	\$ 7,48					

TABLE 17: SAMPLE DETAIL FOR LDD_027V

2.11 SAMPLE DETAIL – LDD 030V

Dispatch	Hole ID	Sample	Material Type	Size	Stones	Carats	Sieve Size	Sale Size	Price Point	\$ Per Carat	Total \$	RDF Breakage Category	PJL Breakage Category	Comments	Colour	Blue UV
2	LDD_030V	S180	VK3	1-3mm	1	0,230	+9	+9	Gam Mb High	\$ 165,00	\$ 37,95	Unbroken	CH		H+	Faint 001
2	LDD_030V	S180	VK3	1-3mm	1	0,035	+3	+3	Light	\$ 15,00	\$ 0,53	Chipped	CH	Hackly	White	
2	LDD_030V	S180	VK3	1-3mm	1	0,020	+3	+3	Light	\$ 15,00	\$ 0,30	Light Breakage	0	Hackly	White	
3	LDD_030V	S177	VK3	1-3mm	1	0,085	+5	+5	Dark (Rej)	\$ 4,00	\$ 0,34	Unbroken	0	Grey Flat Rejection	F+	Faint 001
3	LDD_030V	S177	VK3	1-3mm	1	0,055	+5	+5	Light (Z)	\$ 80,00	\$ 4,40	Unbroken	0		White	
3	LDD_030V	S178	VK3	1-3mm	1	0,145	+9	+9	Cliv Low/Rej High	\$ 16,00	\$ 2,32	Unbroken	CH	Spotted/cracked	I+	Light 002
3	LDD_030V	S179	VK3	1-3mm	1	0,195	+9	+9	Rej High	\$ 12,00	\$ 2,34	Unbroken	0	Rejection High	K+	Light 003
3	LDD_030V	S182	VK3	1-3mm	1	0,030	+3	+3	Light (Mb)	\$ 45,00	\$ 1,35	Unbroken	0		White	
3	LDD_030V	S183	VK3	1-3mm	1	0,145	+9	+9	Mb 2	\$ 128,00	\$ 18,56	Unbroken	0		H-	Light 002
3	LDD_030V	S183	VK3	1-3mm	1	0,060	+7	+7	Cliv Mb Light	\$ 55,00	\$ 3,30	Unbroken	0	Flat Maccle	F-	Light 002
3	LDD_030V	S184	VK3	1-3mm	1	0,065	+5	+5	Light (Mb)	\$ 65,00	\$ 4,23	Unbroken	0		White	
3	LDD_030V	S185	VK2	3-8mm	1	0,415	+12	+11	Fancy Shape Mb	\$ 200,00	\$ 83,00	Unbroken	0	G+ colour Flat Dodec	H+	Faint 001
3	LDD_030V	S185	VK2	1-3mm	1	0,160	+7	+7	Clivage Coloured	\$ 35,00	\$ 5,60	Unbroken	0	Strong yellow colour, Strong yellow Fluor	G+	Strong 022
3	LDD_030V	S186	VK2	1-3mm	1	0,015	+1	+1	Light (Cliv)	\$ 30,00	\$ 0,45	Light Breakage	1		White	
					Stones	Carats				\$ per carat	Total \$					
					14	1,655				\$ 99,49	\$ 164,66					

TABLE 18: SAMPLE DETAIL FOR LDD_030V

TSODILO RESOURCES LDD SAMPLES REPORT – DECEMBER 2018

2.12A SAMPLE DETAIL – LDD 028V

Dispatch	Hole ID	Sample	Material Type	Size	Stones	Carats	Sieve Size	Sale Size	Price Point	\$ Per Carat	Total \$	RDF Breakage Category	PJL Breakage Category	Comments	Colour	Blue UV
3	LDD_028V	S189	VK2	1-3mm	1	0,200	+9	+9	Mb 1	\$ 150,00	\$ 30,00	Unbroken	0		White	
3	LDD_028V	S189	VK2	1-3mm	1	0,040	+3	+3	Light (Mb)	\$ 55,00	\$ 2,20	Unbroken	0		White	
3	LDD_028V	S190	VK2	1-3mm	1	0,050	+3	+3	Light (Mb)	\$ 55,00	\$ 2,75	Unbroken	0	Flat dodec maccle	White	
3	LDD_028V	S191	VK2	3-8mm	1	0,415	+11	+11	Gem Z High	\$ 320,00	\$ 132,80	Unbroken	0	Strong Octahedron shape Frosted; Biased Resorption	H+	Light 002
3	LDD_028V	S191	VK2	1-3mm	1	0,135	+9	+9	Mb 2	\$ 110,00	\$ 14,85	Chipped	1		H+	Light 002
3	LDD_028V	S191	VK2	1-3mm	1	0,025	+3	+3	Light (Z)	\$ 60,00	\$ 1,50	Unbroken	0		White	
3	LDD_028V	S191	VK2	1-3mm	1	0,025	+1	+1	White (Z/Mb)	\$ 50,00	\$ 1,25	Unbroken	0		White	
3	LDD_028V	S191	VK2	1-3mm	1	0,020	+3	+3	Light (Cliv)	\$ 30,00	\$ 0,60	Chipped	CH		White	
3	LDD_028V	S192	VK2	3-8mm	1	0,315	+11	+11	Clivage	\$ 80,00	\$ 25,20	Unbroken	0	Spotted	D	Faint 001
3	LDD_028V	S192	VK2	1-3mm	1	0,050	+5	+5	Light (Flat Cliv)	\$ 40,00	\$ 2,00	Unbroken	0		D	Faint 001
3	LDD_028V	S193	VK2	1-3mm	1	0,200	+9	+9	Clivage	\$ 60,00	\$ 12,00	Unbroken	0		Grey	
3	LDD_028V	S193	VK2	1-3mm	1	0,040	+5	+5	Light (Cliv)	\$ 45,00	\$ 1,80	Unbroken	CH		White	
3	LDD_028V	S194	VK2	3-8mm	1	0,370	+11	+11	Clivage	\$ 80,00	\$ 29,60	Unbroken	0	Spotted	F+	Faint 001
3	LDD_028V	S194	VK2	1-3mm	1	0,065	+5	+5	Light (Cliv)	\$ 40,00	\$ 2,60	Chipped	1		Grey	
3	LDD_028V	S194	VK2	1-3mm	1	0,045	+5	+5	Light (Mb)	\$ 65,00	\$ 2,93	Chipped	CH		White	
3	LDD_028V	S195	VK2	1-3mm	1	0,070	+5	+5	Dark (Rej)	\$ 4,00	\$ 0,28	Unbroken	0	Rejection	Grey	
3	LDD_028V	S196	VK2	1-3mm	1	0,110	+5	+5	Dark	\$ 10,00	\$ 1,10	Chipped	1	Spotted	H	Light 004

TABLE 19: SAMPLE DETAIL FOR LDD_028V (PART A)

TSODILO RESOURCES LDD SAMPLES REPORT – DECEMBER 2018

2.12B SAMPLE DETAIL – LDD 028V

Dispatch	Hole ID	Sample	Material Type	Size	Stones	Carats	Sieve Size	Sale Size	Price Point	\$ Per Carat	Total \$	RDF Breakage Category	PJL Breakage Category	Comments	Colour	Blue UV
3	LDD_028V	S196	VK2	1-3mm	1	0,090	+7	+7	Clivage	\$ 60,00	\$ 5,40	Unbroken	0		Grey	
3	LDD_028V	S196	VK2	1-3mm	1	0,060	+5	+5	Light (Cliv)	\$ 40,00	\$ 2,40	Chipped IMP	CH		White	
3	LDD_028V	S198	VK2	3-8mm	1	0,325	+11	+11	Mb Gem High	\$ 220,00	\$ 71,50	Unbroken	0		I-	Light 002
3	LDD_028V	S198	VK2	1-3mm	1	0,085	+7	+7	Mb 2	\$ 80,00	\$ 6,80	Chipped	0		White	
3	LDD_028V	S198	VK2	1-3mm	1	0,075	+5	+5	Light (Mb)	\$ 65,00	\$ 4,88	Chipped	2		White	
3	LDD_028V	S198	VK2	1-3mm	1	0,060	+5	+5	Light (Mb)	\$ 65,00	\$ 3,90	Unbroken	0		White	
3	LDD_028V	S198	VK2	1-3mm	1	0,045	+5	+5	Light	\$ 65,00	\$ 2,93	Chipped	1		White	
3	LDD_028V	S199	VK2	1-3mm	1	0,155	+7	+7	Z Spot	\$ 125,00	\$ 19,38	Unbroken	0	Light Frosted Octa	I	Faint 001
3	LDD_028V	S199	VK2	1-3mm	1	0,150	+7	+7	Clivage Low	\$ 25,00	\$ 3,75	Unbroken	CH		D	Faint 001
3	LDD_028V	S199	VK2	1-3mm	1	0,125	+7	+7	Clivage	\$ 45,00	\$ 5,63	Unbroken	CH		F-	Light 002
3	LDD_028V	S200	VK2	3-8mm	1	1,120	+13	4 Grainer	K Col Colrd Gem	\$ 285,00	\$ 319,20	Unbroken	0	Very clear yellow Dodec elongated	I+	Light 002
3	LDD_028V	S200	VK2	1-3mm	1	0,030	+3	+3	Light (Cliv)	\$ 40,00	\$ 1,20	Unbroken	0		White	
3	LDD_028V	S201	VK2	1-3mm	1	0,245	+9	+9	Rej	\$ 10,00	\$ 2,45	Chipped	CH	Rejection High	H+	Light 002
3	LDD_028V	S201	VK2	1-3mm	1	0,100	+7	+7	Rej	\$ 8,00	\$ 0,80	Chipped	CH	Rejection High	G-	Light 002
3	LDD_028V	S201	VK2	1-3mm	1	0,090	+5	+5	Light	\$ 65,00	\$ 5,85	Chipped	0		White	
3	LDD_028V	S201	VK2	1-3mm	1	0,065	+5	+5	Light (Mb)	\$ 65,00	\$ 4,23	Unbroken	0		White	
3	LDD_028V	S201	VK2	1-3mm	1	0,030	+3	+3	Light (Z)	\$ 65,00	\$ 1,95	Unbroken	0		White	
3	LDD_028V	S201	VK2	1-3mm	1	0,025	+1	+1	Light (Mb)	\$ 40,00	\$ 1,00	Unbroken	0		White	
3	LDD_028V	S202	CB	3-8mm	1	0,540	+15	+11	Mb Gem 2	\$ 180,00	\$ 97,20	Unbroken	0	Triangular macle: garnets sulphide and silicates	D	None 000
3	LDD_028V	S202	CB	1-3mm	1	0,205	+9	+9	Mb Flat	\$ 120,00	\$ 24,60	Unbroken	0	Flat	H-	Faint 001
3	LDD_028V	S202	CB	1-3mm	1	0,070	+5	+5	Light (Mb)	\$ 65,00	\$ 4,55	Unbroken	0		White	
3	LDD_028V	S202	CB	1-3mm	1	0,060	+5	+5	Dark	\$ 12,00	\$ 0,72	Unbroken	0	Rejection	Grey	
3	LDD_028V	S202	CB	1-3mm	1	0,020	+1	+1	Dark	\$ 4,00	\$ 0,08	Unbroken	0	Rejection	Grey	
					Stones	Carats					\$ per carat	Total \$				
					40	5,945					\$ 143,62	\$ 853,83				

TABLE 20: SAMPLE DETAIL FOR LDD_028V (PART B)

TSODILO RESOURCES LDD SAMPLES REPORT – DECEMBER 2018

2.13 SAMPLE DETAIL – LDD 030V

Dispatch	Hole ID	Sample	Material Type	Size	Stones	Carats	Sieve Size	Sale Size	Price Point	\$ Per Carat	Total \$	RDF Breakage Category	PJL Breakage Category	Comments	Colour	Blue UV
2	LDD_030V	S180	VK3	1-3mm	1	0,230	+9	+9	Mb High	\$ 165,00	\$ 37,95	Unbroken	CH		H+	Faint 001
2	LDD_030V	S180	VK3	1-3mm	1	0,035	+3	+3	Light	\$ 15,00	\$ 0,53	Chipped	CH	Hackly	White	
2	LDD_030V	S180	VK3	1-3mm	1	0,020	+3	+3	Light	\$ 15,00	\$ 0,30	Light Breakage	0	Hackly	White	
3	LDD_030V	S177	VK3	1-3mm	1	0,085	+5	+5	Dark (Rej)	\$ 4,00	\$ 0,34	Unbroken	0	Grey Flat Rejection	F+	Faint 001
3	LDD_030V	S177	VK3	1-3mm	1	0,055	+5	+5	Light (Z)	\$ 80,00	\$ 4,40	Unbroken	0		White	
3	LDD_030V	S178	VK3	1-3mm	1	0,145	+9	+9	Cliv Low/Rej High	\$ 16,00	\$ 2,32	Unbroken	CH	Spotted/cracked	I+	Light 002
3	LDD_030V	S179	VK3	1-3mm	1	0,195	+9	+9	Rej High	\$ 12,00	\$ 2,34	Unbroken	0	Rejection High	K+	Light 003
3	LDD_030V	S182	VK3	1-3mm	1	0,030	+3	+3	Light (Mb)	\$ 45,00	\$ 1,35	Unbroken	0		White	
3	LDD_030V	S183	VK3	1-3mm	1	0,145	+9	+9	Mb 2	\$ 128,00	\$ 18,56	Unbroken	0		H-	Light 002
3	LDD_030V	S183	VK3	1-3mm	1	0,060	+7	+7	Cliv Mb Light	\$ 55,00	\$ 3,30	Unbroken	0	Flat Maccle	F-	Light 002
3	LDD_030V	S184	VK3	1-3mm	1	0,065	+5	+5	Light (Mb)	\$ 65,00	\$ 4,23	Unbroken	0		White	
3	LDD_030V	S185	VK2	3-8mm	1	0,415	+12	+11	Fancy Shape Mb	\$ 200,00	\$ 83,00	Unbroken	0	G+ colour Flat Dodec	H+	Faint 001
3	LDD_030V	S185	VK2	1-3mm	1	0,160	+7	+7	Clivage Coloured	\$ 35,00	\$ 5,60	Unbroken	0	Strong yellow colour, Strong yellow Fluor	G+	Strong 022
3	LDD_030V	S186	VK2	1-3mm	1	0,015	+1	+1	Light (Cliv)	\$ 30,00	\$ 0,45	Light Breakage	1		White	
					Stones	Carats					\$ per carat	Total \$				
					14	1,655					\$ 99,49	\$ 164,66				

TABLE 21: SAMPLE DETAIL FOR LDD_030V

TSODILO RESOURCES LDD SAMPLES REPORT – DECEMBER 2018

2.14 SAMPLE DETAIL – LDD 031V

Dispatch	Hole ID	Sample	Material Type	Size	Stones	Carats	Sieve Size	Sale Size	Price Point	\$ Per Carat	Total \$	RDF Breakage Category	PJL Breakage Category	Comments	Colour	Blue UV	
3	LDD_032V	S098	VK2	3-8mm	1	0,670	+12	+11	Clivage Mb High	\$ 85,00	\$ 56,95	Unbroken	0	White Macle Spotted	F+	Faint 001	
3	LDD_032V	S098	VK2	1-3mm	1	0,060	+5	+5	Light	\$ 65,00	\$ 3,90	Chipped	1		White		
3	LDD_032V	S099	VK2	1-3mm	1	0,205	+9	+9	Clivage	\$ 60,00	\$ 12,30	Unbroken	CH	Quite green	I+	Light 004	
3	LDD_032V	S099	VK2	1-3mm	1	0,060	+5	+5	Light	\$ 65,00	\$ 3,90	Unbroken	0		J	Faint 001	
3	LDD_032V	S100	VK2	1-3mm	1	0,125	+7	+7	Flats	\$ 85,00	\$ 10,63	Unbroken	0		H-	Light 002	
3	LDD_032V	S101	VK2	3-8mm	1	1,410	+15	6 Grainer	Z Spot	\$ 748,00	\$ 1 054,68	Unbroken	0	J colour Dodec	J-	Light 002	
3	LDD_032V	S101	VK2	1-3mm	1	0,090	+5	+5	Mb High Light	\$ 65,00	\$ 5,85	Unbroken	CH	Dodec	White		
3	LDD_032V	S101	VK2	1-3mm	1	0,045	+5	+5	Light	\$ 65,00	\$ 2,93	Unbroken	CH		White		
3	LDD_032V	S105_R	CB	1-3mm	1	0,120	+11	+11	Clivage Flats	\$ 65,00	\$ 7,80	Unbroken	CH	Top Light Brown	D	None 000	
					Stones	Carats						\$ per carat	Total \$				
					9	2,785						\$ 416,13	\$ 1 158,93				

TABLE 22: SAMPLE DETAIL FOR LDD_032V

2.15 SAMPLE DETAIL – LDD 031V

Dispatch	Hole ID	Sample	Material Type	Size	Stones	Carats	Sieve Size	Sale Size	Price Point	\$ Per Carat	Total \$	RDF Breakage Category	PJL Breakage Category	Comments	Colour	
3	NA	Lab sample_VK2	VK2	1-3mm	1	0,080	+7	+7	Mb Flat	\$ 85,00	\$ 6,80	Chipped	CH		White	
3	NA	Lab sample_VK2	VK2	1-3mm	1	0,070	+5	+5	Light	\$ 65,00	\$ 4,55	Chipped	1	Impact	White	
3	NA	Lab sample_VK3	VK3	1-3mm	1	0,040	+5	+5	Light	\$ 65,00	\$ 2,60	Heavy	2	Geologically Biased Crack	White	
					Stones	Carats						\$ per carat	Total \$			
					3	0,190						\$ 73,42	\$ 13,95			

TABLE 23: SAMPLE DETAIL FOR LAB SAMPLE VK2/3

TSODILO RESOURCES LDD SAMPLES REPORT – DECEMBER 2018

2.16A SAMPLE DETAIL – LDD 033V

Dispatch	Hole ID	Sample	Material Type	Size	Stones	Carats	Sieve Size	Sale Size	Price Point	\$ Per Carat	Total \$	RDF Breakage Category	PJL Breakage Category	Comments	Colour	Blue UV
1	LDD_033V	LDD_033V	VK2	3-8mm	1	0,785	+13	3 Grainer	Clivage High	\$ 130,00	\$ 102,05	Unbroken	0	Ream sample	D	Light 002
1	LDD_033V	S014	VKxxx	1-3mm	1	0,065	+5	+5	Light	\$ 20,00	\$ 1,30	Unbroken	0		White	
1	LDD_033V	S014	VKxxx	1-3mm	1	0,035	+3	+3	Dark	\$ 8,00	\$ 0,28	Unbroken	0		Grey	
1	LDD_033V	S015	VK2	3-8mm	1	0,395	+11	+11	Z Spot	\$ 274,00	\$ 108,23	Unbroken	0		DE	None 000
1	LDD_033V	S015	VK2	1-3mm	1	0,055	+5	+5	Light	\$ 20,00	\$ 1,10	Lightly Broken	0	Could have been +7	E	Faint 001
1	LDD_033V	S015	VK2	1-3mm	1	0,025	+3	+3	Dark	\$ 8,00	\$ 0,20	Lightly Broken	0	Could have been +5	E	Faint 001
1	LDD_033V	S016	VK2	3-8mm	1	0,700	+12	3 Grainer	Mb Spot	\$ 240,00	\$ 168,00	Unbroken	0		I+	Light 005
1	LDD_033V	S016	VK2	1-3mm	1	0,050	+5	+5	Light	\$ 20,00	\$ 1,00	Chipped	CH		White	
1	LDD_033V	S017	VK2	1-3mm	1	0,045	+5	+5	Light	\$ 20,00	\$ 0,90	Unbroken	0		White	
1	LDD_033V	S017	VK2	1-3mm	1	0,040	+5	+5	Light	\$ 20,00	\$ 0,80	Chipped	CH		White	
1	LDD_033V	S020	VK2	3-8mm	1	0,940	+15	4 Grainer	Clivage White	\$ 215,00	\$ 202,10	Unbroken	0		I	Faint 001
1	LDD_033V	S020	VK2	1-3mm	1	0,070	+5	+5	Light	\$ 20,00	\$ 1,40	Unbroken	CH		White	
1	LDD_033V	S020	VK2	1-3mm	1	0,035	+3	+3	Light	\$ 15,00	\$ 0,53	Unbroken	0		White	
1	LDD_033V	S021	VK2	3-8mm	1	0,705	+13	3 Grainer	Gem Mb	\$ 465,00	\$ 327,83	Unbroken	0	F+ Colour - Top Stone	F-	Light 002
1	LDD_033V	S022	VK2	1-3mm	1	0,100	+7	+7	Gem Mb	\$ 115,00	\$ 11,50	Unbroken	CH		White	
1	LDD_033V	S022	VK2	1-3mm	1	0,075	+7	+7	Gem Mb	\$ 115,00	\$ 8,63	Unbroken	0		White	
1	LDD_033V	S023	VK2	1-3mm	1	0,500	+11	+11	Clivage White	\$ 85,00	\$ 42,50	Unbroken	0	Light Brown	F	Faint 001
1	LDD_033V	S023	VK2	1-3mm	1	0,120	+7	+7	Z Spot	\$ 135,00	\$ 16,20	Unbroken	0		White	
1	LDD_033V	S023	VK2	1-3mm	1	0,025	+3	+3	Gem Mb	\$ 80,00	\$ 2,00	Chipped	0		White	
1	LDD_033V	S024	VK2	3-8mm	1	1,375	+15	5 Grainer	Mb Gem High	\$ 705,00	\$ 969,38	Unbroken	0	F= Colour top Stone	F	Light 002
1	LDD_033V	S024	VK2	1-3mm	1	0,020	+3	+3	Gem Mb	\$ 80,00	\$ 1,60	Chipped	0		White	
1	LDD_033V	S025	VK2	1-3mm	1	0,180	+9	+9	Rejection	\$ 10,00	\$ 1,80	Unbroken	0		D	Faint 001
1	LDD_033V	S025	VK2	1-3mm	1	0,045	+5	+5	Gem Mb	\$ 95,00	\$ 4,28	Chipped	CH		White	
1	LDD_033V	S027	VK2	1-3mm	1	0,080	+5	+5	Dark	\$ 12,00	\$ 0,96	Chipped	CH		Grey	
1	LDD_033V	S027	VK2	1-3mm	1	0,045	+3	+3	Gem Mb	\$ 80,00	\$ 3,60	Lightly Broken	2	Could have been +5	White	
1	LDD_033V	S027	VK2	1-3mm	1	0,030	+3	+3	Gem Mb	\$ 80,00	\$ 2,40	Unbroken	0		White	
1	LDD_033V	S028	VK2	1-3mm	1	0,295	+11	+11	Rejection	\$ 12,00	\$ 3,54	Unbroken	0		D	Faint 001

TABLE 24: SAMPLE DETAIL FOR LDD_033V (PART A)

TSODILO RESOURCES LDD SAMPLES REPORT – DECEMBER 2018

2.16B SAMPLE DETAIL – LDD 033V

Dispatch	Hole ID	Sample	Material Type	Size	Stones	Carats	Sieve Size	Sale Size	Price Point	\$ Per Carat	Total \$	RDF Breakage Category	PJL Breakage Category	Comments	Colour	Blue UV
1	LDD_033V	S028	VK2	1-3mm	1	0,220	+9	+9	Rejection	\$ 10,00	\$ 2,20	Chipped	3		H	Faint 001
1	LDD_033V	S028	VK2	3-8mm	1	0,200	+9	+9	Gem Mb High	\$ 165,00	\$ 33,00	Heavily Broken	3	Could Have been +11	F-	Faint 001
1	LDD_033V	S028	VK2	1-3mm	1	0,185	+9	+9	Gem Mb High	\$ 165,00	\$ 30,53	Lightly Broken	1	Could have been +11	D	None 000
1	LDD_033V	S028	VK2	1-3mm	1	0,055	+5	+5	Light	\$ 20,00	\$ 1,10	Fragment	4	Part of 0.20 ct stone	F	Light 003
1	LDD_033V	S028	VK2	1-3mm	1	0,050	+5	+5	Dark	\$ 12,00	\$ 0,60	Lightly Broken	0	Could have been +7	D	Light 002
1	LDD_033V	S028	VK2	1-3mm	1	0,045	+5	+5	Light	\$ 20,00	\$ 0,90	Lightly Broken	2		G+	Light 002
1	LDD_033V	S028	VK2	1-3mm	1	0,035	+3	+3	Dark	\$ 8,00	\$ 0,28	Unbroken	CH		D	Light 002
1	LDD_033V	S028	VK2	1-3mm	1	0,005	+1	+1	Dark	\$ 5,00	\$ 0,03	Unbroken	0		Grey	
1	LDD_033V	S029	VK2	3-8mm	1	0,425	+11	+11	Gem Mb High	\$ 235,00	\$ 99,88	Unbroken	0		DE	Faint 001
1	LDD_033V	S029	VK2	3-8mm	1	0,115	+7	+7	Clivage	\$ 40,00	\$ 4,60	Unbroken	1		F+	Faint 001
1	LDD_033V	S029	VK2	1-3mm	1	0,020	+3	+3	Light	\$ 15,00	\$ 0,30	Lightly Broken	0	Stays +3 after breaking	White	
1	LDD_033V	S029	VK2	1-3mm	1	0,015	+1	+1	Light	\$ 10,00	\$ 0,15	Unbroken	CH		White	
1	LDD_033V	S030	VK2	1-3mm	1	0,110	+7	+7	Clivage	\$ 40,00	\$ 4,40	Unbroken	0		Grey	
1	LDD_033V	S030	VK2	1-3mm	1	0,060	+5	+5	Dark	\$ 12,00	\$ 0,72	Unbroken	0		Grey	
1	LDD_033V	S030	VK2	1-3mm	1	0,035	+3	+3	Light	\$ 15,00	\$ 0,53	Unbroken	0		White	
1	LDD_033V	S031	VK2	3-8mm	1	0,180	+9	+9	Gem Mb High	\$ 208,00	\$ 37,44	Unbroken	0		D	None 000
1	LDD_033V	S031	VK2	1-3mm	1	0,075	+5	+5	Light	\$ 20,00	\$ 1,50	Chipped	0		White	
1	LDD_033V	S031	VK2	1-3mm	1	0,055	+5	+5	Light	\$ 20,00	\$ 1,10	Unbroken	0		White	
1	LDD_033V	S032	VK2	3-8mm	1	0,400	+11	+11	Gem Mb High	\$ 235,00	\$ 94,00	Unbroken	0		J	Light 002
1	LDD_033V	S032	VK2	1-3mm	1	0,105	+5	+5	Gem Mb	\$ 95,00	\$ 9,98	Chipped	0		White	
1	LDD_033V	S032	VK2	1-3mm	1	0,045	+5	+5	Light	\$ 20,00	\$ 0,90	Unbroken	0		White	
1	LDD_033V	S032	VK2	1-3mm	1	0,040	+5	+5	Light	\$ 20,00	\$ 0,80	Unbroken	0		J	Light 002
1	LDD_033V	S032	VK2	1-3mm	1	0,030	+3	+3	Light	\$ 15,00	\$ 0,45	Unbroken	0		White	
1	LDD_033V	S033	VK2	1-3mm	1	0,140	+7	+7	Gem Mb	\$ 115,00	\$ 16,10	Unbroken	0	Light Brown	DE	Faint 001
1	LDD_033V	S033	VK2	1-3mm	1	0,115	+5	+5	Light	\$ 20,00	\$ 2,30	Unbroken	0		H+	Light 003
1	LDD_033V	S033	VK2	1-3mm	1	0,030	+3	+3	Light	\$ 15,00	\$ 0,45	Unbroken	0		White	
1	LDD_033V	S035	VK2	1-3mm	1	0,140	+9	+9	Flats	\$ 140,00	\$ 19,60	Unbroken	0		D	Faint 001
2	LDD_033V	S014-S033	VK2	1-3mm	1	0,015	+1	+1	Light	\$ 10,00	\$ 0,15	Lightly Broken	1	Retreat	White	
3	LDD_033V	S034-S036	VK2	1-3mm	1	0,090	+5	+5	Light	\$ 65,00	\$ 5,85	Unbroken	0	Retreat	White	
3	LDD_033V	S034-S036	VK2	1-3mm	1	0,065	+5	+5	Dark	\$ 12,00	\$ 0,78	Chipped	2	Retreat	Grey	
					Stones	Carats				\$ per carat	Total \$					
					57	9,935				\$ 237,01	\$ 2 354,68					

TABLE 25: SAMPLE DETAIL FOR LDD_033V (PART B)

3.1 VALUATION PER SAMPLE

TSODILO RESOURCES					
LDD SAMPLES VALUATION SUMMARY					
SAMPLE	STONES	CARATS	\$ PER CARAT	SAMPLE \$ TOTAL	SUB SAMPLES
LDD_018V	27	4,225	\$ 108,27	\$ 457,45	17
LDD_019V	41	9,15	\$ 150,85	\$ 1 380,25	20
LDD_020V	78	12,365	\$ 201,49	\$ 2 491,37	17
LDD_021V	39	5,315	\$ 204,41	\$ 1 086,45	9
LDD_022V	15	1,925	\$ 81,89	\$ 157,64	7
LDD_023V	55	6,635	\$ 129,18	\$ 857,11	17
LDD_024V	48	7,19	\$ 150,21	\$ 1 080,04	16
LDD_025V	56	8,185	\$ 163,41	\$ 1 337,48	23
LDD_026V	18	2,325	\$ 162,78	\$ 378,47	10
LDD_027V	2	0,115	\$ 65,00	\$ 7,48	1
LDD_028V	40	5,945	\$ 143,62	\$ 853,83	13
LDD_030V	14	1,655	\$ 99,49	\$ 164,66	9
LDD_032V	9	2,785	\$ 416,13	\$ 1 158,93	5
LDD_033V	57	9,935	\$ 237,01	\$ 2 354,68	23
LAB VK2/3	3	0,190	\$ 73,42	\$ 13,95	2
TOTAL	502	77,940	\$ 176,80	\$ 13 779,75	189
SAMPLE	STONES	CARATS	\$ PER CARAT	SAMPLE \$ TOTAL	SUB SAMPLES

TABLE 26: VALUATION SUMMARY



IMAGE 5: A 0.78 CARAT WHITE DODEC WITH FINE PEPPERING OF SPOTS

3.2 NOTES ON THE VALUATION

The BK16 goods are very attractive mostly white goods with a mainly Dodecahedral population with many clean stones. Only a few small octahedra were noted and no cubes were seen. There are a few triangular maccles, however, these are also mostly in the smaller sizes. The population of lower quality Clivage and Rejection is very low compared to other Botswana Kimberlites. No Boart quality diamonds were noted in the study. There are very few Yellow diamonds and the brown population of all shades is very low, especially the darker browns.

While none of the larger stones are Type IIa, there are a few stones in the smaller sizes which are mostly all White stones.

While this is statistically a very small sample; the presence of such high colour clean high-yielding shapes bodes well for the future. The above-mentioned points are all reasons why these combined Samples have a price over \$175 per carat.

The author is of the opinion that the BK16 goods could well be around \$ 300 per carat; based on all the indicators seen in these LDD samples; specifically with regard to colour, shape and quality. The fact that Type IIa diamonds are also present and the lack of weaker Rejection and Boart goods makes a big statement. However, a larger sample would be required to prove this.

The most expensive stones are listed in Table 27 on the next page.



IMAGE 6: A 0.92 CARAT J COLOUR DODEC FROM LDD_019v – S143 SAMPLE

TSOIL0 RESOURCES LDD SAMPLES REPORT – DECEMBER 2018

3.3 NOTES ON THE VALUATION – MOST EXPENSIVE STONES

Dispatch	Hole ID	Sample	Material Type	Size	Carats	Sieve Size	Sale Size	Price Point	\$ Per Carat	Total \$	Comments	Colour	Blue UV
1	LDD_026V	S008	VK3	3-8mm	0,815	+13	3 Grainer	Mb Spot	\$ 375,00	\$ 305,63	G+ Colour	H	Light 002
1	LDD_033V	S015	VK2	3-8mm	0,395	+11	+11	Z Spot	\$ 274,00	\$ 108,23		DE	None 000
1	LDD_033V	S016	VK2	3-8mm	0,700	+12	3 Grainer	Mb Spot	\$ 240,00	\$ 168,00		I+	Light 005
1	LDD_033V	S021	VK2	3-8mm	0,705	+13	3 Grainer	Gem Mb	\$ 465,00	\$ 327,83	F+ Colour - Top Stone	F-	Light 002
1	LDD_033V	S024	VK2	3-8mm	1,375	+15	5 Grainer	Mb Gem High	\$ 705,00	\$ 969,38	F= Colour Top Stone	F	Light 002
2	LDD_020V	S053	VK3	3-8mm	1,535	+17	6 Grainer	Z Spot	\$ 755,00	\$ 1 158,93	Z11CRYSTAL	J-	Light 005
2	LDD_020V	S060	VK3	3-8mm	0,805	+13	3 Grainer	Mb Gem High	\$ 348,00	\$ 280,14		J-	Light 002
2	LDD_021V	S069	VK3	3-8mm	0,670	+13	3 Grainer	Mb Spot	\$ 250,00	\$ 167,50		I+	Light 003
3	LDD_019V	S135	VK3	3-8mm	1,360	+15	5 Grainer	Clivage High	\$ 255,00	\$ 346,80	White dodec; resorbed ruts	H	Light 002
3	LDD_019V	S142- S142	VK3	3-8mm	0,920	+13	4 Grainer	Coloured Gem 2 Spot	\$ 245,00	\$ 225,40	Yellow dodec YELLOW UV	K+	Light 002
3	LDD_019V	S144	VK3	3-8mm	0,755	+13	3 Grainer	MB White 2	\$ 308,00	\$ 232,54	H+ Colour, dodec maccle, nice round and flat on one side stone	H	Light 002
3	LDD_023V	S229	VKxxx	3-8mm	0,730	+13	3 Grainer	Mb Gem High	\$ 350,00	\$ 255,50	F+ colour irregular dodec	H-	Light 002
3	LDD_024V	S215	VK3	3-8mm	1,935	+17	8 Grainer	G+ Col Clivage High	\$ 350,00	\$ 677,25	Irregular Dodec Spotted (if clean = \$1,100 or \$1,200)	F+	Light 002
3	LDD_025V	S154	VK3	3-8mm	1,065	+13	4 Grainer	MB Spotted 1	\$ 288,00	\$ 306,72	Round dodec maccle	H+	Faint 001
3	LDD_025V	S164	VK3	3-8mm	0,745	+12	3 Grainer	Gem Z High	\$ 405,00	\$ 301,73	J colour dodec	I+	Faint 001
3	LDD_028V	S191	VK2	3-8mm	0,415	+11	+11	Gem Z High	\$ 320,00	\$ 132,80	Strong Octahedron shape Frosted Biased Resorption	H+	Light 002
3	LDD_028V	S200	VK2	3-8mm	1,120	+13	4 Grainer	K Col Colrd Gem	\$ 285,00	\$ 319,20	Slightly yellow very clear stone, elongated dodec	K+	Light 002
3	LDD_032V	S101	VK2	3-8mm	1,410	+15	6 Grainer	Z Spot	\$ 748,00	\$ 1 054,68	J colour Dodec faint fluorecense	J-	Light 002
MOST EXPENSIVE STONES IN SAMPLE					Carats	STONES ABOVE \$245 PER CARAT			\$ per carat	Total \$			
					17,455				\$ 420,41	\$ 7 338,24			

TABLE 27: MOST EXPENSIVE STONES IN THE LDD SAMPLES

4 BREAKAGE AND IMPACT - UNBROKEN

Dispatch	Hole ID	Sample	Material Type	Size	Stones	Carats	Sieve Size	Sale Size	Price Point	RDF Breakage Category	PJL Breakage Category
1	LDD_018V	S080	VK2	1-3mm	1	0,060	+5	+5	Dark	Unbroken	CH
1	LDD_020V	S037	VK3	1-3mm	1	0,125	+7	+7	Clivage White	Unbroken	0
1	LDD_020V	S037	VK3	3-8mm	1	0,035	+3	+3	Light	Unbroken	CH
1	LDD_020V	S038	VK3	1-3mm	1	0,140	+7	+7	Z Spot	Unbroken	0
1	LDD_020V	S038	VK3	1-3mm	1	0,015	+1	+1	Light	Unbroken	1
1	LDD_020V	S039	VK3	1-3mm	1	0,050	+5	+5	Light	Unbroken	1
1	LDD_020V	S040	VK3	3-8mm	1	0,200	+9	+9	Clivage	Unbroken	0
1	LDD_020V	S040	VK3	1-3mm	1	0,080	+5	+5	Gem Mb	Unbroken	0
1	LDD_020V	S040	VK3	1-3mm	1	0,045	+3	+3	Light	Unbroken	0
1	LDD_020V	S040	VK3	1-3mm	1	0,015	+1	+1	Dark	Unbroken	2
1	LDD_020V	S041	VK3	1-3mm	1	0,015	+1	+1	Light	Unbroken	CH
1	LDD_020V	S043	VK3	3-8mm	1	0,685	+12	3 Grainer	Clivage High	Unbroken	0
1	LDD_020V	S043	VK3	3-8mm	1	0,510	+11	+11	Gem Mb	Unbroken	0
1	LDD_020V	S043	VK3	1-3mm	1	0,095	+7	+7	Gem Mb	Unbroken	0
1	LDD_020V	S043	VK3	1-3mm	1	0,050	+3	+3	Gem Mb	Unbroken	0
1	LDD_020V	S044	VK3	3-8mm	1	0,955	+13	4 Grainer	Clivage High	Unbroken	0
1	LDD_022V	S113	VK3	1-3mm	1	0,055	+5	+5	Dark	Unbroken	0
1	LDD_022V	S113	VK3	1-3mm	1	0,025	+3	+3	Gem Mb	Unbroken	0
1	LDD_026V	S001+S002	VK3	1-3mm	1	0,030	+3	+3	Gem Z	Unbroken	0
1	LDD_026V	S005	VK3	1-3mm	1	0,320	+11	+11	Clivage White	Unbroken	0
1	LDD_026V	S006	VK3	1-3mm	1	0,065	+5	+5	Dark	Unbroken	CH
1	LDD_026V	S007	VK3	1-3mm	1	0,045	+5	+5	Dark	Unbroken	0
1	LDD_026V	S008	VK3	3-8mm	1	0,815	+13	3 Grainer	Mb Spot	Unbroken	0
1	LDD_026V	S008	VK3	1-3mm	1	0,115	+5	+5	Gem Mb	Unbroken	0
1	LDD_026V	S009	VK3	1-3mm	1	0,090	+7	+7	Clivage White	Unbroken	0
1	LDD_026V	S011	VK3	1-3mm	1	0,060	+5	+5	Light	Unbroken	0
1	LDD_026V	S012	VK3	1-3mm	1	0,115	+7	+7	Gem Mb	Unbroken	0
1	LDD_026V	S012	VK3	1-3mm	1	0,045	+5	+5	Light	Unbroken	0
1	LDD_026V	S013	VK3	1-3mm	1	0,045	+3	+3	Light	Unbroken	CH
1	LDD_026V	S013	VK3	1-3mm	1	0,025	+3	+3	Light	Unbroken	CH
1	LDD_033V	LDD_033V_REAM SAMPLE	VK2	3-8mm	1	0,785	+13	3 Grainer	Clivage High	Unbroken	0
1	LDD_033V	S014	VKxxx	1-3mm	1	0,065	+5	+5	Light	Unbroken	0
1	LDD_033V	S014	VKxxx	1-3mm	1	0,035	+3	+3	Dark	Unbroken	0
1	LDD_033V	S015	VK2	3-8mm	1	0,395	+11	+11	Z Spot	Unbroken	0
1	LDD_033V	S016	VK2	3-8mm	1	0,700	+12	3 Grainer	Mb Spot	Unbroken	0
1	LDD_033V	S017	VK2	1-3mm	1	0,045	+5	+5	Light	Unbroken	0
1	LDD_033V	S020	VK2	3-8mm	1	0,940	+15	4 Grainer	Clivage White	Unbroken	0
1	LDD_033V	S020	VK2	1-3mm	1	0,070	+5	+5	Light	Unbroken	CH
1	LDD_033V	S020	VK2	1-3mm	1	0,035	+3	+3	Light	Unbroken	0
1	LDD_033V	S021	VK2	3-8mm	1	0,705	+13	3 Grainer	Gem Mb	Unbroken	0
1	LDD_033V	S022	VK2	1-3mm	1	0,100	+7	+7	Gem Mb	Unbroken	CH
1	LDD_033V	S022	VK2	1-3mm	1	0,075	+7	+7	Gem Mb	Unbroken	0
1	LDD_033V	S023	VK2	1-3mm	1	0,500	+11	+11	Clivage White	Unbroken	0
1	LDD_033V	S023	VK2	1-3mm	1	0,120	+7	+7	Z Spot	Unbroken	0
1	LDD_033V	S024	VK2	3-8mm	1	1,375	+15	5 Grainer	Mb Gem High	Unbroken	0
1	LDD_033V	S025	VK2	1-3mm	1	0,180	+9	+9	Rejection	Unbroken	0
1	LDD_033V	S027	VK2	1-3mm	1	0,030	+3	+3	Gem Mb	Unbroken	0
1	LDD_033V	S028	VK2	1-3mm	1	0,295	+11	+11	Rejection	Unbroken	0
1	LDD_033V	S028	VK2	1-3mm	1	0,035	+3	+3	Dark	Unbroken	CH
1	LDD_033V	S028	VK2	1-3mm	1	0,005	+1	+1	Dark	Unbroken	0

TABLE 28: BREAKAGE TABLES – UNBROKEN (PART A)

4 BREAKAGE AND IMPACT - UNBROKEN

Dispatch	Hole ID	Sample	Material Type	Size	Stones	Carats	Sieve Size	Sale Size	Price Point	RDF Breakage Category	PJL Breakage Category
1	LDD_018V	S080	VK2	1-3mm	1	0,060	+5	+5	Dark	Unbroken	CH
1	LDD_020V	S037	VK3	1-3mm	1	0,125	+7	+7	Clivage White	Unbroken	0
1	LDD_020V	S037	VK3	3-8mm	1	0,035	+3	+3	Light	Unbroken	CH
1	LDD_020V	S038	VK3	1-3mm	1	0,140	+7	+7	Z Spot	Unbroken	0
1	LDD_020V	S038	VK3	1-3mm	1	0,015	+1	+1	Light	Unbroken	1
1	LDD_020V	S039	VK3	1-3mm	1	0,050	+5	+5	Light	Unbroken	1
1	LDD_020V	S040	VK3	3-8mm	1	0,200	+9	+9	Clivage	Unbroken	0
1	LDD_020V	S040	VK3	1-3mm	1	0,080	+5	+5	Gem Mb	Unbroken	0
1	LDD_020V	S040	VK3	1-3mm	1	0,045	+3	+3	Light	Unbroken	0
1	LDD_020V	S040	VK3	1-3mm	1	0,015	+1	+1	Dark	Unbroken	2
1	LDD_020V	S041	VK3	1-3mm	1	0,015	+1	+1	Light	Unbroken	CH
1	LDD_020V	S043	VK3	3-8mm	1	0,685	+12	3 Grainer	Clivage High	Unbroken	0
1	LDD_020V	S043	VK3	3-8mm	1	0,510	+11	+11	Gem Mb	Unbroken	0
1	LDD_020V	S043	VK3	1-3mm	1	0,095	+7	+7	Gem Mb	Unbroken	0
1	LDD_020V	S043	VK3	1-3mm	1	0,050	+3	+3	Gem Mb	Unbroken	0
1	LDD_020V	S044	VK3	3-8mm	1	0,955	+13	4 Grainer	Clivage High	Unbroken	0
1	LDD_022V	S113	VK3	1-3mm	1	0,055	+5	+5	Dark	Unbroken	0
1	LDD_022V	S113	VK3	1-3mm	1	0,025	+3	+3	Gem Mb	Unbroken	0
1	LDD_026V	S001+S002	VK3	1-3mm	1	0,030	+3	+3	Gem Z	Unbroken	0
1	LDD_026V	S005	VK3	1-3mm	1	0,320	+11	+11	Clivage White	Unbroken	0
1	LDD_026V	S006	VK3	1-3mm	1	0,065	+5	+5	Dark	Unbroken	CH
1	LDD_026V	S007	VK3	1-3mm	1	0,045	+5	+5	Dark	Unbroken	0
1	LDD_026V	S008	VK3	3-8mm	1	0,815	+13	3 Grainer	Mb Spot	Unbroken	0
1	LDD_026V	S008	VK3	1-3mm	1	0,115	+5	+5	Gem Mb	Unbroken	0
1	LDD_026V	S009	VK3	1-3mm	1	0,090	+7	+7	Clivage White	Unbroken	0
1	LDD_026V	S011	VK3	1-3mm	1	0,060	+5	+5	Light	Unbroken	0
1	LDD_026V	S012	VK3	1-3mm	1	0,115	+7	+7	Gem Mb	Unbroken	0
1	LDD_026V	S012	VK3	1-3mm	1	0,045	+5	+5	Light	Unbroken	0
1	LDD_026V	S013	VK3	1-3mm	1	0,045	+3	+3	Light	Unbroken	CH
1	LDD_026V	S013	VK3	1-3mm	1	0,025	+3	+3	Light	Unbroken	CH
1	LDD_033V	LDD_033V_REAM SAMPLE	VK2	3-8mm	1	0,785	+13	3 Grainer	Clivage High	Unbroken	0
1	LDD_033V	S014	VKxxx	1-3mm	1	0,065	+5	+5	Light	Unbroken	0
1	LDD_033V	S014	VKxxx	1-3mm	1	0,035	+3	+3	Dark	Unbroken	0
1	LDD_033V	S015	VK2	3-8mm	1	0,395	+11	+11	Z Spot	Unbroken	0
1	LDD_033V	S016	VK2	3-8mm	1	0,700	+12	3 Grainer	Mb Spot	Unbroken	0
1	LDD_033V	S017	VK2	1-3mm	1	0,045	+5	+5	Light	Unbroken	0
1	LDD_033V	S020	VK2	3-8mm	1	0,940	+15	4 Grainer	Clivage White	Unbroken	0
1	LDD_033V	S020	VK2	1-3mm	1	0,070	+5	+5	Light	Unbroken	CH
1	LDD_033V	S020	VK2	1-3mm	1	0,035	+3	+3	Light	Unbroken	0
1	LDD_033V	S021	VK2	3-8mm	1	0,705	+13	3 Grainer	Gem Mb	Unbroken	0
1	LDD_033V	S022	VK2	1-3mm	1	0,100	+7	+7	Gem Mb	Unbroken	CH
1	LDD_033V	S022	VK2	1-3mm	1	0,075	+7	+7	Gem Mb	Unbroken	0
1	LDD_033V	S023	VK2	1-3mm	1	0,500	+11	+11	Clivage White	Unbroken	0
1	LDD_033V	S023	VK2	1-3mm	1	0,120	+7	+7	Z Spot	Unbroken	0
1	LDD_033V	S024	VK2	3-8mm	1	1,375	+15	5 Grainer	Mb Gem High	Unbroken	0
1	LDD_033V	S025	VK2	1-3mm	1	0,180	+9	+9	Rejection	Unbroken	0
1	LDD_033V	S027	VK2	1-3mm	1	0,030	+3	+3	Gem Mb	Unbroken	0
1	LDD_033V	S028	VK2	1-3mm	1	0,295	+11	+11	Rejection	Unbroken	0
1	LDD_033V	S028	VK2	1-3mm	1	0,035	+3	+3	Dark	Unbroken	CH
1	LDD_033V	S028	VK2	1-3mm	1	0,005	+1	+1	Dark	Unbroken	0

TABLE 29: BREAKAGE TABLES – UNBROKEN (PART B)

4 BREAKAGE AND IMPACT - UNBROKEN

2	LDD_020V	S058	VK3	1-3mm	1	0,020	+1	+1	Gem	Unbroken	0
2	LDD_020V	S059	VK3	1-3mm	1	0,015	+1	+1	Light	Unbroken	CH
2	LDD_020V	S060	VK3	3-8mm	1	0,805	+13	3 Grainer	Mb Gem High	Unbroken	0
2	LDD_020V	S060	VK3	3-8mm	1	0,350	+11	+11	Blk Z	Unbroken	0
2	LDD_020V	S060	VK3	1-3mm	1	0,115	+5	+5	Gem Mb	Unbroken	0
2	LDD_020V	S061	VK3	1-3mm	1	0,070	+5	+5	Gem Z	Unbroken	CH
2	LDD_020V	S061	VK3	1-3mm	1	0,060	+3	+3	Light	Unbroken	0
2	LDD_020V	S063	VK3	1-3mm	1	0,070	+7	+7	Clivage White	Unbroken	4
2	LDD_020V	S063	VK3	1-3mm	1	0,070	+5	+5	Light	Unbroken	1
2	LDD_020V	S063	VK3	1-3mm	1	0,040	+3	+3	Dark	Unbroken	CH
2	LDD_020V	S063	VK3	1-3mm	1	0,015	+1	+1	Light	Unbroken	CH
2	LDD_020V	S064	VK3	1-3mm	1	0,050	+5	+5	Gam Mb	Unbroken	0
2	LDD_021V	S065	VK3	3-8mm	1	0,670	+13	3 Grainer	Clivage White	Unbroken	2
2	LDD_021V	S065	VK3	1-3mm	1	0,140	+7	+7	Clivage	Unbroken	3
2	LDD_021V	S065	VK3	1-3mm	1	0,050	+5	+5	Gem Mb	Unbroken	0
2	LDD_021V	S065	VK3	1-3mm	1	0,015	+3	+3	Gem Mb	Unbroken	0
2	LDD_021V	S066	VK3	3-8mm	1	0,965	+13	4 Gainer	Gem Z High	Unbroken	2
2	LDD_021V	S067	VKxxx	1-3mm	1	0,060	+5	+5	Gem Mb	Unbroken	CH
2	LDD_021V	S067	VKxxx	1-3mm	1	0,060	+5	+5	Light	Unbroken	CH
2	LDD_021V	S067	VKxxx	1-3mm	1	0,040	+3	+3	Dark	Unbroken	0
2	LDD_021V	S067	VKxxx	1-3mm	1	0,030	+3	+3	Dark	Unbroken	0
2	LDD_021V	S067	VKxxx	1-3mm	1	0,015	+1	+1	Dark	Unbroken	0
2	LDD_021V	S068	VKxxx	1-3mm	1	0,055	+5	+5	Light	Unbroken	1
2	LDD_021V	S068	VKxxx	1-3mm	1	0,050	+5	+5	Dark	Unbroken	CH
2	LDD_021V	S069	VK3	1-3mm	1	0,045	+3	+3	Light	Unbroken	0
2	LDD_021V	S069	VK3	1-3mm	1	0,040	+3	+3	Light	Unbroken	CH
2	LDD_021V	S069	VK3	1-3mm	1	0,030	+3	+3	Light	Unbroken	0
2	LDD_021V	S070	VK3	1-3mm	1	0,115	+5	+5	Dark	Unbroken	0
2	LDD_021V	S071	VK3	1-3mm	1	0,340	+11	+11	Gem Mb High	Unbroken	0
2	LDD_021V	S071	VK3	1-3mm	1	0,230	+9	+9	Clivage White	Unbroken	CH
2	LDD_021V	S071	VK3	1-3mm	1	0,120	+7	+7	Clivage	Unbroken	0
2	LDD_021V	S071	VK3	1-3mm	1	0,055	+5	+5	Light	Unbroken	0
2	LDD_021V	S071	VK3	1-3mm	1	0,040	+3	+3	Light	Unbroken	CH
2	LDD_021V	S072	VK3	1-3mm	1	0,090	+7	+7	Gem Mb	Unbroken	2
2	LDD_021V	S072	VK3	1-3mm	1	0,090	+7	+7	Gem Mb	Unbroken	CH
2	LDD_021V	S072	VK3	1-3mm	1	0,040	+5	+5	Dark	Unbroken	0
2	LDD_021V	S072	VK3	1-3mm	1	0,040	+3	+3	Dark	Unbroken	CH
2	LDD_021V	S073	VK3	1-3mm	1	0,100	+7	+7	Clivage	Unbroken	CH
2	LDD_021V	S073	VK3	1-3mm	1	0,035	+5	+5	Light	Unbroken	CH
2	LDD_023V	S232	VK2	1-3mm	1	0,065	+5	+5	Light	Unbroken	0
2	LDD_023V	S232	VK2	1-3mm	1	0,060	+5	+5	Light	Unbroken	0
2	LDD_023V	S240	VK3	1-3mm	1	0,185	+7	+7	Rejection	Unbroken	0
2	LDD_023V	S240	VK3	1-3mm	1	0,160	+7	+7	Clivage	Unbroken	0
2	LDD_023V	S240	VK3	1-3mm	1	0,065	+5	+5	Light	Unbroken	CH
2	LDD_030V	S180	VK3	1-3mm	1	0,230	+9	+9	Gem Mb High	Unbroken	CH
3	LDD_019V	S122	VK3	3-8mm	1	0,680	+13	3 Grainer	Clivage High 2	Unbroken	CH
3	LDD_019V	S122	VK3	1-3mm	1	0,045	+5	+5	Light	Unbroken	CH
3	LDD_019V	S123	VK3	1-3mm	1	0,360	+11	+11	Mb Spot	Unbroken	0
3	LDD_019V	S123	VK3	1-3mm	1	0,145	+7	+7	Gem Z High	Unbroken	0
3	LDD_019V	S123	VK3	1-3mm	1	0,040	+5	+5	Light	Unbroken	0
3	LDD_019V	S124	VK3	1-3mm	1	0,200	+9	+9	Mb Spot	Unbroken	0

TABLE 30: BREAKAGE TABLES – UNBROKEN (PART C)

TSODILO RESOURCES LDD SAMPLES REPORT – DECEMBER 2018

4 BREAKAGE AND IMPACT - UNBROKEN

3	LDD_019V	S124	VK3	1-3mm	1	0,180	+9	+9	Clivage Low	Unbroken	0
3	LDD_019V	S125	VK3	1-3mm	1	0,025	+5	+5	Light	Unbroken	0
3	LDD_019V	S126	VK3	1-3mm	1	0,200	+9	+9	Clivage	Unbroken	0
3	LDD_019V	S126	VK3	1-3mm	1	0,080	+5	+5	Light	Unbroken	0
3	LDD_019V	S127	VK3	3-8mm	1	0,455	+12	+11	Mb Gem 2	Unbroken	0
3	LDD_019V	S127	VK3	1-3mm	1	0,055	+5	+5	Light	Unbroken	0
3	LDD_019V	S128	VK3	1-3mm	1	0,175	+9	+9	Mb Gem 2	Unbroken	0
3	LDD_019V	S130	VK3	3-8mm	1	0,400	+11	+11	Mb Spot	Unbroken	CH
3	LDD_019V	S130	VK3	1-3mm	1	0,235	+9	+9	Clivage	Unbroken	0
3	LDD_019V	S130	VK3	1-3mm	1	0,105	+7	+7	Clivage	Unbroken	0
3	LDD_019V	S131	VK3	1-3mm	1	0,145	+9	+9	Clivage	Unbroken	0
3	LDD_019V	S133	VK3	1-3mm	1	0,275	+9	+9	Clivage	Unbroken	0
3	LDD_019V	S133	VK3	1-3mm	1	0,155	+9	+9	Mb Gem High	Unbroken	0
3	LDD_019V	S134	VK3	1-3mm	1	0,105	+9	+9	Mb Gem	Unbroken	0
3	LDD_019V	S135	VK3	1-3mm	1	0,050	+5	+5	Mb Gem High	Unbroken	0
3	LDD_019V	S137	VK3	1-3mm	1	0,085	+5	+5	Light (MB)	Unbroken	0
3	LDD_019V	S141	VK3	1-3mm	1	0,330	+11	+11	Spotted	Unbroken	0
3	LDD_019V	S141	VK3	1-3mm	1	0,180	+9	+9	Gem Mb High	Unbroken	0
3	LDD_019V	S141	VK3	1-3mm	1	0,035	+3	+3	Light	Unbroken	CH
3	LDD_019V	S142-S143	VK3	3-8mm	1	0,920	+13	4 Grainer	Coloured Gem	Unbroken	0
3	LDD_019V	S144	VK3	3-8mm	1	0,755	+13	3 Grainer	MB White 2	Unbroken	0
3	LDD_019V	S149	VK3	1-3mm	1	0,185	+9	+9	Mb Gem High	Unbroken	0
3	LDD_019V	S149	VK3	1-3mm	1	0,175	+9	+9	Coloured Mb	Unbroken	0
3	LDD_020V	S042_R	VK3	1-3mm	1	0,010	+1	+1	Light	Unbroken	0
3	LDD_020V	S050_R	VK3	3-8mm	1	0,310	+12	+11	Clivage Flats	Unbroken	0
3	LDD_022V	S110	VK3	1-3mm	1	0,215	+9	+9	Clivage	Unbroken	0
3	LDD_022V	S110	VK3	1-3mm	1	0,025	+3	+3	Light	Unbroken	0
3	LDD_022V	S111	VK3	1-3mm	1	0,090	+5	+5	Light	Unbroken	0
3	LDD_022V	S111_R	VK3	1-3mm	1	0,250	+9	+9	Clivage Mb TLB	Unbroken	0
3	LDD_022V	S114	VK3	1-3mm	1	0,180	+7	+7	Gem Z High	Unbroken	0
3	LDD_022V	S114	VK3	1-3mm	1	0,070	+5	+5	Dark	Unbroken	0
3	LDD_022V	S117	VK3	1-3mm	1	0,270	+9	+9	Z Spot 2	Unbroken	0
3	LDD_022V	S117	VK3	1-3mm	1	0,150	+7	+7	Mb (2)	Unbroken	0
3	LDD_022V	S118	VK3	1-3mm	1	0,175	+9	+9	MB Spot	Unbroken	0
3	LDD_022V	S118	VK3	1-3mm	1	0,025	+3	+3	Light	Unbroken	0
3	LDD_022V	S119	VK3	1-3mm	1	0,330	+9	+9	Clivage Low	Unbroken	CH
3	LDD_023V	S226	VKxxx	1-3mm	1	0,265	+9	+9	Clivage Z	Unbroken	0
3	LDD_023V	S226	VKxxx	1-3mm	1	0,070	+5	+5	Light (Mb)	Unbroken	0
3	LDD_023V	S227	VKxxx	1-3mm	1	0,025	+3	+3	Light	Unbroken	0
3	LDD_023V	S228	VKxxx	3-8mm	1	0,420	+11	+11	Mb Gem High	Unbroken	0
3	LDD_023V	S228	VKxxx	1-3mm	1	0,230	+7	+7	Fancy Shape	Unbroken	CH
3	LDD_023V	S228	VKxxx	1-3mm	1	0,210	+9	+9	Z Gem High	Unbroken	0
3	LDD_023V	S228	VKxxx	1-3mm	1	0,040	+5	+5	Light (Mb)	Unbroken	0
3	LDD_023V	S228	VKxxx	1-3mm	1	0,030	+3	+3	Light (Mb)	Unbroken	0
3	LDD_023V	S229	VKxxx	3-8mm	1	0,730	+13	3 Grainer	Mb Gem High	Unbroken	0
3	LDD_023V	S229	VKxxx	1-3mm	1	0,075	+5	+5	Light (Mb)	Unbroken	0
3	LDD_023V	S229	VKxxx	1-3mm	1	0,075	+5	+5	Dark (Cliv)	Unbroken	0
3	LDD_023V	S229	VKxxx	1-3mm	1	0,045	+3	+3	Light (Mb)	Unbroken	0
3	LDD_023V	S229	VKxxx	1-3mm	1	0,020	+1	+1	Light (Mb)	Unbroken	CH
3	LDD_023V	S230	VKxxx	1-3mm	1	0,205	+9	+9	Clivage	Unbroken	0
3	LDD_023V	S230	VKxxx	1-3mm	1	0,045	+3	+3	Light (Z)	Unbroken	0

TABLE 31: BREAKAGE TABLES – UNBROKEN (PART D)

TSODILO RESOURCES LDD SAMPLES REPORT – DECEMBER 2018

4 BREAKAGE AND IMPACT - UNBROKEN

3	LDD_023V	S230	VKxxx	1-3mm	1	0,015	+1	+1	Dark (Clivage)	Unbroken	0
3	LDD_023V	S231	VK2	1-3mm	1	0,305	+9	+9	Coloured Gem	Unbroken	0
3	LDD_023V	S231	VK2	1-3mm	1	0,175	+7	+7	Z Gem High	Unbroken	0
3	LDD_023V	S231	VK2	1-3mm	1	0,095	+5	+5	Light (Z)	Unbroken	0
3	LDD_023V	S233	VK2	1-3mm	1	0,030	+3	+3	Light (Mb)	Unbroken	0
3	LDD_023V	S234	VK2	1-3mm	1	0,030	+3	+3	Light	Unbroken	0
3	LDD_023V	S235	VK2	1-3mm	1	0,145	+9	+9	Clivage	Unbroken	CH
3	LDD_023V	S236	VK2	1-3mm	1	0,145	+7	+7	Z Spot	Unbroken	0
3	LDD_023V	S236	VK2	1-3mm	1	0,135	+7	+7	Mb Gem High	Unbroken	0
3	LDD_023V	S237	VK2	3-8mm	1	0,370	+11	+11	Z Spot Light	Unbroken	0
3	LDD_023V	S238	VK2	3-8mm	1	0,165	+7	+7	Rejection	Unbroken	CH
3	LDD_023V	S238	VK2	1-3mm	1	0,115	+7	+7	Mb Gem High	Unbroken	0
3	LDD_023V	S238	VK2	1-3mm	1	0,035	+5	+5	Light (Flat)	Unbroken	0
3	LDD_023V	S241	VK3	1-3mm	1	0,025	+3	+3	Dark (Rej Spot)	Unbroken	0
3	LDD_023V	S242	VK3	1-3mm	1	0,310	+11	+11	Mb Gem High	Unbroken	0
3	LDD_023V	S242	VK3	1-3mm	1	0,100	+5	+5	Light (Mb)	Unbroken	0
3	LDD_023V	S242	VK3	1-3mm	1	0,025	+3	+3	Light (Mb)	Unbroken	CH
3	LDD_023V	S243	VK3	1-3mm	1	0,065	+5	+5	Light (Clivage)	Unbroken	0
3	LDD_023V	S243	VK3	1-3mm	1	0,045	+3	+3	Light (Mb)	Unbroken	0
3	LDD_023V	S243	VK3	1-3mm	1	0,025	+3	+3	Light (Mb)	Unbroken	CH
3	LDD_024V	S204	VK3	1-3mm	1	0,225	+9	+9	Mb Flat	Unbroken	0
3	LDD_024V	S205	VK3	1-3mm	1	0,195	+9	+9	Clivage	Unbroken	1
3	LDD_024V	S205	VK3	1-3mm	1	0,020	+3	+3	Light (Cliv)	Unbroken	0
3	LDD_024V	S207	VK3	1-3mm	1	0,075	+5	+5	Light (Mb)	Unbroken	0
3	LDD_024V	S207	VK3	1-3mm	1	0,065	+5	+5	Light (Z)	Unbroken	0
3	LDD_024V	S207	VK3	1-3mm	1	0,060	+5	+5	Light (Cliv)	Unbroken	0
3	LDD_024V	S207	VK3	1-3mm	1	0,035	+5	+5	Light (Mb)	Unbroken	0
3	LDD_024V	S207	VK3	1-3mm	1	0,035	+3	+3	Light (Mb)	Unbroken	0
3	LDD_024V	S208	VK3	3-8mm	1	0,570	+11	+11	MB Spot	Unbroken	0
3	LDD_024V	S209	VK3	1-3mm	1	0,260	+9	+9	Brown Gem 2	Unbroken	0
3	LDD_024V	S209	VK3	1-3mm	1	0,045	+7	+7	Mb Flats	Unbroken	0
3	LDD_024V	S209	VK3	1-3mm	1	0,025	+1	+1	Light (Z)	Unbroken	0
3	LDD_024V	S209	VK3	1-3mm	1	0,025	+1	+1	Light Mb	Unbroken	0
3	LDD_024V	S210	VK3	1-3mm	1	0,255	+9	+9	Mb Spot	Unbroken	0
3	LDD_024V	S210	VK3	1-3mm	1	0,045	+3	+3	Light (Z)	Unbroken	0
3	LDD_024V	S210	VK3	1-3mm	1	0,020	+1	+1	Light (Z)	Unbroken	0
3	LDD_024V	S211	VK3	3-8mm	1	0,350	+13	+11	Mb Flat	Unbroken	0
3	LDD_024V	S211	VK3	1-3mm	1	0,145	+5	+5	Light (Clivage)	Unbroken	0
3	LDD_024V	S211	VK3	1-3mm	1	0,100	+7	+7	Mb Gem	Unbroken	0
3	LDD_024V	S211	VK3	1-3mm	1	0,060	+5	+5	Light (Mb)	Unbroken	0
3	LDD_024V	S213	VK3	1-3mm	1	0,030	+1	+1	Light (Cliv)	Unbroken	0
3	LDD_024V	S215	VK3	3-8mm	1	1,935	+17	8 Grainer	Clivage	Unbroken	CH
3	LDD_024V	S216	VK3	1-3mm	1	0,255	+9	+9	Clivage	Unbroken	0
3	LDD_024V	S217	VK3	1-3mm	1	0,330	+9	+9	Z Spot	Unbroken	0
3	LDD_024V	S217	VK3	1-3mm	1	0,145	+7	+7	Mb Spot	Unbroken	0
3	LDD_024V	S217	VK3	1-3mm	1	0,055	+5	+5	Light	Unbroken	0
3	LDD_024V	S218	VK3	1-3mm	1	0,135	+5	+5	Light (Cliv)	Unbroken	0
3	LDD_024V	S219	VK3	3-8mm	1	0,270	+11	+11	Clivage Low	Unbroken	0
3	LDD_024V	S219	VK3	1-3mm	1	0,050	+3	+3	Light (Mb)	Unbroken	0
3	LDD_024V	S220	VK3	1-3mm	1	0,085	+5	+5	Light (Mb)	Unbroken	0
3	LDD_024V	S220	VK3	1-3mm	1	0,045	+3	+3	Light (Z)	Unbroken	0

TABLE 32: BREAKAGE TABLES – UNBROKEN (PART E)

TSODILO RESOURCES LDD SAMPLES REPORT – DECEMBER 2018

4 BREAKAGE AND IMPACT - UNBROKEN

3	LDD_024V	S220	VK3	1-3mm	1	0,040	+3	+3	Light (Cliv)	Unbroken	0
3	LDD_024V	S223	VK2	1-3mm	1	0,135	+7	+7	Mb Gem High	Unbroken	0
3	LDD_024V	S223	VK2	1-3mm	1	0,075	+5	+5	Light (Mb)	Unbroken	0
3	LDD_024V	S223	VK2	1-3mm	1	0,050	+3	+3	Light (Z)	Unbroken	0
3	LDD_024V	S223	VK2	1-3mm	1	0,050	+5	+5	Light (Z)	Unbroken	0
3	LDD_024V	S223	VK2	1-3mm	1	0,035	+3	+3	Light (Mb)	Unbroken	0
3	LDD_025V	S150	VK3	1-3mm	1	0,040	+5	+5	Light	Unbroken	0
3	LDD_025V	S150	VK3	1-3mm	1	0,015	+1	+1	Light	Unbroken	0
3	LDD_025V	S151	VK3	3-8mm	1	0,510	+12	+11	Fancy Snake	Unbroken	0
3	LDD_025V	S151	VK3	1-3mm	1	0,170	+7	+7	Clivage High	Unbroken	0
3	LDD_025V	S151	VK3	1-3mm	1	0,075	+5	+5	Light (Mb)	Unbroken	0
3	LDD_025V	S152	VK3	1-3mm	1	0,200	+7	+7	Mb Gem High	Unbroken	0
3	LDD_025V	S154	VK3	3-8mm	1	1,065	+13	4 Grainer	MB Spotted 1	Unbroken	0
3	LDD_025V	S156	VK3	3-8mm	1	0,545	+12	+11	Mb Spotted	Unbroken	0
3	LDD_025V	S156	VK3	1-3mm	1	0,250	+11	+11	Mb Gem High	Unbroken	0
3	LDD_025V	S156	VK3	1-3mm	1	0,060	+3	+3	Light (Mb)	Unbroken	0
3	LDD_025V	S157	VK3	1-3mm	1	0,200	+9	+9	Mb Gem High	Unbroken	0
3	LDD_025V	S157	VK3	1-3mm	1	0,055	+5	+5	Light	Unbroken	0
3	LDD_025V	S157	VK3	1-3mm	1	0,045	+5	+5	Light	Unbroken	0
3	LDD_025V	S158	VK3	1-3mm	1	0,200	+9	+9	Z Gem High	Unbroken	0
3	LDD_025V	S158	VK3	1-3mm	1	0,080	+5	+5	Light (Cliv)	Unbroken	0
3	LDD_025V	S158	VK3	1-3mm	1	0,065	+5	+5	Z Light	Unbroken	0
3	LDD_025V	S158	VK3	1-3mm	1	0,065	+5	+5	Light	Unbroken	0
3	LDD_025V	S158	VK3	1-3mm	1	0,030	+3	+3	Light	Unbroken	0
3	LDD_025V	S161	VK3	3-8mm	1	0,645	+13	+11	MB Gem 2	Unbroken	0
3	LDD_025V	S161	VK3	1-3mm	1	0,105	+5	+5	Dark (Grey)	Unbroken	0
3	LDD_025V	S162	VK3	1-3mm	1	0,045	+5	+5	Light (Cliv)	Unbroken	0
3	LDD_025V	S163	VK3	1-3mm	1	0,140	+7	+7	Mb Flat	Unbroken	0
3	LDD_025V	S163	VK3	1-3mm	1	0,015	+3	+3	Light (Mb)	Unbroken	0
3	LDD_025V	S164	VK3	3-8mm	1	0,745	+12	3 Grainer	Gem Z High	Unbroken	0
3	LDD_025V	S164	VK3	3-8mm	1	0,455	+11	+11	White Clivage	Unbroken	0
3	LDD_025V	S164	VK3	1-3mm	1	0,190	+9	+9	Z Spot Light	Unbroken	0
3	LDD_025V	S164	VK3	1-3mm	1	0,075	+5	+5	Light (Cliv)	Unbroken	0
3	LDD_025V	S164	VK3	1-3mm	1	0,040	+3	+3	Light (Cliv)	Unbroken	0
3	LDD_025V	S164	VK3	1-3mm	1	0,020	+1	+1	Light (Cliv)	Unbroken	0
3	LDD_025V	S165	VK3	1-3mm	1	0,170	+9	+9	Mb Gem High	Unbroken	0
3	LDD_025V	S165	VK3	1-3mm	1	0,080	+5	+5	Dark (Grey)	Unbroken	0
3	LDD_025V	S165	VK3	1-3mm	1	0,045	+5	+5	Light (Mb Flat)	Unbroken	0
3	LDD_025V	S166	VK3	1-3mm	1	0,110	+7	+7	Mb Gem High	Unbroken	0
3	LDD_025V	S167	VK3	1-3mm	1	0,050	+5	+5	Light (Clivage)	Unbroken	0
3	LDD_025V	S168	VK3	1-3mm	1	0,035	+3	+3	Light (Mb)	Unbroken	0
3	LDD_025V	S169	VK3	1-3mm	1	0,230	+9	+9	Mb Gem High	Unbroken	0
3	LDD_025V	S169	VK3	1-3mm	1	0,120	+7	+7	Clivage	Unbroken	0
3	LDD_025V	S170	VK3	1-3mm	1	0,135	+7	+7	Mb Gem High	Unbroken	0
3	LDD_025V	S171	VK3	1-3mm	1	0,060	+3	+3	Light	Unbroken	0
3	LDD_025V	S172	VK3	1-3mm	1	0,035	+9	+9	Clivage	Unbroken	0
3	LDD_025V	S175	VK3	1-3mm	1	0,090	+5	+5	Light Z	Unbroken	0
3	LDD_025V	S175	VK3	1-3mm	1	0,045	+3	+3	Light (Clivage)	Unbroken	CH
3	LDD_025V	S175	VK3	1-3mm	1	0,040	+3	+3	Light Mb	Unbroken	CH
3	LDD_027V	S106	VK2	1-3mm	1	0,045	+5	+5	Light	Unbroken	0

TABLE 33: BREAKAGE TABLES – UNBROKEN (PART F)

4 BREAKAGE AND IMPACT - UNBROKEN

3	LDD_028V	S189	VK2	1-3mm	1	0,200	+9	+9	Mb 1	Unbroken	0
3	LDD_028V	S191	VK2	3-8mm	1	0,415	+11	+11	Gem Z High	Unbroken	0
3	LDD_028V	S191	VK2	1-3mm	1	0,025	+3	+3	Light (Z)	Unbroken	0
3	LDD_028V	S191	VK2	1-3mm	1	0,025	+1	+1	White (Z/Mb)	Unbroken	0
3	LDD_028V	S192	VK2	3-8mm	1	0,315	+11	+11	Clivage	Unbroken	0
3	LDD_028V	S192	VK2	1-3mm	1	0,050	+5	+5	Light (Flat Cliv)	Unbroken	0
3	LDD_028V	S193	VK2	1-3mm	1	0,200	+9	+9	Clivage	Unbroken	0
3	LDD_028V	S193	VK2	1-3mm	1	0,040	+5	+5	Light (Cliv)	Unbroken	CH
3	LDD_028V	S194	VK2	3-8mm	1	0,370	+11	+11	Clivage	Unbroken	0
3	LDD_028V	S195	VK2	1-3mm	1	0,070	+5	+5	Dark (Rej)	Unbroken	0
3	LDD_028V	S196	VK2	1-3mm	1	0,090	+7	+7	Clivage	Unbroken	0
3	LDD_028V	S198	VK2	3-8mm	1	0,325	+11	+11	Mb Gem High	Unbroken	0
3	LDD_028V	S198	VK2	1-3mm	1	0,060	+5	+5	Light (Mb)	Unbroken	0
3	LDD_028V	S199	VK2	1-3mm	1	0,155	+7	+7	Z Spot	Unbroken	0
3	LDD_028V	S199	VK2	1-3mm	1	0,150	+7	+7	Clivage Low	Unbroken	CH
3	LDD_028V	S199	VK2	1-3mm	1	0,125	+7	+7	Clivage	Unbroken	CH
3	LDD_028V	S200	VK2	3-8mm	1	1,120	+13	4 Grainer	Light (Cliv)	Unbroken	0
3	LDD_028V	S200	VK2	1-3mm	1	0,030	+3	+3	Light (Cliv)	Unbroken	0
3	LDD_028V	S201	VK2	1-3mm	1	0,065	+5	+5	Light (Mb)	Unbroken	0
3	LDD_028V	S201	VK2	1-3mm	1	0,030	+3	+3	Light (Z)	Unbroken	0
3	LDD_028V	S201	VK2	1-3mm	1	0,025	+1	+1	Light (Mb)	Unbroken	0
3	LDD_028V	S202	CB	3-8mm	1	0,540	+15	+11	Mb Gem 2	Unbroken	0
3	LDD_028V	S202	CB	1-3mm	1	0,205	+9	+9	Mb Flat	Unbroken	0
3	LDD_028V	S202	CB	1-3mm	1	0,070	+5	+5	Light (Mb)	Unbroken	0
3	LDD_028V	S202	CB	1-3mm	1	0,060	+5	+5	Dark	Unbroken	0
3	LDD_028V	S202	CB	1-3mm	1	0,020	+1	+1	Dark	Unbroken	0
3	LDD_030V	S177	VK3	1-3mm	1	0,085	+5	+5	Dark (Rej)	Unbroken	0
3	LDD_030V	S177	VK3	1-3mm	1	0,055	+5	+5	Light (Z)	Unbroken	0
3	LDD_030V	S178	VK3	1-3mm	1	0,145	+9	+9	Clivage	Unbroken	CH
3	LDD_030V	S179	VK3	1-3mm	1	0,195	+9	+9	Rej High	Unbroken	0
3	LDD_030V	S182	VK3	1-3mm	1	0,030	+3	+3	Light (Mb)	Unbroken	0
3	LDD_030V	S183	VK3	1-3mm	1	0,145	+9	+9	Mb 2	Unbroken	0
3	LDD_030V	S183	VK3	1-3mm	1	0,060	+7	+7	Cliv Mb Light	Unbroken	0
3	LDD_030V	S184	VK3	1-3mm	1	0,065	+5	+5	Light (Mb)	Unbroken	0
3	LDD_030V	S185	VK2	3-8mm	1	0,415	+12	+11	Fancy snape	Unbroken	0
3	LDD_030V	S185	VK2	1-3mm	1	0,160	+7	+7	Clivage	Unbroken	0
3	LDD_032V	S098	VK2	3-8mm	1	0,670	+12	+11	Clivage	Unbroken	0
3	LDD_032V	S099	VK2	1-3mm	1	0,205	+9	+9	Clivage	Unbroken	CH
3	LDD_032V	S099	VK2	1-3mm	1	0,060	+5	+5	Light	Unbroken	0
3	LDD_032V	S100	VK2	1-3mm	1	0,125	+7	+7	Flats	Unbroken	0
3	LDD_032V	S101	VK2	3-8mm	1	1,410	+15	6 Grainer	Z Spot	Unbroken	0
3	LDD_032V	S101	VK2	1-3mm	1	0,090	+5	+5	Mb High Light	Unbroken	CH
3	LDD_032V	S101	VK2	1-3mm	1	0,045	+5	+5	Light	Unbroken	CH
3	LDD_032V	S105_R	CB	1-3mm	1	0,120	+11	+11	Clivage Flats	Unbroken	CH
3	LDD_033V	S034-S036 R	VK2	1-3mm	1	0,090	+5	+5	Light	Unbroken	0
3	LDD_019V	S135	VK3	3-8mm	1	1,360	+15	5 Grainer	Clivage High	Unbroken	CH
3	LDD_028V	S189	VK2	1-3mm	1	0,040	+3	+3	Light (Mb)	Unbroken	0
3	LDD_028V	S190	VK2	1-3mm	1	0,050	+3	+3	Light (Mb)	Unbroken	0

TABLE 34: BREAKAGE TABLES – UNBROKEN (PART G)

TSODILO RESOURCES LDD SAMPLES REPORT – DECEMBER 2018

4 BREAKAGE AND IMPACT - CHIPPED

1	LDD_020V	S041	VK3	1-3mm	1	0,035	+3	+3	Light	Chipped	1
1	LDD_020V	S042	VK3	1-3mm	1	0,050	+5	+5	Gem Mb	Chipped	0
1	LDD_020V	S055	VK3	3-8mm	1	0,550	+12	+11	Rejection	Chipped	CH
1	LDD_020V	S055	VK3	3-8mm	1	0,410	+11	+11	Clivage White	Chipped	2
1	LDD_020V	S055	VK3	3-8mm	1	0,255	+11	+11	Clivage White	Chipped	CH
1	LDD_026V	S008	VK3	1-3mm	1	0,065	+3	+3	Gem Z	Chipped	0
1	LDD_026V	S013	VK3	3-8mm	1	0,390	+12	+11	Rejection	Chipped	2
1	LDD_033V	S016	VK2	1-3mm	1	0,050	+5	+5	Light	Chipped	CH
1	LDD_033V	S017	VK2	1-3mm	1	0,040	+5	+5	Light	Chipped	CH
1	LDD_033V	S023	VK2	1-3mm	1	0,025	+3	+3	Gem Mb	Chipped	0
1	LDD_033V	S024	VK2	1-3mm	1	0,020	+3	+3	Gem Mb	Chipped	0
1	LDD_033V	S025	VK2	1-3mm	1	0,045	+5	+5	Gem Mb	Chipped	CH
1	LDD_033V	S027	VK2	1-3mm	1	0,080	+5	+5	Dark	Chipped	CH
1	LDD_033V	S028	VK2	1-3mm	1	0,220	+9	+9	Rejection	Chipped	3
1	LDD_033V	S031	VK2	1-3mm	1	0,075	+5	+5	Light	Chipped	0
1	LDD_033V	S032	VK2	1-3mm	1	0,105	+5	+5	Gem Mb	Chipped	0
2	LDD_018V	S079	VK2	1-3mm	1	0,220	+9	+9	Brown Clivage	Chipped	1
2	LDD_019V	S136	VK3	1-3mm	1	0,080	+7	+7	Clivage	Chipped	CH
2	LDD_019V	S136	VK3	1-3mm	1	0,035	+5	+5	Light	Chipped	CH
2	LDD_020V	S049	VK3	1-3mm	1	0,010	+1	+1	Light	Chipped	0
2	LDD_020V	S052	VK3	1-3mm	1	0,170	+7	+7	Mb	Chipped	0
2	LDD_020V	S057	VK3	3-8mm	1	0,255	+11	+11	Clivage Flats	Chipped	0
2	LDD_020V	S057	VK3	1-3mm	1	0,025	+3	+3	Dark	Chipped	CH
2	LDD_020V	S062	VK3	3-8mm	1	0,590	+17	+11	Clivage Flats	Chipped	CH
2	LDD_020V	S063	VK3	1-3mm	1	0,175	+7	+7	Clivage White	Chipped	CH
2	LDD_021V	S065	VK3	1-3mm	1	0,110	+7	+7	Gem Mb	Chipped	CH
2	LDD_021V	S067	VKxxx	1-3mm	1	0,035	+5	+5	Light	Chipped	CH
2	LDD_021V	S069	VK3	3-8mm	1	0,670	+13	3 Grainer	Mb Spot	Chipped	1
2	LDD_021V	S072	VK3	1-3mm	1	0,075	+7	+7	Clivage	Chipped	0
2	LDD_021V	S073	VK3	1-3mm	1	0,020	+3	+3	Light	Chipped	4
2	LDD_023V	S240	VK3	3-8mm	1	0,325	+11	+11	Clivage White	Chipped	2
2	LDD_026V	S001-	VK3	1-3mm	1	0,030	+3	+3	Dark	Chipped	0
2	LDD_026V	S001-	VK3	1-3mm	1	0,025	+5	+5	Dark	Chipped	CH
2	LDD_030V	S180	VK3	1-3mm	1	0,035	+3	+3	Light	Chipped	CH
3	LDD_018V	S087+S088_R	VK2	1-3mm	1	0,060	+5	+5	Dark	Chipped	1
3	LDD_018V	S095+S096	VK2	1-3mm	1	0,115	+7	+7	Clivage	Chipped	1
3	LDD_019V	S121	VK3	1-3mm	1	0,075	+5	+5	Light	Chipped	CH
3	LDD_019V	S121	VK3	1-3mm	1	0,030	+3	+3	Light	Chipped	CH
3	LDD_019V	S130	VK3	1-3mm	1	0,115	+9	+9	Clivage Flats	Chipped	CH
3	LDD_019V	S138	VK3	3-8mm	1	0,345	+11	+11	Rejection	Chipped	1
3	LDD_019V	S142-S143	VK3	1-3mm	1	0,125	+9	+9	Clivage	Chipped	2
3	LDD_019V	S144	VK3	1-3mm	1	0,040	+5	+5	Light (MB)	Chipped	CH
3	LDD_022V	S111	VK3	1-3mm	1	0,030	+3	+3	Light	Chipped	CH
3	LDD_023V	S235	VK2	1-3mm	1	0,020	+3	+3	Light (Mb)	Chipped	CH
3	LDD_023V	S237	VK2	1-3mm	1	0,055	+3	+3	Light (Cliv)	Chipped	2
3	LDD_023V	S243	VK3	1-3mm	1	0,020	+3	+3	Light (Mb)	Chipped	1
3	LDD_024V	S207	VK3	1-3mm	1	0,050	+5	+5	Light (Cliv)	Chipped	1

TABLE 35: BREAKAGE TABLES – CHIPPED (PART A)

TSODILO RESOURCES LDD SAMPLES REPORT – DECEMBER 2018

4 BREAKAGE AND IMPACT - CHIPPED

3	LDD_024V	S208	VK3	1-3mm	1	0,110	+7	+7	Clivage	Chipped	1
3	LDD_024V	S209	VK3	1-3mm	1	0,025	+1	+1	Light (Cliv)	Chipped	CH
3	LDD_024V	S210	VK3	1-3mm	1	0,160	+9	+9	Rejection	Chipped	1
3	LDD_024V	S211	VK3	1-3mm	1	0,145	+7	+7	Brown Clivage	Chipped	1
3	LDD_024V	S212	VK3	1-3mm	1	0,140	+7	+7	Clivage	Chipped	CH
3	LDD_024V	S215	VK3	1-3mm	1	0,050	+1	+1	Light (Mb)	Chipped	CH
3	LDD_024V	S219	VK3	1-3mm	1	0,045	+3	+3	Light (Mb)	Chipped	CH
3	LDD_024V	S220	VK3	1-3mm	1	0,075	+5	+5	Light (Mb)	Chipped	1
3	LDD_025V	S163	VK3	1-3mm	1	0,055	+5	+5	Light (Mb)	Chipped	1
3	LDD_025V	S164	VK3	1-3mm	1	0,140	+9	+9	Rej	Chipped	CH
3	LDD_025V	S174	VK3	1-3mm	1	0,065	+7	+7	Clivage	Chipped	1
3	LDD_025V	S175	VK3	1-3mm	1	0,060	+3	+3	Dark (Rej)	Chipped	1
3	LDD_025V	S175	VK3	1-3mm	1	0,015	+1	+3	Dark	Chipped	CH
3	LDD_025V	S176	VK3	1-3mm	1	0,080	+7	+7	Clivage	Chipped	CH
3	LDD_025V	S176	VK3	1-3mm	1	0,020	+5	+5	Light (Flat)	Chipped	CH
3	LDD_025V	S176	VK3	1-3mm	1	0,015	+3	+3	Dark (Grey)	Chipped	CH
3	LDD_025V	S176	VK3	1-3mm	1	0,015	+1	+1	Dark (Grey)	Chipped	1
3	LDD_027V	S106	VK2	1-3mm	1	0,070	+5	+5	Light	Chipped	1
3	LDD_028V	S191	VK2	1-3mm	1	0,135	+9	+9	Mb 2	Chipped	1
3	LDD_028V	S191	VK2	1-3mm	1	0,020	+3	+3	Light (Cliv)	Chipped	CH
3	LDD_028V	S194	VK2	1-3mm	1	0,065	+5	+5	Light (Cliv)	Chipped	1
3	LDD_028V	S196	VK2	1-3mm	1	0,110	+5	+5	Dark	Chipped	1
3	LDD_028V	S198	VK2	1-3mm	1	0,075	+5	+5	Light (Mb)	Chipped	2
3	LDD_028V	S198	VK2	1-3mm	1	0,045	+5	+5	Light	Chipped	1
3	LDD_028V	S201	VK2	1-3mm	1	0,245	+9	+9	Rej	Chipped	CH
3	LDD_028V	S201	VK2	1-3mm	1	0,100	+7	+7	Rej	Chipped	CH
3	LDD_028V	S201	VK2	1-3mm	1	0,090	+5	+5	Light	Chipped	0
3	LDD_032V	S098	VK2	1-3mm	1	0,060	+5	+5	Light	Chipped	1
3	LDD_033V	S034-S036_R	VK2	1-3mm	1	0,065	+5	+5	Dark	Chipped	2
3	NA	lab sample_VK2	VK2	1-3mm	1	0,080	+7	+7	Mb Flat	Chipped	CH
3	NA	lab sample_VK2	VK2	1-3mm	1	0,070	+5	+5	Light	Chipped	1
3	LDD_023V	S242	VK3	1-3mm	1	0,110	+7	+7	Clivage	Chipped	CH
3	LDD_028V	S194	VK2	1-3mm	1	0,045	+5	+5	Light (Mb)	Chipped	CH
3	LDD_018V	S095+S096	VK2	1-3mm	1	0,095	+5	+5	Light	Chipped	1
3	LDD_019V	S142-S143	VK3	1-3mm	1	0,065	+5	+5	Light	Chipped	CH
3	LDD_019V	S142-S143	VK3	1-3mm	1	0,065	+5	+5	Light	Chipped	CH
3	LDD_024V	S207	VK3	1-3mm	1	0,020	+3	+3	Light (Mb Flat)	Chipped	CH
3	LDD_025V	S166	VK3	1-3mm	1	0,035	+5	+5	Light (Clivage)	Chipped	1
3	LDD_025V	S173	VK3	1-3mm	1	0,275	+7	+7	Clivage	Chipped	0
3	LDD_028V	S196	VK2	1-3mm	1	0,060	+5	+5	Light (Cliv)	Chipped	CH
3	LDD_028V	S198	VK2	1-3mm	1	0,085	+7	+7	Mb 2	Chipped	0

TABLE 36: BREAKAGE TABLES – CHIPPED (PART B)

4 BREAKAGE AND IMPACT – LIGHT BREAKAGE

Dispatch	Hole ID	Sample	Material Type	Size	Stones	Carats	Sieve Size	Sale Size	Price Point	RDF Breakage Category	PJL Breakage Category
1	LDD_020V	S038	VK3	3-8mm	1	0,425	+11	+11	Clivage White	Lightly Broken	CH
1	LDD_033V	S015	VK2	1-3mm	1	0,055	+5	+5	Light	Lightly Broken	0
1	LDD_033V	S015	VK2	1-3mm	1	0,025	+3	+3	Dark	Lightly Broken	0
1	LDD_033V	S027	VK2	1-3mm	1	0,045	+3	+3	Gem Mb	Lightly Broken	2
1	LDD_033V	S028	VK2	1-3mm	1	0,185	+9	+9	Gem Mb High	Lightly Broken	1
1	LDD_033V	S028	VK2	1-3mm	1	0,050	+5	+5	Dark	Lightly Broken	0
1	LDD_033V	S028	VK2	1-3mm	1	0,045	+5	+5	Light	Lightly Broken	2
1	LDD_033V	S029	VK2	1-3mm	1	0,020	+3	+3	Light	Lightly Broken	0
2	LDD_018V	S074	VK2	1-3mm	1	0,015	+3	+3	Light	Lightly Broken	1
2	LDD_018V	S077	VK2	1-3mm	1	0,135	+9	+9	Mb Gem High	Lightly Broken	2
2	LDD_018V	S081	VK2	1-3mm	1	0,070	+5	+5	Light	Lightly Broken	2
2	LDD_020V	S046	VK3	1-3mm	1	0,050	+5	+5	Light	Lightly Broken	0
2	LDD_020V	S052	VK3	1-3mm	1	0,120	+7	+7	Clivage White	Lightly Broken	4
2	LDD_020V	S052	VK3	1-3mm	1	0,080	+5	+5	Light	Lightly Broken	2
2	LDD_020V	S054	VK3	1-3mm	1	0,025	+3	+3	Light	Lightly Broken	2
2	LDD_020V	S056	VK3	1-3mm	1	0,050	+3	+3	Gem Mb	Lightly Broken	2
2	LDD_020V	S056	VK3	1-3mm	1	0,025	+3	+3	Light	Lightly Broken	2
2	LDD_020V	S056	VK3	1-3mm	1	0,020	+1	+1	Light	Lightly Broken	2
2	LDD_020V	S057	VK3	1-3mm	1	0,030	+5	+5	Light	Lightly Broken	1
2	LDD_020V	S060	VK3	1-3mm	1	0,065	+5	+5	Dark	Lightly Broken	3
2	LDD_020V	S061	VK3	1-3mm	1	0,100	+7	+7	Clivage White	Lightly Broken	1
2	LDD_021V	S065	VK3	1-3mm	1	0,120	+7	+7	Gem Mb	Lightly Broken	2
2	LDD_021V	S069	VK3	1-3mm	1	0,135	+9	+9	Clivage White	Lightly Broken	2
2	LDD_023V	S240	VK3	1-3mm	1	0,030	+3	+3	Dark	Lightly Broken	2
2	LDD_030V	S180	VK3	1-3mm	1	0,020	+3	+3	Light	Lightly Broken	0
2	LDD_033V	S014-S033_retreat	VK2	1-3mm	1	0,015	+1	+1	Light	Lightly Broken	1
3	LDD_018V	S093+S094	VK2	1-3mm	1	0,025	+3	+3	Light	Lightly Broken	1
3	LDD_018V	S093+S094	VK2	1-3mm	1	0,020	+5	+5	Light	Lightly Broken	2
3	LDD_022V	S117	VK3	1-3mm	1	0,035	+3	+3	Light	Lightly Broken	2
3	LDD_023V	S235	VK2	1-3mm	1	0,050	+5	+5	Light (Mb)	Lightly Broken	1
3	LDD_023V	S235	VK2	1-3mm	1	0,050	+5	+5	Light (Mb)	Lightly Broken	1
3	LDD_023V	S235	VK2	1-3mm	1	0,045	+5	+5	Light (Mb)	Lightly Broken	2
3	LDD_023V	S236	VK2	1-3mm	1	0,220	+9	+9	Clivage	Lightly Broken	0
3	LDD_023V	S241	VK3	1-3mm	1	0,130	+7	+7	Clivage Low/Rei Hi	Lightly Broken	Ch
3	LDD_024V	S211	VK3	1-3mm	1	0,040	+5	+5	Light (Mb)	Lightly Broken	2
3	LDD_030V	S186	VK2	1-3mm	1	0,015	+1	+1	Light (Cliv)	Lightly Broken	1
3	LDD_019V	S122	VK3	1-3mm	1	0,040	+5	+5	Light	Lightly Broken	CH

TABLE 37: BREAKAGE TABLES – LIGHT BREAKAGE

4 BREAKAGE AND IMPACT – HEAVY BREAKAGE AND FRAGMENTS

Dispatch	Hole ID	Sample	Material Type	Size	Stones	Carats	Sieve Size	Sale Size	Price Point	RDF Breakage Category	PJL Breakage Category
1	LDD_020V	S040	VK3	1-3mm	1	0,140	+9	+9	Gem Mb	Heavily Broken	1
1	LDD_033V	S028	VK2	3-8mm	1	0,200	+9	+9	Gem Mb High	Heavily Broken	3
2	LDD_018V	S084	VK2	1-3mm	1	0,070	+5	+5	Light	Heavily Broken	0
2	LDD_018V	S086	VK2	1-3mm	1	0,020	+3	+3	Light	Heavily Broken	0
2	LDD_020V	S053	VK3	1-3mm	1	0,025	+3	+3	Light	Heavily Broken	CH
2	LDD_020V	S053	VK3	1-3mm	1	0,020	+3	+3	Light	Heavily Broken	4
2	LDD_020V	S053	VK3	1-3mm	1	0,020	+1	+1	Light	Heavily Broken	4
2	LDD_020V	S057	VK3	1-3mm	1	0,020	+3	+3	Gem Mb	Heavily Broken	2
2	LDD_020V	S059	VK3	1-3mm	1	0,055	+5	+5	Gem Mb	Heavily Broken	1
2	LDD_021V	S071	VK3	1-3mm	1	0,070	+5	+5	Light	Heavily Broken	CH
3	LDD_023V	S235	VK2	1-3mm	1	0,055	+5	+5	Light (Mb)	Heavily Broken	4
3	LDD_023V	S237	VK2	1-3mm	1	0,030	+3	+3	Light (Mb)	Heavily Broken	3
3	LDD_023V	S242	VK3	1-3mm	1	0,070	+7	+7	Clivage	Heavily Broken	3
3	LDD_023V	S242	VK3	1-3mm	1	0,050	+5	+5	Light (Clivage)	Heavily Broken	2
3	LDD_025V	S176	VK3	1-3mm	1	0,015	+3	+3	Light	Heavily Broken	4
3	NA	Lab sample_VK3	VK3	1-3mm	1	0,040	+5	+5	Light	Heavily Broken	2
1	LDD_026V	S013	VK3	1-3mm	1	0,035	+5	+5	Light	Fragment	CH
1	LDD_033V	S028	VK2	1-3mm	1	0,055	+5	+5	Light	Fragment	4
2	LDD_020V	S044	VK3	1-3mm	1	0,025	+3	+3	Light	Fragment	4
2	LDD_020V	S057	VK3	1-3mm	1	0,010	+1	+1	Dark	Fragment	1
2	LDD_021V	S065	VK3	1-3mm	1	0,200	+9	+9	Mb Gem High	Fragment	1
2	LDD_021V	S065	VK3	1-3mm	1	0,160	+9	+9	Mb Gem High	Fragment	2
2	LDD_021V	S065	VK3	1-3mm	1	0,120	+7	+7	Gem Mb	Fragment	2
2	LDD_021V	S065	VK3	1-3mm	1	0,040	+5	+5	Gem Mb	Fragment	3
2	LDD_026V	S001-S013_retreat	VK3	1-3mm	1	0,010	+1	+1	Dark	Fragment	CH
3	LDD_025V	S176	VK3	1-3mm	1	0,005	-1	NA	"Dust"	NA	0
					Stones	Carats					
					502	77,940					

TABLE 38: BREAKAGE TABLES – HEAVY BREAKAGE AND FRAGMENTS

The Drilling programme was very well managed as the Breakage Index for these LDD Samples at 12.35% is very low compared to the international average. The author has seen LDD sample programmes where the Breakage Index exceeded 30%.

The Project Due Diligence as seen with the presentation, packing, sealing, sample descriptors and detail was world-class. The diamonds were properly cleaned and the facilities at Hennig were top-class; including the assistance and administrative back-up provided by Drs De Wit and Jeffcoate.

4 BREAKAGE AND IMPACT – SUMMARY OF RESULTS

TSODILO RESOURCES			
BREAKAGE INDEX CALCULATION TABLE			
BREAKAGE CATEGORY	STONES	% PER CATEGORY	BREAKAGE INDEX
UNBROKEN	352	70,12%	87,65%
CHIPPED	88	17,53%	
LIGHT BREAKAGE	37	7,37%	12,35%
HEAVY BREAKAGE	16	3,19%	
FRAGMENT	9	1,79%	
TOTAL	502	100,00%	100,00%

TABLE 39: BREAKAGE RESULTS SUMMARY



IMAGE 7: A CIRCULAR IMPACT NOTED ON A DODEC IN THE HISTORICAL SAMPLE

TSODILO RESOURCES LDD SAMPLES REPORT – DECEMBER 2018

4 BREAKAGE AND IMPACT SUMMARY PER LDD SAMPLE

TSODILO RESOURCES													
LDD SAMPLES BREAKAGE AND IMPACT SUMMARY													
SAMPLE	STONES	CARATS	\$ PER CARAT	SAMPLE \$ TOTAL	STONES	UNBROKEN	CHIPPED	LIGHTLY BROKEN	HEAVILY BROKEN	FRAGMENT	IMPACT	BREAKAGE INDEX	
LDD_018V	27	4,225	\$ 108,27	\$ 457,45	27	16	4	5	2	0	1	7	25,93%
LDD_019V	41	9,15	\$ 150,85	\$ 1 380,25	41	30	10	1	0	0	2	1	2,44%
LDD_020V	78	12,365	\$ 201,49	\$ 2 491,37	78	48	11	11	6	2	2	19	24,36%
LDD_021V	39	5,315	\$ 204,41	\$ 1 086,45	39	27	5	2	1	4	1	7	17,95%
LDD_022V	15	1,925	\$ 81,89	\$ 157,64	15	13	1	1	0	0	0	1	6,67%
LDD_023V	55	6,635	\$ 129,18	\$ 857,11	55	40	5	6	4	0	2	10	18,18%
LDD_024V	48	7,19	\$ 150,21	\$ 1 080,04	48	37	10	1	0	0	2	1	2,08%
LDD_025V	56	8,185	\$ 163,41	\$ 1 337,48	56	44	11	0	1	0	2	1	1,79%
LDD_026V	18	2,325	\$ 162,78	\$ 378,47	18	12	4	0	0	2	0	2	11,11%
LDD_027V	2	0,115	\$ 65,00	\$ 7,48	2	1	1	0	0	0	0	0	0,00%
LDD_028V	40	5,945	\$ 143,62	\$ 853,83	40	28	12	0	0	0	1	0	0,00%
LDD_030V	14	1,655	\$ 99,49	\$ 164,66	14	11	1	2	0	0	0	2	14,29%
LDD_032V	9	2,785	\$ 416,13	\$ 1 158,93	9	8	1	0	0	0	0	0	0,00%
LDD_033V	57	9,935	\$ 237,01	\$ 2 354,68	57	37	10	8	1	1	1	10	17,54%
LAB VK2/3	3	0,190	\$ 73,42	\$ 13,95	3	0	2	0	1	0	1	1	33,33%
TOTAL	502	77,940	\$ 176,80	\$ 13 779,75	502	352	88	37	16	9	15	62	12,35%
SAMPLE	STONES	CARATS	\$ PER CARAT	SAMPLE \$ TOTAL	STONES	70,12%	17,53%	7,37%	3,19%	1,79%	2,99%	BREAKAGE INDEX PER SAMPLE	
						BREAKAGE INDEX	12,35%				IMPACT		

TABLE 40: BREAKAGE AND IMPACT RESULTS SUMMARY PER SAMPLE

TSODILO RESOURCES LDD SAMPLES REPORT – DECEMBER 2018

4 BREAKAGE AND IMPACT SUMMARY PER LDD SAMPLE

Dispatch	Hole ID	Sample	Material Type	Size	Stones	Carats	Sieve Size	Sale Size	Price Point	\$ Per Carat	RDF Breakage Category	Comments
3	LDD_018V	S095+S096	VK2	1-3mm	1	0,095	+5	+5	Light	\$ 65,00	Chipped	IMPACT
3	LDD_019V	S142-S143	VK3	1-3mm	1	0,065	+5	+5	Light	\$ 65,00	Chipped	IMPACT
3	LDD_019V	S142-S143	VK3	1-3mm	1	0,065	+5	+5	Light	\$ 65,00	Chipped	IMPACT
2	LDD_020V	S052	VK3	1-3mm	1	0,170	+7	+7	Mb	\$ 74,00	Chipped	HEAVY IMPACT
1	LDD_020V	S043	VK3	3-8mm	1	0,685	+12	3 Grainer	Clivage High	\$ 130,00	Unbroken	HEAVY IMPACT - VALUE LOSS
2	LDD_021V	S067	VKxxx	1-3mm	1	0,060	+5	+5	Light	\$ 20,00	Unbroken	HEAVY IMPACT - VALUE LOSS
3	LDD_023V	S241	VK3	1-3mm	1	0,130	+7	+7	Clivage Low/ Rej Hi	\$ 12,00	Light	IMPACT
3	LDD_023V	S242	VK3	1-3mm	1	0,110	+7	+7	Clivage	\$ 60,00	Chip	IMPACT
3	LDD_024V	S207	VK3	1-3mm	1	0,020	+3	+3	Light (Mb Flat)	\$ 35,00	Chipped	IMPACT
3	LDD_024V	S208	VK3	1-3mm	1	0,110	+7	+7	Clivage	\$ 60,00	Chipped	IMPACT
3	LDD_025V	S166	VK3	1-3mm	1	0,035	+5	+5	Light (Clivage)	\$ 50,00	Chipped	IMPACT TO EDGE
3	LDD_025V	S173	VK3	1-3mm	1	0,275	+7	+7	Clivage	\$ 40,00	Chipped	IMPACT
3	LDD_028V	S196	VK2	1-3mm	1	0,060	+5	+5	Light (Cliv)	\$ 40,00	Chipped	IMPACT
1	LDD_033V	LDD_033V_REAM	VK2	3-8mm	1	0,785	+13	3 Grainer	Clivage High	\$ 130,00	Unbroken	HEAVY IMPACT - VALUE LOSS
3	NA	Lab sample_VK2	VK2	1-3mm	1	0,070	+5	+5	Light	\$ 65,00	Chipped	IMPACT
					15	2,735						15 IMPACTS

TABLE 41: BREAKAGE AND IMPACT RESULTS SUMMARY PER SAMPLE

4 BREAKAGE AND IMPACT – IMPACT PER LDD SAMPLE

Impacts from the drilling were noted in the following samples:

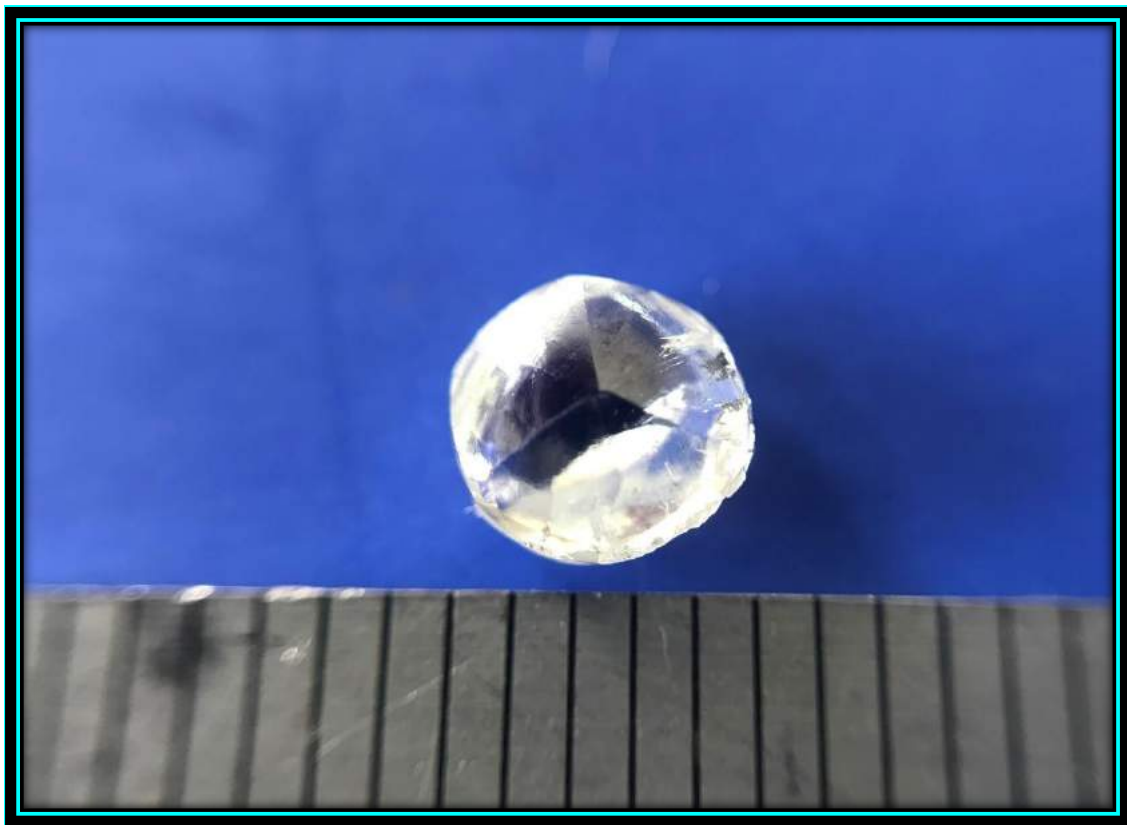
LDD020V: Heavy impact noted on a +7 stone in sample S052 with “scarring”

LDD020V: Very Heavy impact noted on a 0.68 Carat stone in sample S043 which forced cracks into the stone with value loss as the stone was downgraded from Gem Makeable to Clivage

LDD020V: Very Heavy impact noted on a 0.17 Carat stone in sample S043 which forced a crack into the side of the with no value loss – stays in the Makeable

LDD021V: Impact noted in S067 on a +5 stone which moved from Gem Makeable to Near Gem Light

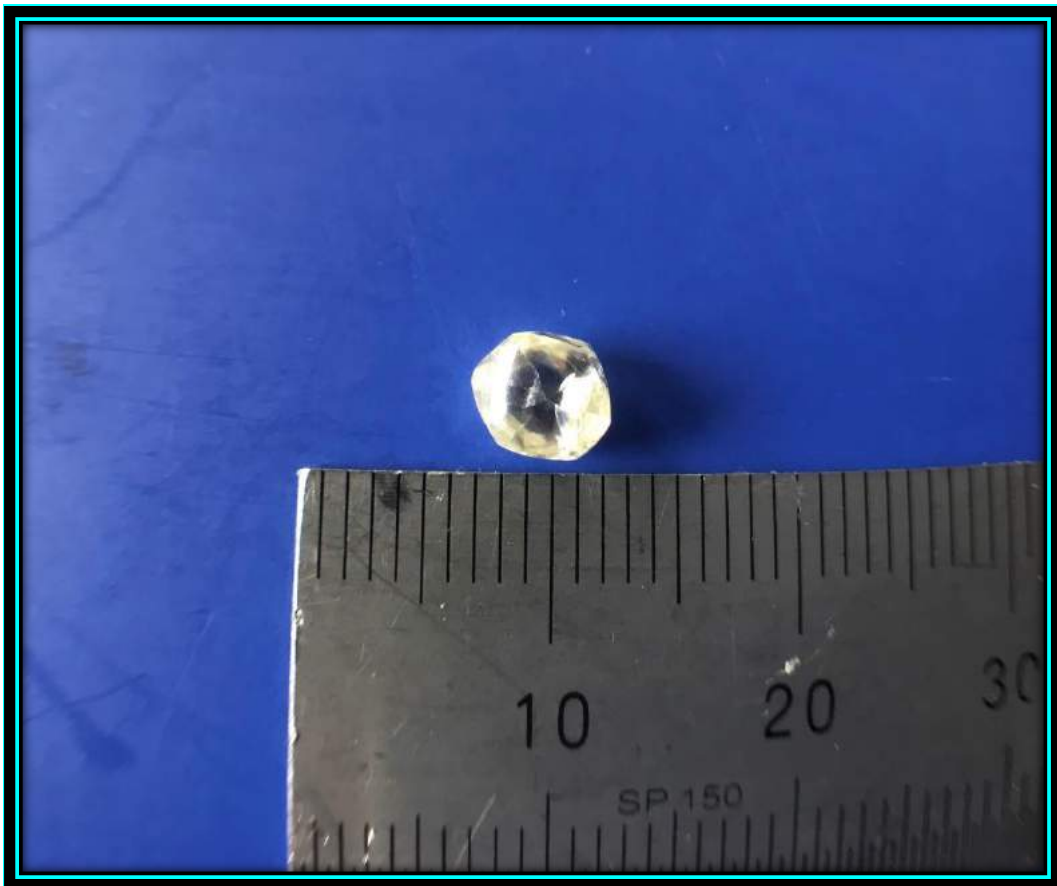
LDD033V: Very Heavy impact noted on a 0.67 carat stone in the Ream Sample which forced cracks into the stone with value loss as the stone was downgraded from Gem Makeable to Clivage.



**IMAGE 8: A 0.646 CARAT ROUNDED DODEC MACCLE IN THE S161 – LDD025V
ONE OF THE FEW STONES WITH YELLOW FLUORESCENCE**

4 BREAKAGE AND IMPACT – NOTES ON BREAKAGE PER SIZE

- ❖ Of the larger sizes above +9; there are only 17 stones of the 502 total that have been Chipped – stones above quarter carat (17 out of 88 stones)
- ❖ Of the larger sizes above +9; there are only 9 stones of the 502 total that have been Broken – stones above quarter carat (9 out of 62 stones)
- ❖ Of the larger sizes above +9; there are only 2 stones of the 502 total that have been damaged by Impacts – stones above quarter carat (2 out of 15 impacted stones)
- ❖ 352 stones – 70.12% from the 502 total are classified as Unbroken
- ❖ 88 stones – 17.53% from the 502 total are classified as Chipped
- ❖ 37 stones – 7.37% from the 502 total are classified as Lightly Broken
- ❖ 16 stones – 3.19% from the 502 total are classified as Heavily Broken
- ❖ 9 stones – 1.79% from the 502 total are classified as Fragments
- ❖ 15 stones – 2.99% from the 502 total are classified with Impact damage
- ❖ Therefore; the Breakage Index for the LDD Sampling programme to date is **12.35%**.



**IMAGE 9: A 0.920 CARAT ROUNDED YELLOWISH DODEC IN THE S143 – LDD019V
ONE OF THE FEW STONES WITH YELLOW COLOUR (K)**

5 DIAMOND CHARACTERISTICS AND TYPE IIa

The parcel is dominated by the white diamonds, many of which are G colour and higher. There is a very small population of Browns; very few of which are medium or darker brown. There is also a very small Yellow population which like the Browns are lost amongst the white diamonds.

The shapes are dominated by Dodecahedra with only a few Octahedra noted in the very small sizes. No obvious cubes were noted and the few triangular maccles noted are mostly in the very small sizes. In terms of quality; the mostly white Gem population accounts for most of the total carats, followed by the Near Gem Clivage qualities and a small population of Rejections. No Boart quality diamonds were noted in the samples. A small percentage of these diamonds have a fine green radiation coating or staining which is only nanometers thick and is removed during polishing.

Of interest is the range of qualities in the white Dodecahedra; which are either very clean or lightly peppered throughout, with very few lightly spotted stones. This production is very similar to the *Karreevlei* diamond production in South Africa; which has a high average price of over \$300 per carat due to the abundance of white Dodecahedra. The BK16 is unlike most of the Botswana Kimberlitic goods due to a small population of lower quality Clivage and Rejection goods, minimum darker browns as well as no Boart qualities.

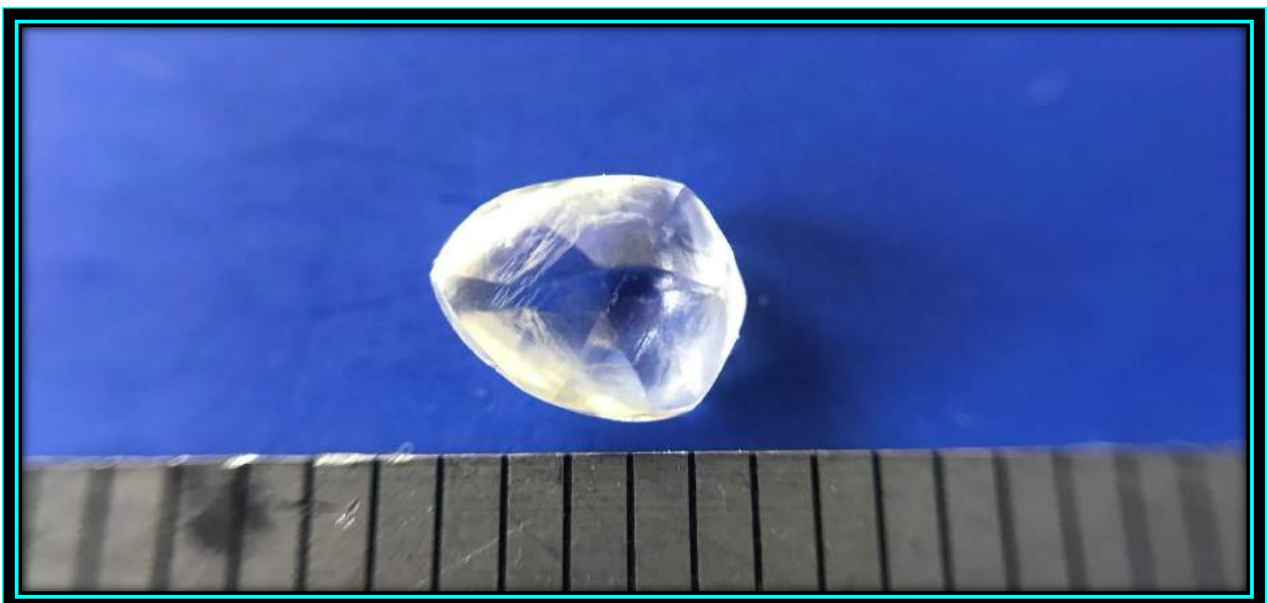


IMAGE 10: TYPICAL BK16 IRREGULAR DODEC AT 0.455 CARAT - S127 – LDD019V

5 DIAMOND CHARACTERISTICS AND TYPE IIa

While none of the larger stones above 3 Grainer are Type IIa, the largest is a +11 weighing 0.55 carats. They are mainly in the smaller -11 sizes. These stones were confirmed as Type IIa using the *Yehuda Colorimeter*.

Hole ID	Sample	Material Type	Carats	Sieve Size	Price Point	\$ Per Carat	RDF Breakage Category	Type IIa	Yehuda Reading
LDD_019V	S137	VK3	0,085	+5	Light (MB)	\$ 65,00	Unbroken	Type IIa - D Colour	Type IIa White
LDD_019V	S144	VK3	0,040	+5	Light (MB)	\$ 65,00	Chipped	Type IIa - D Colour	Type IIa White
LDD_020V	S055	VK3	0,550	+12	Rejection	\$ 12,00	Chipped	Type IIa - D Colour	Type IIa Mixed
LDD_020V	S055	VK3	0,410	+11	Clivage White	\$ 85,00	Chipped	Type IIa - D Colour	Type IIa Mixed
LDD_020V	S050	VK3	0,065	+7	Gem Mb	\$ 115,00	Unbroken	Type IIa - D Colour	Type IIa White
LDD_022V	S110	VK3	0,215	+9	Clivage	\$ 60,00	Unbroken	Type IIa Brown	Type IIa Brown
LDD_022V	S111_R	VK3	0,250	+9	Clivage Mb TLB	\$ 50,00	Unbroken	Type IIa Top Light Brown	Type IIa Brown
LDD_026V	S009	VK3	0,090	+7	Clivage White	\$ 12,00	Unbroken	Type IIa - D Colour	Type IIa Mixed

TABLE 42: TYPE IIa DIAMONDS AS MEASURED BY THE YEHUDA

The majority of the diamonds (248 +7 and larger stones) were tested on the Yehuda and the Ultra Violet light source to check for fluorescence and it appears that most of those tested had Light blue fluorescence; with only 3 strongly fluorescent and 4 medium fluorescence stones. This is quite unusual in most productions world-wide.

TSODILO RESOURCES					
FLUORESCENCE					
NONE	FAINT	LIGHT	MEDIUM	STRONG	TOTAL
33	90	118	4	3	248
13,31%	36,29%	47,58%	1,61%	1,21%	100,00%
49,60%		47,58%	2,82%		100,00%
NO FLUORSCENCE - NO IMPACT ON PRICE		VERY SMALL IMPACT ON PRICE	DEFINITE IMPACT ON PRICE		
THESE 248 STONES (+7 SIEVE AND LARGER) RESULTS ARE BASED ON THE FLUORESCENT MEASUREMENTS OF THE YEHUDA COLORIMETER.					

TABLE 43: FLUORESENECE LEVELS OF THE +7 AND LARGER DIAMONDS

6 TAILINGS SAMPLE

37 tons of historic BK16 tailings yielded 7 diamonds weighing 1.34 carats. None of the 7 diamonds were broken and the colour and quality mirrors the LDD samples.

B16 TAILINGS SAMPLE								
SAMPLE NUMBER	DIAMOND SIZE	STONES	CARATS	BREAKAGE CATEGORY	SALES SIZE	PRICE POINT	\$ PER CARAT	TOTAL \$
B16 TAILINGS SAMPLE	+13	1	0.80	Unbroken	3 Grainer	Clivage White	\$ 130.00	\$ 104.00
	+9	1	0.21	Unbroken	+9	Gem Mb High	\$ 165.00	\$ 34.65
	+7	1	0.11	Unbroken	+7	Gem Mb	\$ 115.00	\$ 12.65
	+7	1	0.09	Unbroken	+7	Clivage	\$ 40.00	\$ 3.60
	+5	1	0.06	Unbroken	+5	Light	\$ 20.00	\$ 1.20
	+5	1	0.06	Unbroken	+5	Gem Mb	\$ 95.00	\$ 5.70
	+1	1	0.01	Unbroken	+1	Light	\$ 10.00	\$ 0.10
		7	1.34				\$ 120.82	\$ 161.90
		STONES	CARATS				\$ PER CARAT	TOTAL \$

TABLE 44: VALUATION AND BREAKAGE SUMMARY FOR THE TAILINGS SAMPLE

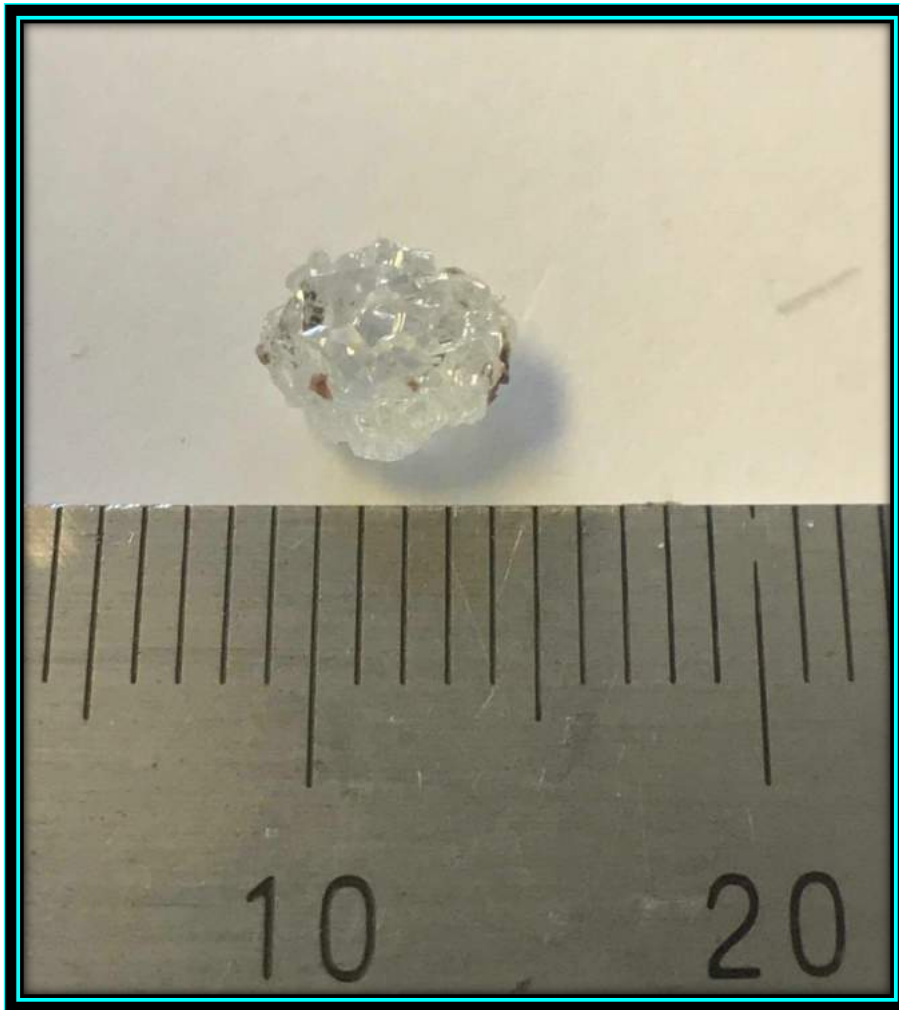


IMAGE 11: A WHITE 0.80 CARAT HIGHLY IRREGULAR MAKEABLE FROM THE TAILINGS SAMPLE

7 HISTORICAL SAMPLE



IMAGE 12: THE HISTORICAL SAMPLE WITH OBVIOUS SIMILARITIES TO THE LDD DIAMONDS

TSODILO RESOURCES				
1999/2000 HISTORICAL SAMPLES VALUATION				
SAMPLE YEAR	PACKET	CARATS	\$ PER CARAT	SAMPLE \$ TOTAL
1999	1	3,405	\$ 169,84	\$ 578,30
1999	2	0,600	\$ 46,47	\$ 27,88
1999	3	0,505	\$ 54,85	\$ 27,70
1999	4	0,035	\$ 65,14	\$ 2,28
1999	5	0,415	\$ 46,51	\$ 19,30
2000	1	12,045	\$ 184,45	\$ 2 221,76
2000	2	0,272	\$ 64,23	\$ 17,47
2000	3	1,010	\$ 65,99	\$ 66,65
2000	4	4,075	\$ 182,54	\$ 743,85
2000	5	0,405	\$ 79,95	\$ 32,38
TOTAL	10	22,767	\$ 164,17	\$ 3 737,57
SAMPLE	STONES	CARATS	\$ PER CARAT	SAMPLE \$ TOTAL

TABLE 45: VALUATION SUMMARY FOR THE HISTORICAL TAILINGS SAMPLE

TSODILO RESOURCES LDD SAMPLES REPORT – DECEMBER 2018

7 HISTORICAL SAMPLE - DETAIL

Sample Number	Stones	Weight	Diamond Sieve	Sale Size	Price Point	\$ Per Carat	Total \$	Ray Breakage Category	Comments
1999 Packet 1	1	0,945	+13	4 Grainer	Low Clivage	\$ 110,00	\$ 103,95	Unbroken	Dodec, Nice large stone some obvious inclusions
1999 Packet 1	1	0,875	+12	3 Grainer	Mb Gem High 2	\$ 355,00	\$ 310,63	Unbroken	Dodec, has impact on it, Nice clean stone clear. (Impact)
1999 Packet 1	1	0,515	+12	+11	Mb Spot	\$ 160,00	\$ 82,40	Chipped	Maccle, Broken stone, clear. (Impact Hackly)
1999 Packet 1	1	0,310	+9	+9	Mb Spot	\$ 80,00	\$ 24,80	Lightly Broken	Maccle, Clean broken stone
1999 Packet 1	1	0,150	+9	+9	Mb Spot	\$ 80,00	\$ 12,00	Lightly Broken	Dodec, Clean broken stone
1999 Packet 1	1	0,135	+7	+7	Mb Gem High	\$ 110,00	\$ 14,85	Unbroken	dodec, nice oval stone
1999 Packet 1	1	0,130	+7	+7	Clivage	\$ 60,00	\$ 7,80	Lightly Broken	maccle, elongate stone
1999 Packet 1	1	0,085	+7	+7	Mb Flat	\$ 90,00	\$ 7,65	Lightly Broken	small flat round stone
1999 Packet 1	1	0,085	+5	+5	Light (Mb)	\$ 65,00	\$ 5,53	Unbroken	dodec, flat chip
1999 Packet 1	1	0,080	+5	+5	Light (Mb)	\$ 65,00	\$ 5,20	Unbroken	Flat Dodec, Nice small flattened oval
1999 Packet 1	1	0,060	+5	+5	Light (Cliv)	\$ 35,00	\$ 2,10	Heavy Broken	small flat
1999 Packet 1	1	0,035	+5	+5	Mb Flat IIa	\$ 40,00	\$ 1,40	Fragment	small flat chip, Type IIa fragment
1999 Packet 2	1	0,565	+12	+11	Clivage Low	\$ 45,00	\$ 25,43	Unbroken	Dodec, spotted
1999 Packet 2	1	0,035	+5	+5	Light (Mb)	\$ 70,00	\$ 2,45	Chipped	very small flat chip, Type 11a chipped - impact
1999 Packet 3	1	0,160	+7	+7	Mb 2	\$ 90,00	\$ 14,40	Lightly Broken	flat dodec, irregular clean very white
1999 Packet 3	1	0,065	+5	+5	Light (Clivage)	\$ 35,00	\$ 2,28	Chipped	1/2 dodec, small very clean. (Impact)
1999 Packet 3	1	0,070	+5	+5	Light (Mb)	\$ 65,00	\$ 4,55	Unbroken	dodec, small oval minor inclusions
1999 Packet 3	1	0,050	+5	+5	Light (Mb)	\$ 65,00	\$ 3,25	Unbroken	small clean
1999 Packet 3	1	0,065	+5	+5	Light (Cliv)	\$ 35,00	\$ 2,28	Chipped	1/2 dodec, small broken clean. (Impact)
1999 Packet 3	1	0,055	+5	+5	Dark (Rej)	\$ 10,00	\$ 0,55	Unbroken	irregular dodec
1999 Packet 3	1	0,040	+5	+5	Dark (Rej)	\$ 10,00	\$ 0,40	Chipped	irregular dodec
1999 Packet 4	1	0,035	+5	+5	Mb (Light)	\$ 65,00	\$ 2,28	Unbroken	dodec, small clean
1999 Packet 5	1	0,205	+9	+9	Clivage	\$ 80,00	\$ 16,40	Unbroken	dodec, elongate oval, minor inclusions
1999 Packet 5	1	0,160	+5	+5	Dark (Black Z)	\$ 15,00	\$ 2,40	Unbroken	dodec, small oval, minor inclusions
1999 Packet 5	1	0,050	+5	+5	Dark (Cliv)	\$ 10,00	\$ 0,50	Unbroken	small slightly flat minor inclusions

TABLE 46: VALUATION AND BREAKAGE SUMMARY FOR THE HISTORICAL TAILINGS SAMPLE – PART A

TSODILO RESOURCES LDD SAMPLES REPORT – DECEMBER 2018

7 HISTORICAL SAMPLE-DETAIL

2000 Packet 1	1	1,115	+17	4 Grainer	Mb Spot	\$ 380,00	\$ 423,70	Unbroken	Irregular Dodec
2000 Packet 1	1	0,980	+15	4 Grainer	Z Spot	\$ 478,00	\$ 468,44	Unbroken	Dodec
2000 Packet 1	1	0,885	+13	3 Grainer	Mb Gem High	\$ 365,00	\$ 323,03	Unbroken	Dodec macle
2000 Packet 1	1	0,880	+13	3 Grainer	Mb Spot High	\$ 240,00	\$ 211,20	Unbroken	Macle
2000 Packet 1		0,410	+11	+11	Fancy Shape Mb	\$ 198,00	\$ 81,18		
2000 Packet 1		1,405	+11	+11	Mb Spot	\$ 125,00	\$ 175,63		
2000 Packet 1		1,635	+11	+11	Clivage High	\$ 85,00	\$ 138,98		
2000 Packet 1		0,860	+11	+11	Clivage Low	\$ 45,00	\$ 38,70		
2000 Packet 1	7		+11				\$ -	Unbroken	
2000 Packet 1	2		+11				\$ -	Chipped	
2000 Packet 1	1		+11				\$ -	Lightly Broken	
2000 Packet 1		0,460	+9	+9	Z Gem High	\$ 220,00	\$ 101,20		Dodecs
2000 Packet 1		0,205	+9	+9	Mb Spot	\$ 105,00	\$ 21,53		Irregular Dodec
2000 Packet 1		0,105	+9	+9	Flats	\$ 120,00	\$ 12,60		
2000 Packet 1		0,380	+9	+9	Clivage	\$ 85,00	\$ 32,30		
2000 Packet 1		0,180	+9	+9	Black Z	\$ 98,00	\$ 17,64		Spots in Dodec
2000 Packet 1	7		+9				\$ -	Unbroken	
2000 Packet 1		0,470	+7	+7	Mb Gem High	\$ 110,00	\$ 51,70		
2000 Packet 1		0,325	+7	+7	Flats	\$ 85,00	\$ 27,63		
2000 Packet 1		0,025	+7	+7	Rejection	\$ 8,00	\$ 0,20		
2000 Packet 1		0,565	+7	+7	Clivage	\$ 60,00	\$ 33,90		
2000 Packet 1	8		+7				\$ -	Unbroken	
2000 Packet 1	3						\$ -	Chipped	
2000 Packet 1	1						\$ -	Lightly Broken	
2000 Packet 1		0,225	+5	+5	Light (Z)	\$ 85,00	\$ 19,13		
2000 Packet 1		0,490	+5	+5	Light (Mb)	\$ 65,00	\$ 31,85		
2000 Packet 1		0,285	+5	+5	Dark (Clivage)	\$ 10,00	\$ 2,85		Grey
2000 Packet 1	10						\$ -	Unbroken	
2000 Packet 1	3						\$ -	Chipped	
2000 Packet 1	1						\$ -	Lightly Broken	
2000 Packet 1	4	0,140	+3	+3	Light (Clivage)	\$ 55,00	\$ 7,70	Unbroken	
2000 Packet 1	1	0,020	+1	+1	Light (Mb)	\$ 35,00	\$ 0,70	Lightly Broken	

TABLE 47: VALUATION AND BREAKAGE SUMMARY FOR THE HISTORICAL TAILINGS SAMPLE – PART B

TSODILO RESOURCES LDD SAMPLES REPORT – DECEMBER 2018

7 HISTORICAL SAMPLE - DETAIL

2000 Packet 2	1	0,115	+5	+5	Light (Z)	\$ 65,00	\$ 7,48	Unbroken	
2000 Packet 2	1	0,007	+5	+5	Light (Clivage)	\$ 35,00	\$ 0,25	Unbroken	
2000 Packet 2	5	0,150	+3	+3	Light (Mb)	\$ 65,00	\$ 9,75		
2000 Packet 2	1		+3				\$ -	Lightly Broken	
2000 Packet 2	4		+3				\$ -	Unbroken	
2001 Packet 3	1	0,350	+11	+11	Clivage	\$ 85,00	\$ 29,75	Unbroken	Crack
2001 Packet 3	1	0,060	+5	+5	Light	\$ 65,00	\$ 3,90	Unbroken	Flat
2001 Packet 3	2	0,600	+3	+3	Light	\$ 55,00	\$ 33,00	Unbroken	
2001 Packet 4	1	1,685	+17	6 Grainer	Clivage Low	\$ 305,00	\$ 513,93	Unbroken	Irregular Dodec, spinel inclusions
2001 Packet 4	1	0,565	+12	+11	Z Spot Z	\$ 258,00	\$ 145,77	Unbroken	Light Piques
2001 Packet 4	1	0,320	+11	+11	Clivage High	\$ 85,00	\$ 27,20	Unbroken	
2001 Packet 4	1	0,215	+9	+9	Clivage High	\$ 60,00	\$ 12,90	Unbroken	
2001 Packet 4	1	0,175	+7	+7	Mb Gem 2	\$ 90,00	\$ 15,75	Unbroken	Irreg Dodec
2001 Packet 4	1	0,125	+7	+7	Clivage	\$ 60,00	\$ 7,50	Unbroken	
2001 Packet 4	5	0,430	+5				\$ -	Unbroken	
2001 Packet 4	1	0,045	+5				\$ -	Chipped	
2001 Packet 4		0,215	+5	+5	Light	\$ 65,00	\$ 13,98		
2001 Packet 4		0,215	+5	+5	Dark	\$ 10,00	\$ 2,15		
2001 Packet 4	2	0,085	+3	+3	Light	\$ 55,00	\$ 4,68	Unbroken	
2001 Packet 5	1	0,150	+7	+7	Mb Gem	\$ 110,00	\$ 16,50	Unbroken	Irreg Dodec clean
2002 Packet 5	1	0,140	+7	+7	Clivage Mb	\$ 60,00	\$ 8,40	Unbroken	
2003 Packet 5	2	0,115	+5	+5	Light	\$ 65,00	\$ 7,48	Unbroken	
		22,767				\$ 164,17	\$ 3 737,55		
		Carats				\$ per Carat	\$ Total		

TABLE 48: VALUATION AND BREAKAGE SUMMARY FOR THE HISTORICAL TAILINGS SAMPLE – PART C

TSODILO RESOURCES LDD SAMPLES REPORT – DECEMBER 2018

7 HISTORICAL SAMPLE - DETAIL

TSODILO RESOURCES													
HISTORICAL SAMPLES BREAKAGE AND IMPACT SUMMARY													
SAMPLE YEAR	PACKET	CARATS	\$ PER CARAT	SAMPLE \$ TOTAL	STONES	UNBROKEN	CHIPPED	LIGHTLY BROKEN	HEAVILY BROKEN	FRAGMENT	IMPACT	BREAKAGE INDEX	
1999	1	3,405	\$ 169,84	\$ 578,30	12	5	1	4	1	1	2	6	50,00%
1999	2	0,600	\$ 46,47	\$ 27,88	2	1	1	0	0	0	1	0	0,00%
1999	3	0,505	\$ 54,85	\$ 27,70	7	3	3	1	0	0	2	1	14,29%
1999	4	0,035	\$ 65,14	\$ 2,28	1	1	0	0	0	0	0	0	0,00%
1999	5	0,415	\$ 46,51	\$ 19,30	3	3	0	0	0	0	0	0	0,00%
2000	1	12,045	\$ 184,45	\$ 2 221,76	52	40	8	4	0	0	4	4	7,69%
2000	2	0,272	\$ 64,23	\$ 17,47	7	6	0	1	0	0	0	1	14,29%
2000	3	1,010	\$ 65,99	\$ 66,65	4	4	0	0	0	0	0	0	0,00%
2000	4	4,075	\$ 182,54	\$ 743,85	14	13	1	0	0	0	0	0	0,00%
2000	5	0,405	\$ 79,95	\$ 32,38	4	4	0	0	0	0	0	0	0,00%
TOTAL	10	22,767	\$ 164,17	\$ 3 737,57	106	80	14	10	1	1	9	12	11,32%
SAMPLE	STONES	CARATS	\$ PER CARAT	SAMPLE \$ TOTAL	STONES	75,47%	13,21%	9,43%	0,94%	0,94%	8,49%	BREAKAGE INDEX PER SAMPLE	
						BREAKAGE INDEX		11,32%			IMPACT		

TABLE 49: VALUATION AND BREAKAGE SUMMARY FOR THE HISTORICAL TAILINGS SAMPLE

8 SUMMARY

The BK16 goods are very attractive, mostly white goods with a mainly Dodecahedral population with many clean stones.

While this is a very small parcel statistically; the presence of such high colour clean high-yielding shapes bodes well for the future.

The Highest value stones noted are the following:

Hole ID	Sample	Material Type	Size	Carats	Sieve Size	Sale Size	Price Point	\$ Per Carat	Total \$	Comments
LDD_019V	S144	VK3	3-8mm	0,755	+13	3 Grainer	MB White 2	\$ 308,00	\$ 232,54	H+ Colour dodec macle
LDD_028V	S191	VK2	3-8mm	0,415	+11	+11	Gem Z High	\$ 320,00	\$ 132,80	Strong Octahedron shape Frosted H+
LDD_020V	S060	VK3	3-8mm	0,805	+13	3 Grainer	Mb Gem High	\$ 348,00	\$ 280,14	J- Irrgular Dodec
LDD_023V	S229	VKxxx	3-8mm	0,730	+13	3 Grainer	Mb Gem High	\$ 350,00	\$ 255,50	F+ colour irregular dodec
LDD_024V	S215	VK3	3-8mm	1,935	+17	8 Grainer	Col Clivage High	\$ 350,00	\$ 677,25	F+ Irregular Dodec Spotted
LDD_026V	S008	VK3	3-8mm	0,815	+13	3 Grainer	Mb Spot	\$ 375,00	\$ 305,63	G+ Colour; Irreg Dodec
LDD_025V	S164	VK3	3-8mm	0,745	+12	3 Grainer	Gem Z High	\$ 405,00	\$ 301,73	J colour dodec
LDD_033V	S021	VK2	3-8mm	0,705	+13	3 Grainer	Gem Mb	\$ 465,00	\$ 327,83	F+ Colour - Top Stone
LDD_033V	S024	VK2	3-8mm	1,375	+15	5 Grainer	Mb Gem High	\$ 705,00	\$ 969,38	F= Colour Top Stone
LDD_032V	S101	VK2	3-8mm	1,410	+15	6 Grainer	Z Spot	\$ 748,00	\$ 1 054,68	J colour Dodec
LDD_020V	S053	VK3	3-8mm	1,535	+17	6 Grainer	Z Spot	\$ 755,00	\$ 1 158,93	Z2 Crystal Octa
MOST EXPENSIVE STONES				11,225				\$ 507,47	\$ 5 696,39	

TABLE 50: HIGHEST VALUE DIAMONDS IN THE LDD SAMPLES

Only a few small octahedra were noted and no cubes were seen. There are a few triangular maccles, however, these are also mostly in the smaller sizes.

The population of lower quality Clivage and Rejection is very low compared to other Botswana Kimberlites.

No Boart quality diamonds were noted in the study. There are very few Yellow diamonds and the brown population of all shades is very low, especially the darker browns.

While none of the largest stones are Type IIa, there are a few stones in the smaller sizes which are mostly all White stones; with a few Light Browns.

While this is statistically a very small sample; the presence of such high colour clean high-yielding shapes bodes well for the future.

8 SUMMARY

The author is of the opinion that the BK16 goods could well be valued around \$ 300 per carat; based on all the indicators seen in these LDD samples; specifically with regard to colour, shape and quality. The fact that Type IIa diamonds are also present and the lack of weaker Rejection and Boart goods makes a big statement. However, a larger sample would be required to prove this.

While none of the larger stones above 3 Grainer are Type IIa, the largest is a +11 weighing 0.55 carats. They are mainly in the smaller -11 sizes. These stones were confirmed as Type IIa using the *Yehuda Colorimeter*.

248 stones in the +7 and larger were tested for fluorescence and it appears that most of those tested had *Light, Faint* or *No* blue fluorescence; with only 3 *Strong* fluorescence and 4 *Medium* fluorescence stones. This is quite unusual to have such a low amount of Medium and Strong fluorescence compared to most productions world-wide.

The BK16 tailings only yielded 7 diamonds weighing 1.34 carats and while it is a very small sample; the colour and quality mirrors the LDD and Historical samples.

The author viewed the Historical BK16 Sample as per Image 12; and noted the obvious similarities to the diamonds in the LDD samples. Of interest was the fact that minimum low qualities are present; which mirrors what was noted in the LDD study.

The Drilling programme was very well managed as the Breakage Index for these LDD Samples at 12.35% is very low compared to the international average. The author has seen LDD sample programmes where the Breakage Index exceeded 30%. While Fragments and impacts were found in the samples; the author feels that they constitute a lower than average compared to international drill programmes.

The Project Due Diligence as seen with the presentation, packing, sealing, sample descriptors and detail was world-class. The diamonds were properly cleaned and the facilities at Hennig were top-class; including the assistance and administrative back-up provided by Drs De Wit and Jeffcoate.

The BK16 goods are very attractive and would be highly saleable on the International market.